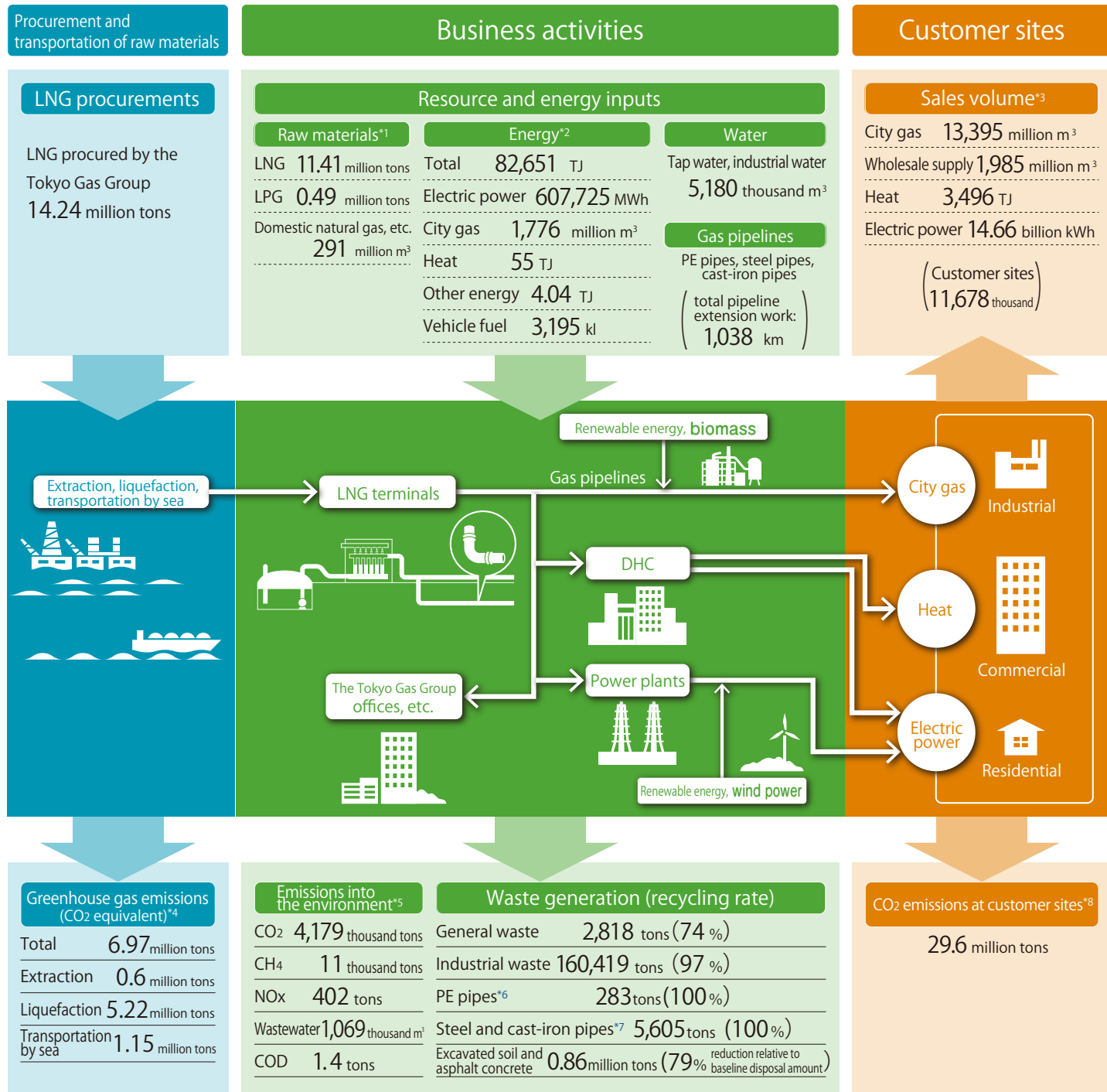


The Tokyo Gas Group Business Activities and Material Balance

Boundary : Tokyo Gas Co., Ltd. and 46 consolidated subsidiaries in Japan



*1 For city gas production by the Tokyo Gas Group.

*2 Energy usage by the Tokyo Gas Group excluding double-counting due to intra-group supply of heat and electricity.

*3 **City gas:** Volume of gas sales excluding supply to other gas utilities and sales for internal Group use.

Wholesale supply: Volume of gas supplied to other gas utilities.

Heat: Includes sales from LNG terminals as well as district heating and cooling centers and spot heat supply. Includes intra-group supply.

Electric power: Volume of sales of all electric power, including power purchased for business use from other companies and the market as well as Group power stations.

*4 Source: "Study of Life Cycle Greenhouse Gas Emissions of LNG and City Gas 13A"

(Proceedings of the annual meeting of Japan Society of Energy and Resources 35, pp. 23-26, 2016)

Production: 0.77; Liquefaction: 6.71; Transportation by sea: 1.48 g-CO₂/MJ, based on gross heating value

*5 **CO₂, CH₄, NO_x:** Excludes double-counting due to intra-group supply.

Volume of wastewater: Specified wastewater and domestic sewage.

*6,7 PE pipes, Steel and cast-iron pipes: Tokyo Gas on a non-consolidated basis.

*8 Gas sales volume multiplied by emission intensity.