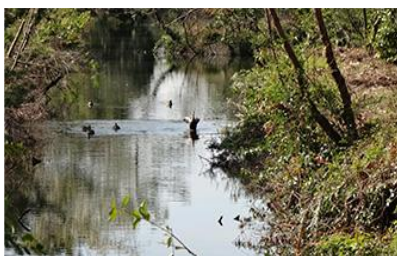


Komatsu

Green Procurement Guidelines



Procurement Division

KOMATSU

Komatsu Green Procurement Guidelines: What we would like to ask our business partners in the supply chain

(established on April.1st,2014)

On Komatsu Earth Environment Charter (June 2010 revision), we hold following as corporate basic principles;

- Contribution to realization of sustainable development
- Simultaneous realization of environmental and economic performance
- Observance of corporate social responsibility

Based on these principles, we promote Green procurement that prioritizes commodities and products with less environmental impact in our procurement activities, and we would like to ask our business partners in the supply chain to work on the following activities:

1. Comply with related laws and regulations concerning environment.
2. Build up environmental management system (EMS) through acquisition and maintenance of certification by 3rd party certification authority such as ISO14000 series and Eco-Stage.
3. Effort continuously to reduce environmental load for prevention of global warming and conservation of resources.

4. Manage appropriately and reduce the usage of potentially harmful chemical substances contained in your products.
5. In view point of compliance, not to use, in your products, the “conflict-minerals” produced from DRC and related countries.

Activities required to business partners		content of business with us				note	
		products parts	materials secondary materials	equipments construction	logistics		
Work on business partners' own business operations	Compliance with laws & regulations	○	○	○	○		
	Building up of EMS through acquisition and maintenance of certification by 3rd party certification authority	○*1	△*1	△	△	*1: compulsory requirement to Midori-kai members, promise of utmost effort to meet for non-Midori-kai suppliers	
	Improvement of environmental performance	Reduction of CO2 emission & usage of electricity	○	○	○	○	
		Effective use of resource (reduction of water consumption, recycle of waste, etc)	○	○	○	○	
	Thorough enforcement of environmental risk prevention	○	○	○	○		
Management of environmental load substances contained in parts, materials, packing materials we use	Confirmation of non-prohibited substances containing in products	○	○				
	Appropriate control, report and usage reduction of chemical substances contained in products	○	△				
	Buildin up system for management of chemical substances contained in products	○	△				
	Confirmation of no use of DRC origin conflict minerals in products, and building up system to control	○	○				

○ : target for all business partners

△ : target to specified business partners we define by case

These guidelines shall be revised as needed.