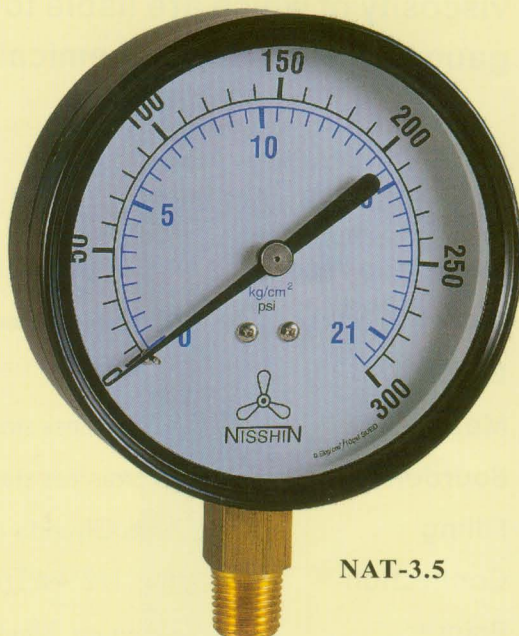
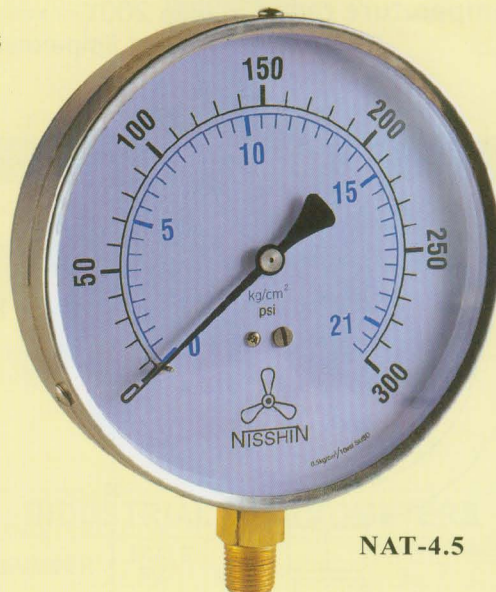
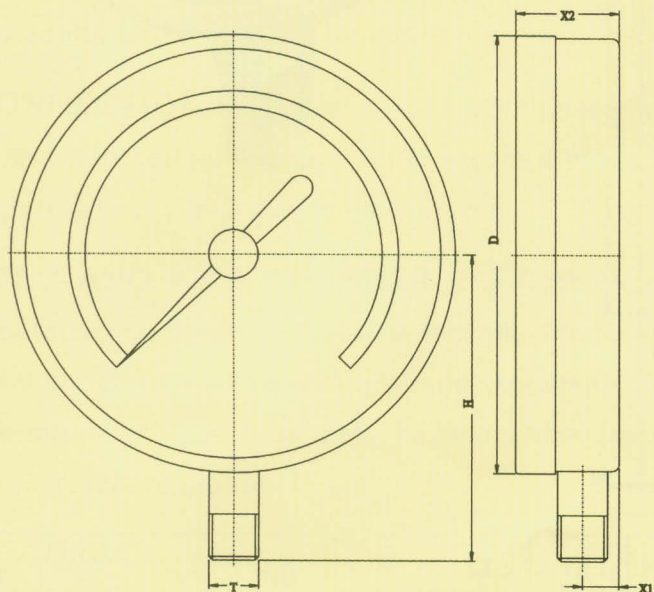


NAT PRESSURE GAUGE

The contractor gauge is designed for a wide variety of industrial application, but especially is suitable for heating and air condition systems. Stainless steel housing provides good corrosion resistance against in the atmosphere.

SPECIFICATIONS:

Type number	: NAT-3.5 , NAT-4.5
Dial size	: 3-1/2" , 4-1/2"
Measuring range	: 7kg/100psi , 11kg/160psi , 21kg/300psi
Casing & bezel	: 304 stainless steel(4-1/2"), Steel, black corrosion resistant(3-1/2")
Window	: Plastic(4-1/2") , Glass(3-1/2")
Dial	: Aluminum with recalibration adjustment screw
Movement	: Brass
Bourdon tube	: Brass
Connection	: 1/4" NPT/BSPT bottom, brass
Pointer	: Aluminum, black painted
Accuracy	: +/-1.0%
Working temperature	: -20°C to 60°C
Operating pressure	: 60% of full scale reading for fluctuating loads 75% full scale reading for static loads


NAT-3.5

NAT-4.5


SIZE (MM)	D	X1	X2	H	T	
					1/4"	3/8"
3-1/2" (95)	3.64 (93)	0.39 (10)	1.16 (30)	2.85 (73)	0.51 (13)	-
4-1/2" (125)	4.88 (124)	0.39 (10)	1.14 (29)	3.24 (87)	0.51 (13)	-