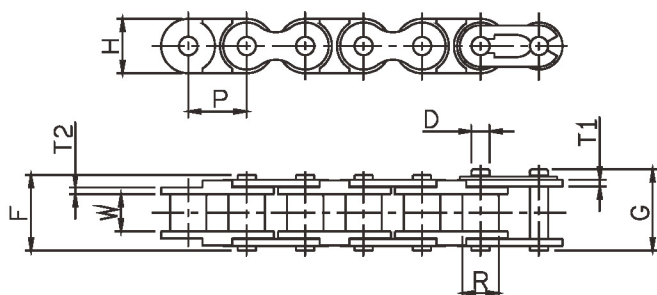


POLY-STEEL CHAIN

Poly-Steel (PC) chain is similar to ordinary roller chain, consists of SS304 outer-plate, SS304 pin but inner link (no roller) are out of engineering plastic which needs no lubrication . Ideal for clean working environment. FG Grade is using selected FDA approved material with color blue, which is applicable not only for normal application but also good fit for food industry.



| CHAIN NO. | Pitch | | Width | Roller | Plate | | | Pin | | | Allowable Load kgf(max) | Approx Weight kg/m |
|--------------|--------|--------|-------|--------|--------|-----------|------|--------|--------|------|-------------------------------|--------------------------|
| | P | | W | Dia | Height | Thickness | | Dia | Length | | | |
| | inch | mm | (min) | R(max) | H(max) | T1 | T2 | D(max) | F | G | | |
| SS25PC | 1/4" | 6.35 | 3.10 | 3.30 | 6.02 | 0.75 | 1.30 | 2.31 | 9.1 | 11.6 | 8 | 0.095 |
| SS35PC | 3/8" | 9.525 | 4.68 | 5.08 | 9.05 | 1.20 | 2.20 | 3.60 | 13.2 | 16.5 | 18 | 0.22 |
| SS40PC | 1/2" | 12.70 | 7.85 | 7.92 | 12.07 | 1.50 | 1.50 | 3.98 | 17.8 | 21.7 | 45 | 0.39 |
| SS50PC | 5/8" | 15.875 | 9.40 | 10.16 | 15.09 | 2.00 | 2.00 | 5.09 | 21.8 | 25.9 | 70 | 0.58 |
| SS60PC | 3/4" | 19.05 | 12.57 | 11.91 | 18.10 | 2.40 | 2.40 | 5.96 | 26.9 | 31.5 | 90 | 0.82 |
| SS06BPC | 0.375" | 9.525 | 5.72 | 6.35 | 8.60 | 1.00 | 1.30 | 3.28 | 13.5 | 16.8 | 20 | 0.22 |
| SS08BPC | 0.5" | 12.70 | 7.75 | 8.51 | 11.81 | 1.50 | 1.50 | 4.45 | 17.0 | 20.9 | 47 | 0.37 |
| SS10BPC | 0.625" | 15.875 | 9.65 | 10.16 | 14.73 | 1.50 | 1.50 | 5.08 | 19.6 | 23.7 | 54 | 0.51 |
| SS12BPC | 0.75" | 19.05 | 11.68 | 12.07 | 16.13 | 1.70 | 1.80 | 5.72 | 22.7 | 27.3 | 71 | 0.68 |

Food grade (FG). FDA approved blue plastic material is available at request.

Feature :

Maintenance free

MAXTOP PC chain made of engineering plastic material and SS304 free that does not required to be lubricated for rusty protection.

Better wearing life

Thanks to the lubricity of the engineering plastic, the chain wearing life is better than ordinary stainless steel chain.

Light weight

PC chain is 2/3 less weight than ordinary stainless steel chain which give it a benefit in easier-handling, installation and replacement.

Attachment adoptable

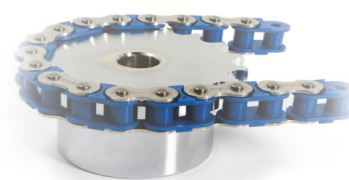
Standard attachments are available.

Food Industry adoptable

FG grade made of FDA approved engineering plastic which is applicable for wide range of application including food industry.

Less noise

Unlike ordinary metal chain usually create big noise when metal inner link make contact with sprocket, PC Chain inner link made of engineering plastic reduced noise problem.



Information :

- 1). A combination of engineering plastic inner links and electroplated steel outer links are also available.
- 2). Offset link are not available for PC chain. To be supplied in even number of links chain.
- 3). Standard sprocket can be adopted, but stainless steel or plastic sprocket are recommended for corrosion environment.
- 4). PC Chain use special connecting link which is different to standard stainless steel chain connecting link.
- 5). Ambient temperature range: -20°C ~ 80°C. Repeated use in steam or hot water, and exposure to strong acids or bases outside the PH range of 4~9 is prohibited.
- 6). When replacing stainless steel chain with PC chains, please check the chain tension. Chain tension should be less than the maximum allowable tension.
- 7). Maximum chain speed: less than 230ft/min.
- 8). Coefficient of sliding friction between chain and guide rail is 0.25.
- 9). Guide rail should support the bottom side of the links
- 10). Available in both WHITE and BLUE