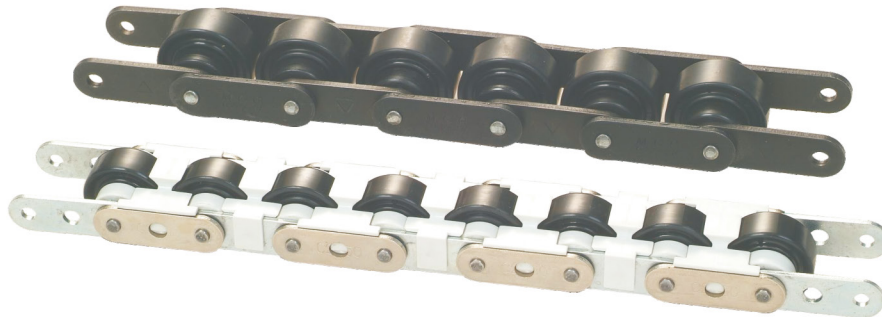


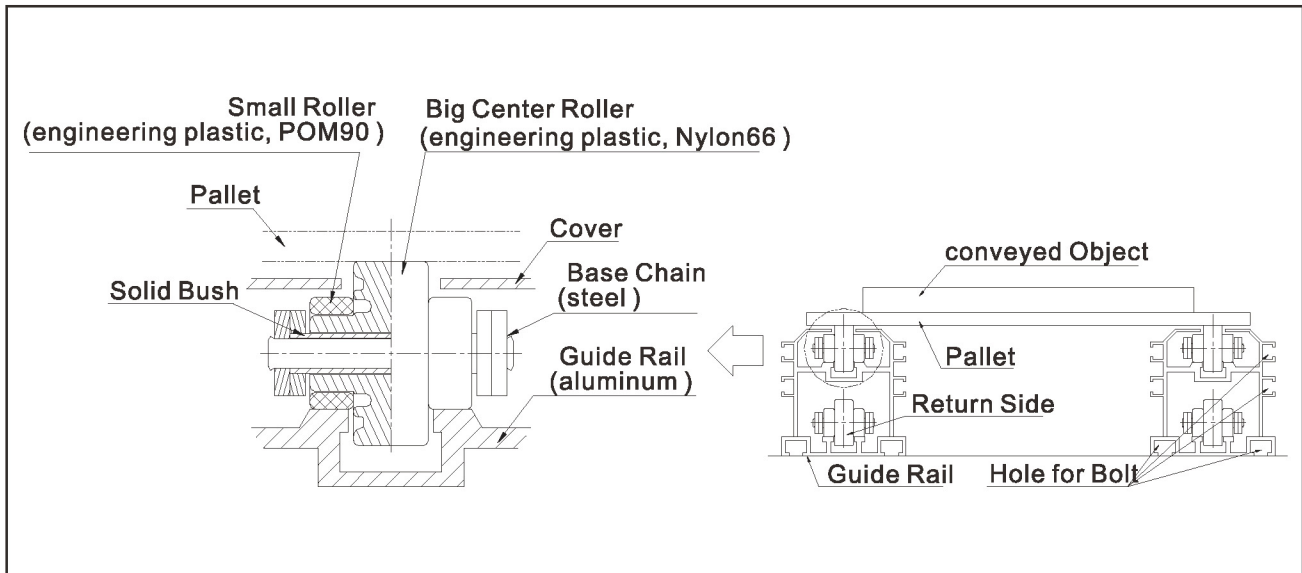
DOUBLE-PLUS CHAIN

DOUBLE PLUS Chain is widely used in electric or electronic assembly lines as well as in the auto parts, beverage, and medical equipment industries, where objects are conveyed on pallets.

DOUBLE PLUS Chain has big center rollers with small rollers on both sides. The difference in diameter of the two rollers causes the speed of the conveyed object could be 2.5~3.0 times the speed of the chain.



CONSTRUCTION

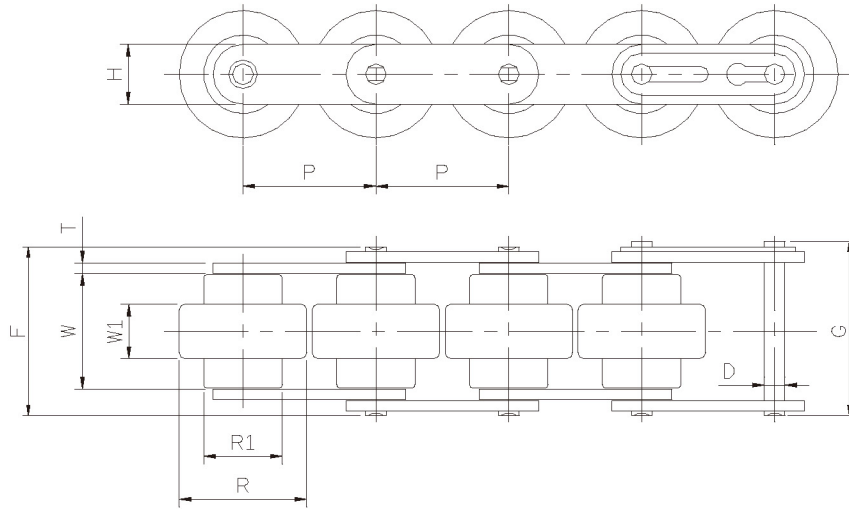


REGULAR type vs. SOLID type

- Supply 2 types of bush, Regular and Solid, for different needs.

REGULAR	SOLID(SBR-L)
Advantage <ul style="list-style-type: none"> • Low cost Disadvantage <ul style="list-style-type: none"> • Loose construction. 	Advantage <ul style="list-style-type: none"> • Long Solid bush is inlaid into side-plate; solid construction reduced chain wearing and noise during operation. • A bearing area shared by bush from pin is increased. • Bush is solid fixed; when Big Central Roller turning, a wear out mainly to be applied on bush and very slightly on pin.

DOUBLE-PLUS CHAIN



REGULAR CHAIN

CHAIN NO.	Pitch		Width	Roller			Plate		Pin			Average Ultimate Strength kgf	Approx Weight kg/m
	P		W	Height	Dia		Height	Thick.	Dia	Length			
	inch	mm	mm	W1	R	R1	H(max)	T	D(max)	F	G		
C2050-JDS ★	1.25"	31.75	27.40	12.60	30.60	19.05	15.0	2.00	5.09	39.2	40.7	3000	1.40
C2060H-TDS	1.50"	38.10	40.60	20.00	37.00	17.80	18.0	3.20	5.96	56.8	58.35	4200	2.10
C2060H-JDS	1.50"	38.10	33.10	15.50	36.50	22.50	18.0	3.20	5.96	49.3	50.85	4200	2.00

SOLID (SBR-L) CHAIN

CHAIN NO.	Pitch		Width	Roller			Plate		Pin			Average Ultimate Strength kgf	Approx Weight kg/m
	P		W	Height	Dia		Height	Thick.	Dia	Length			
	inch	mm	mm	W1	R	R1	H(max)	T	D(max)	F	G		
C2050 SBR-L JDS ★	1.25"	31.75	27.40	12.60	30.60	19.05	15.0	2.00	5.09	39.2	40.7	3000	1.43
C2060H SBR-L TDS	1.50"	38.10	40.60	20.00	37.00	17.80	18.0	3.20	5.96	56.8	58.35	4200	2.14
C2060H SBR-L JDS	1.50"	38.10	33.10	15.50	36.50	22.50	18.0	3.20	5.96	49.3	50.85	4200	2.04

Electro-conductive Type Big Center Roller available at request.
Snap cover top available at size C2050 at request.

SNAP COVER (CVR)-

Snap covers have been developed to prevent small objects, example screws, chips, from jamming the conveyor line.

This is currently available on size C2050 JDS & C2050 SBR-L JDS (Patented : M279422)

