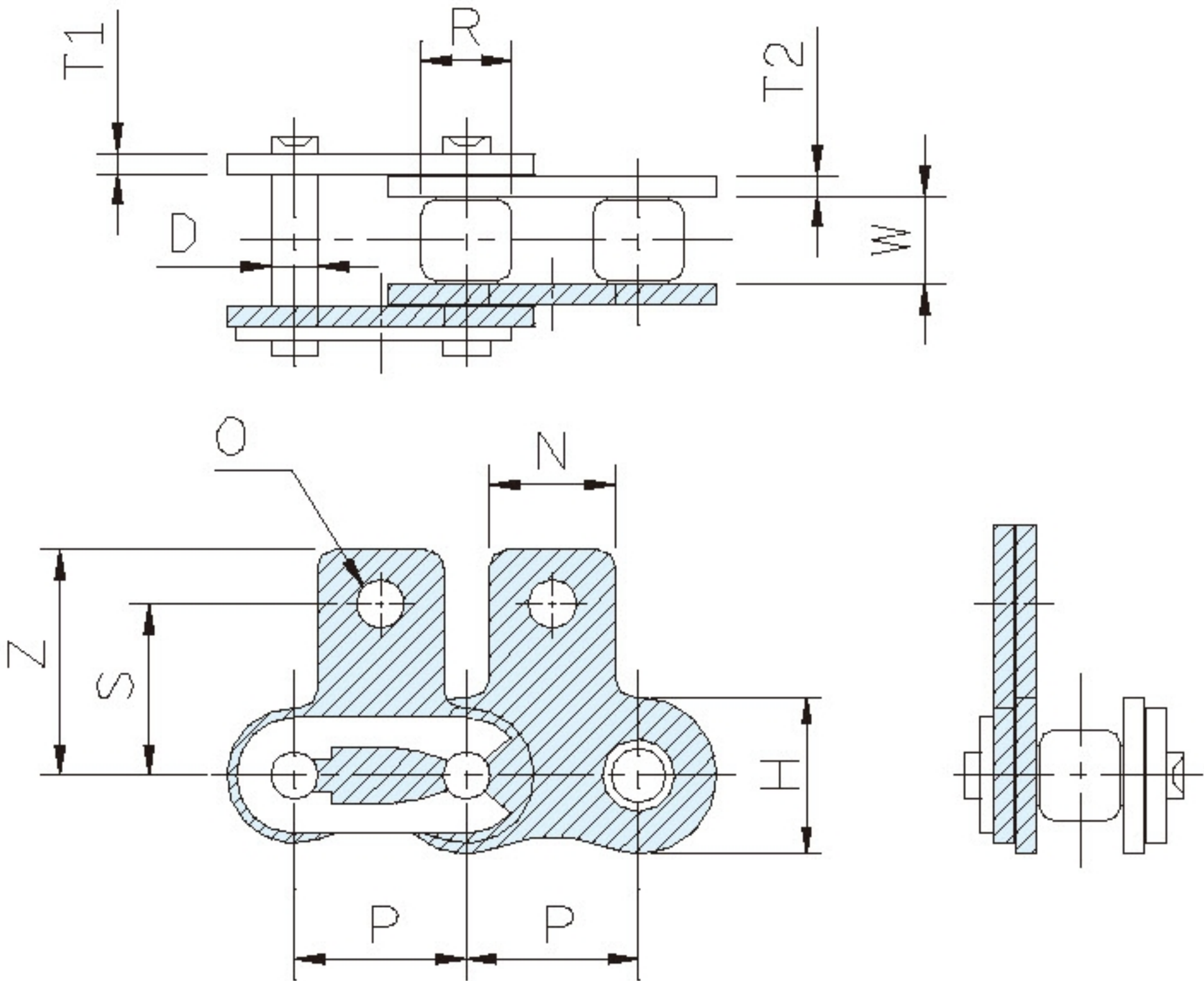
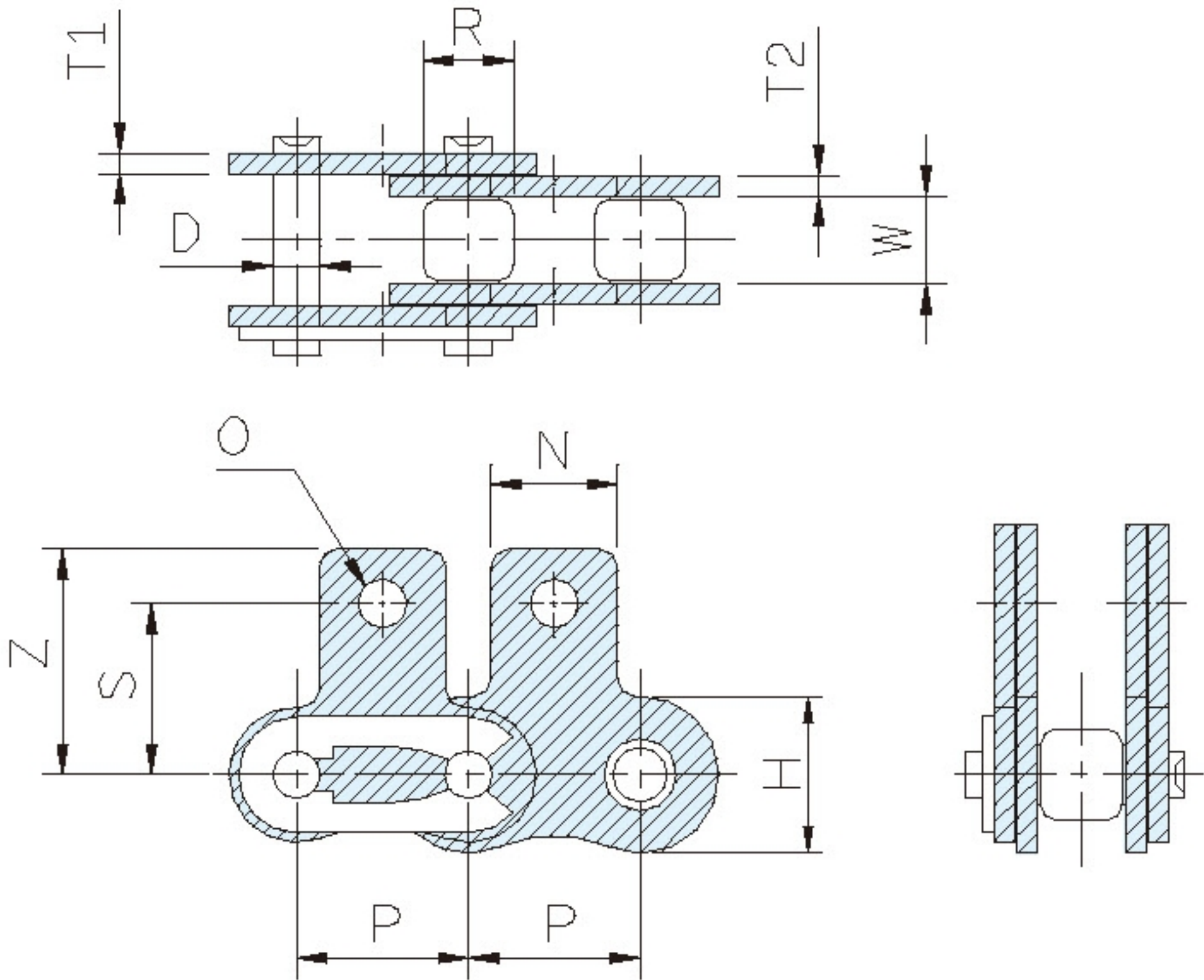


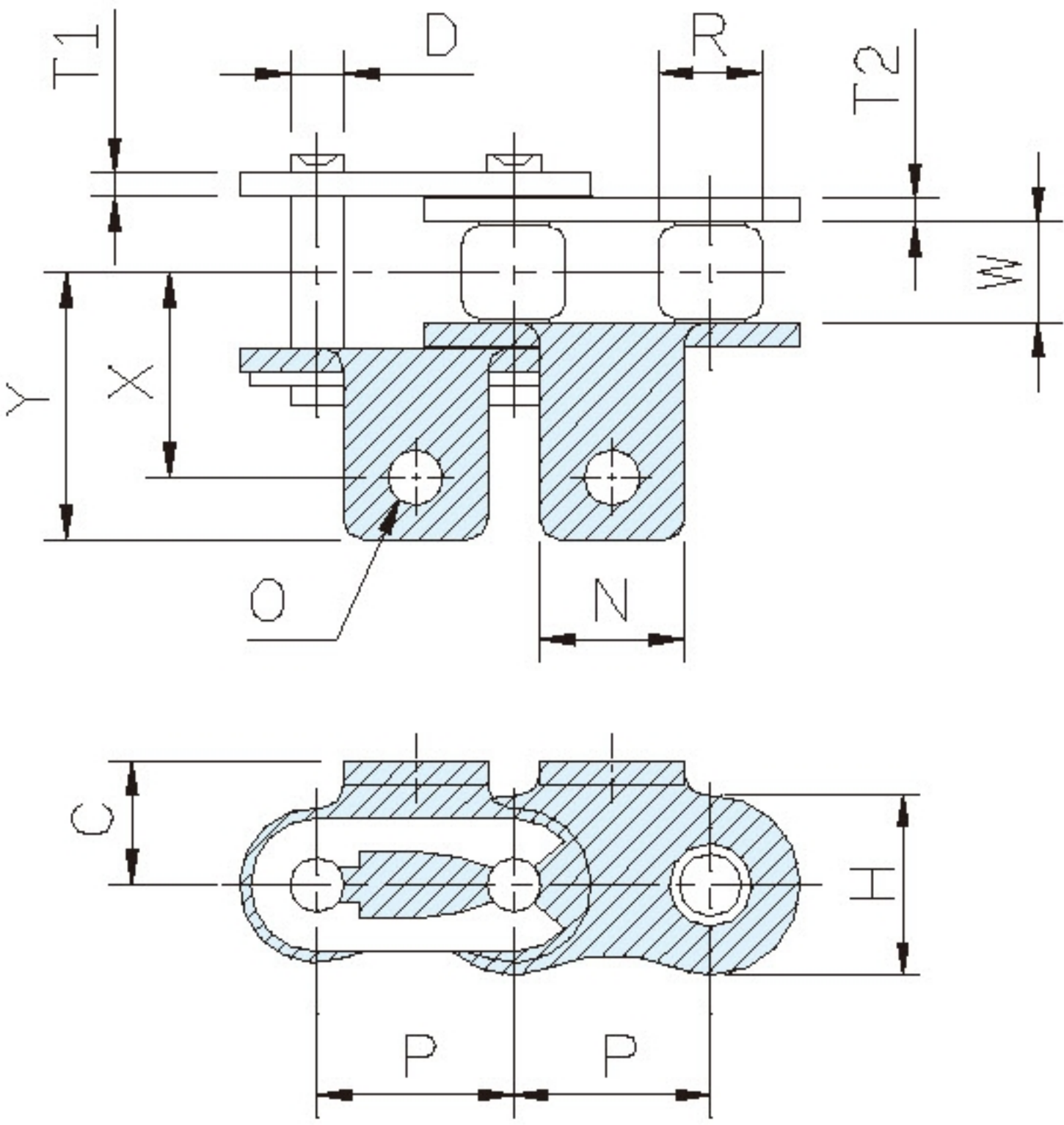
SA1



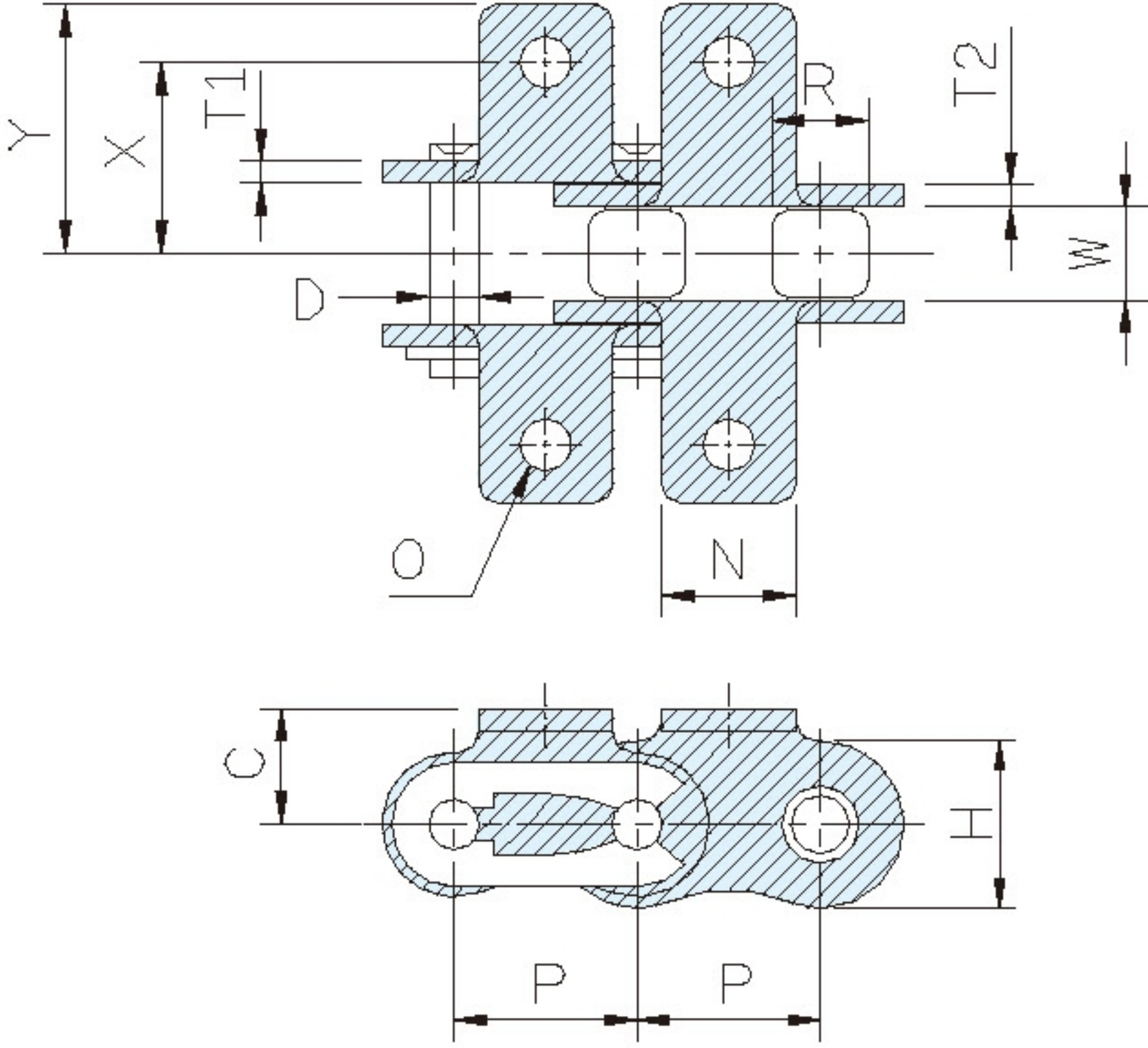
SK1



A1



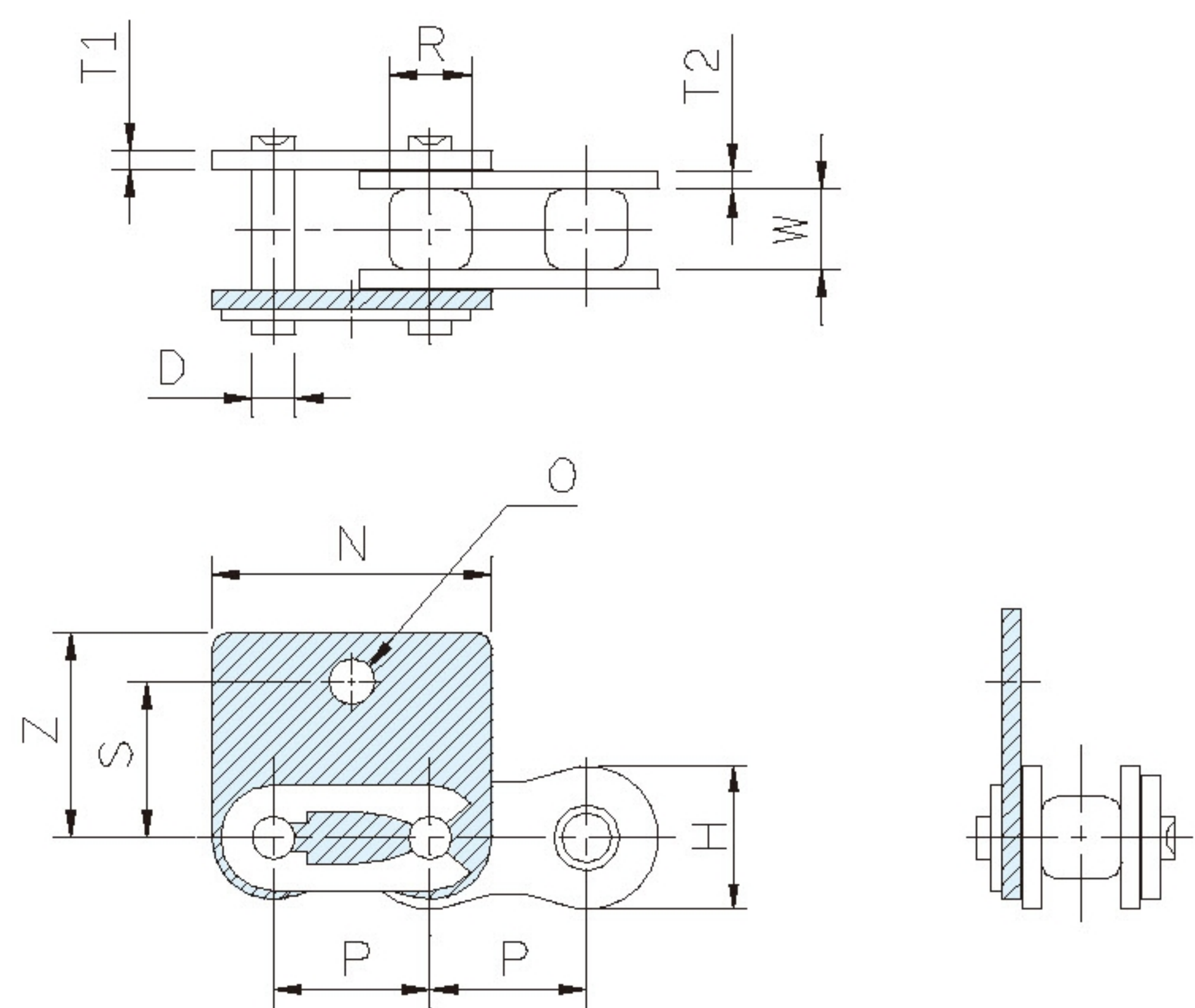
K1



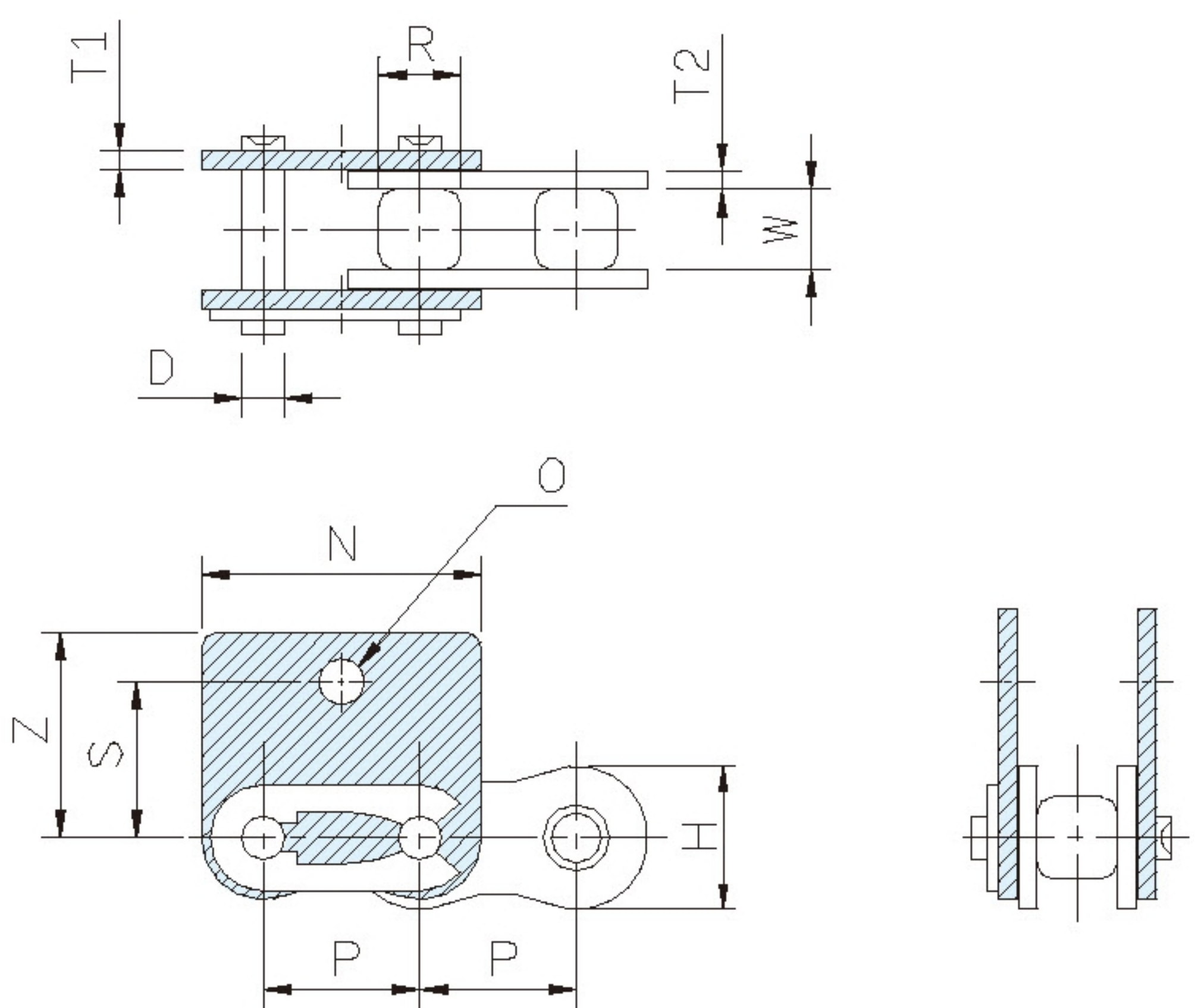
CHAIN NO.	Pitch		Width	Roller	Plate			Pin	Attachment								Allowable Load kgf(max)
	P		W	Dia	Height	Thick.		Dia		SA-1 SK-1	A-1 K-1	A-1,K-1			SA-1,SK-1		
	inch	mm	(min)	R(max)	H(max)	T1	T2	D(max)	N	O(min)		C	X	Y	S	Z	
08BSS	0.5"	12.70	7.75	8.51	11.81	1.50	1.50	4.45	11.00	4.30		---	---	---	13.70	20.80	50
D08BSS	0.5"	12.70	7.75	8.51	11.81	1.50	1.50	4.45	11.00	4.30		---	---	---	13.00	20.80	50
K08BSS	0.5"	12.70	7.75	8.51	11.81	1.50	1.50	4.45	11.00	4.30		8.90	13.80	20.85	---	---	50
10BSS	0.625"	15.875	9.65	10.16	14.73	1.50	1.50	5.08	14.00	5.30		10.30	15.90	24.80	16.50	24.90	66
12BSS	0.75"	19.05	11.68	12.07	16.13	1.70	1.80	5.72	18.00	6.60		12.20	17.60	26.35	18.50	28.20	90
D12BSS	0.75"	19.05	11.68	12.07	16.13	1.70	1.80	5.72	18.00	6.40	6.60	---	---	---	21.00	28.20	90
16BSS	1"	25.40	17.02	15.88	21.08	3.20	4.00	8.28	24.00	8.40		17.00	29.00	41.90	27.40	39.70	209
D16BSS	1"	25.40	17.02	15.88	21.08	3.20	4.00	8.28	24.00	6.60		---	---	---	23.00	39.70	209
K16BSS	1"	25.40	17.02	15.88	21.08	3.20	4.00	8.28	24.00	8.40		17.00	29.00	42.80	---	---	209

Any special specifications, please feel free to contact us.
Note : AISI 304 chain is with slightly magnetic due to cold forming of parts.

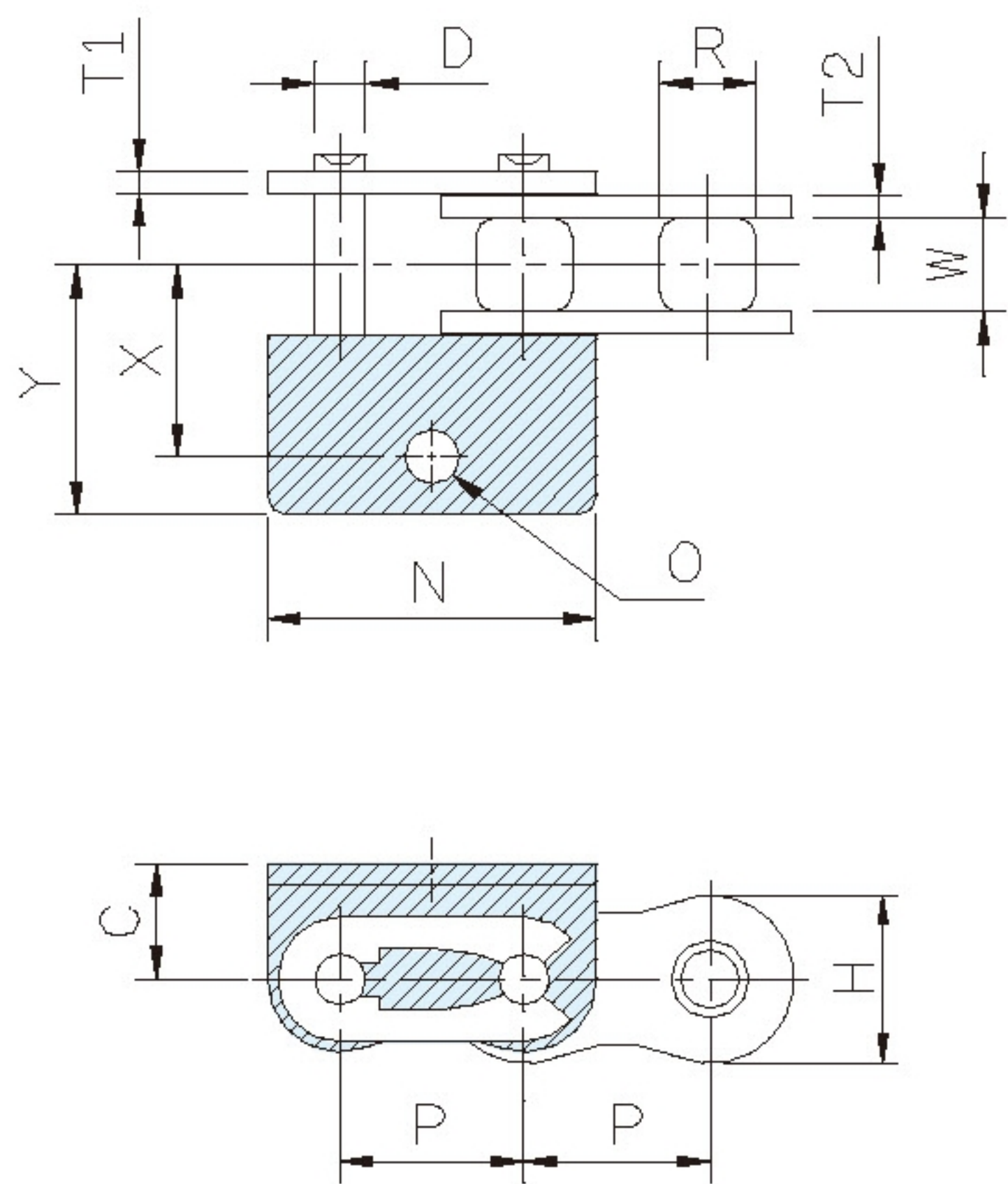
WSA1



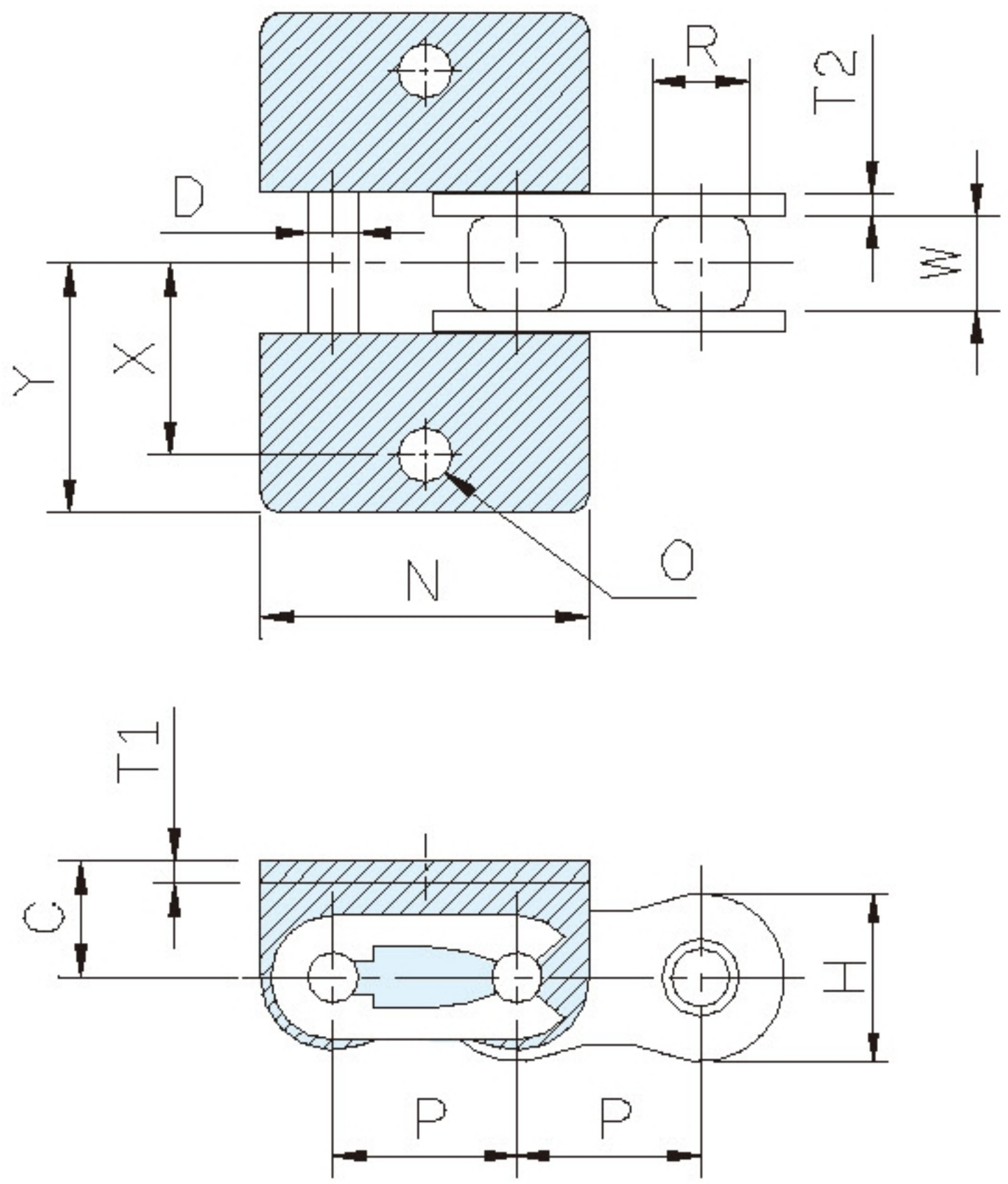
WSK1



WA1



WK1



CHAIN NO.	Pitch		Width	Roller	Plate			Pin	Attachment								Allowable
	P		W	Dia	Height	Thick.		Dia			WA-1,WK-1			WSA-1,WSK-1		Load	
	inch	mm	(min)	R(max)	H(max)	T1	T2	D(max)	N	O	C	X	Y	S	Z	kgf(max)	
08BSS	0.5"	12.70	7.75	8.51	11.81	1.50	1.50	4.45	22.90	4.30	—	—	—	13.70	20.80	50	
K08BSS	0.5"	12.70	7.75	8.51	11.81	1.50	1.50	4.45	22.90	4.30	8.90	13.80	20.85	—	—	50	
10BSS	0.625"	15.875	9.65	10.16	14.73	1.50	1.50	5.08	28.95	5.30	10.30	15.90	24.80	16.50	24.90	66	
12BSS	0.75"	19.05	11.68	12.07	16.13	1.70	1.80	5.72	36.00	6.60	12.20	17.60	26.35	18.50	28.20	90	
16BSS	1"	25.40	17.02	15.88	21.08	3.20	4.00	8.28	45.70	8.40	17.00	29.00	41.90	27.40	39.70	209	
D16BSS	1"	25.40	17.02	15.88	21.08	3.20	4.00	8.28	45.70	6.60	—	—	—	23.00	39.70	209	
K16BSS	1"	25.40	17.02	15.88	21.08	3.20	4.00	8.28	45.70	8.40	17.90	29.00	42.80	—	—	209	

Any special specifications, please feel free to contact us.
Note : AISI 304 chain is with slightly magnetic due to cold forming of parts.