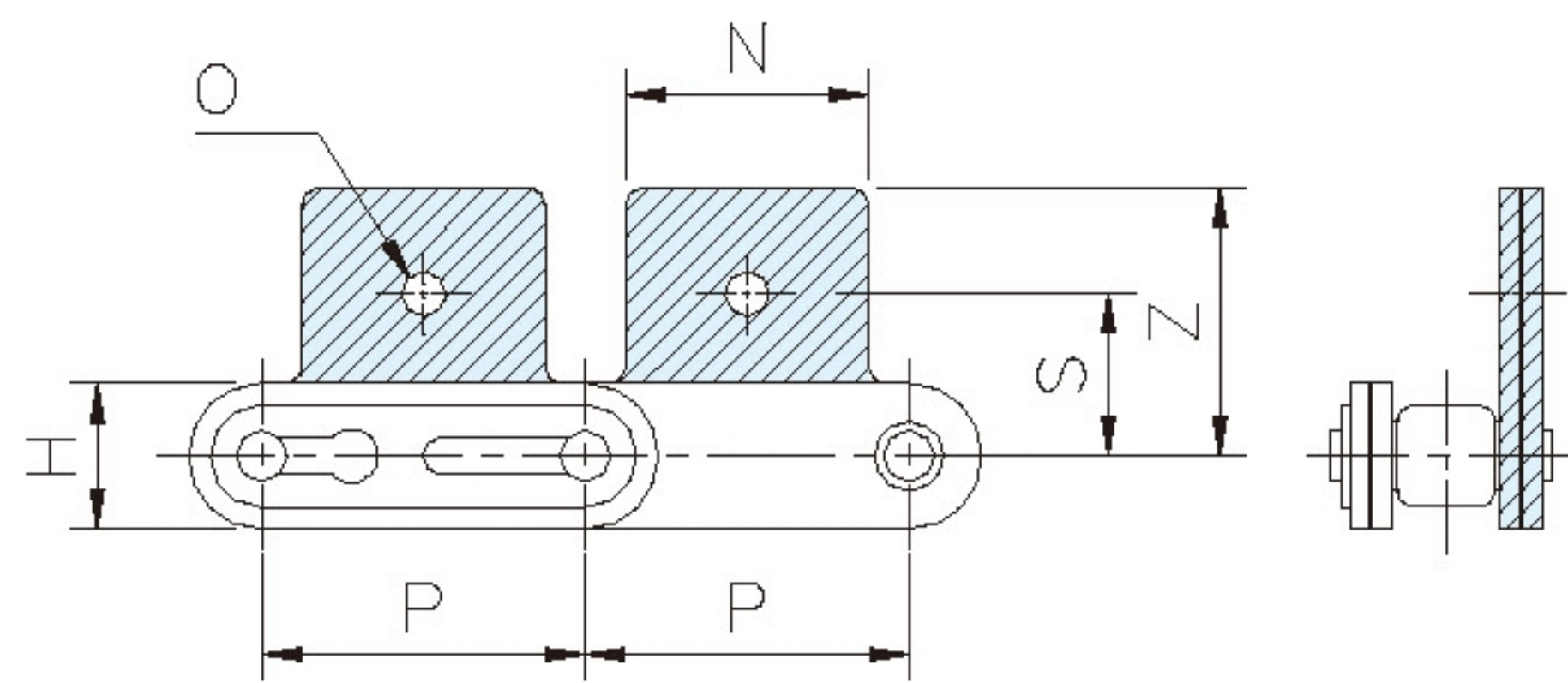
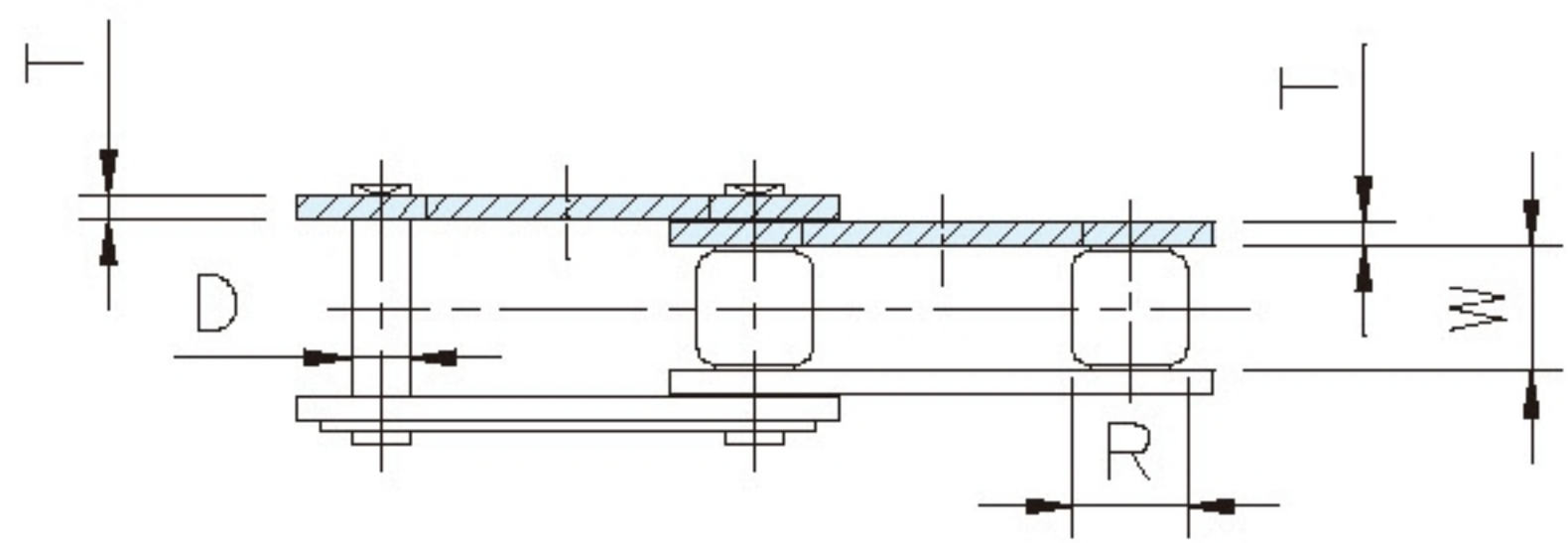
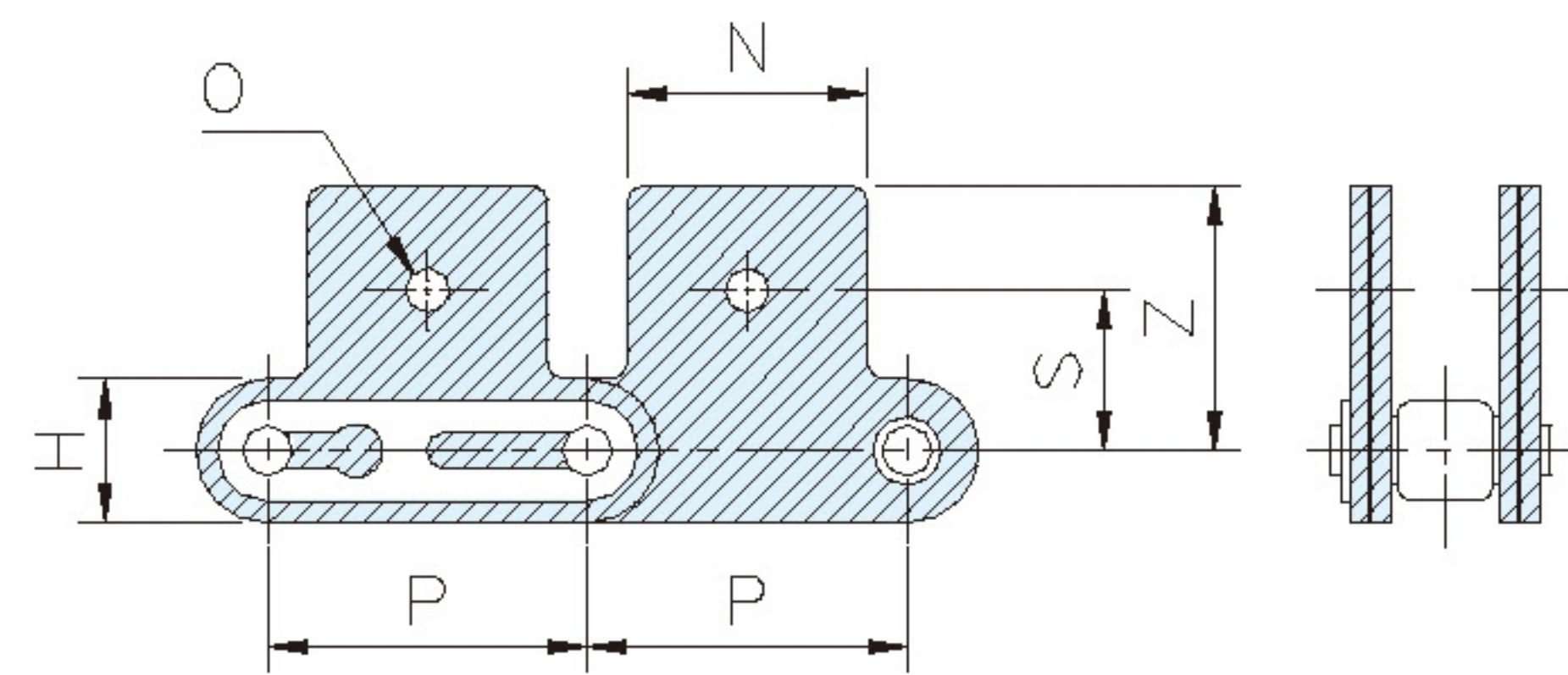
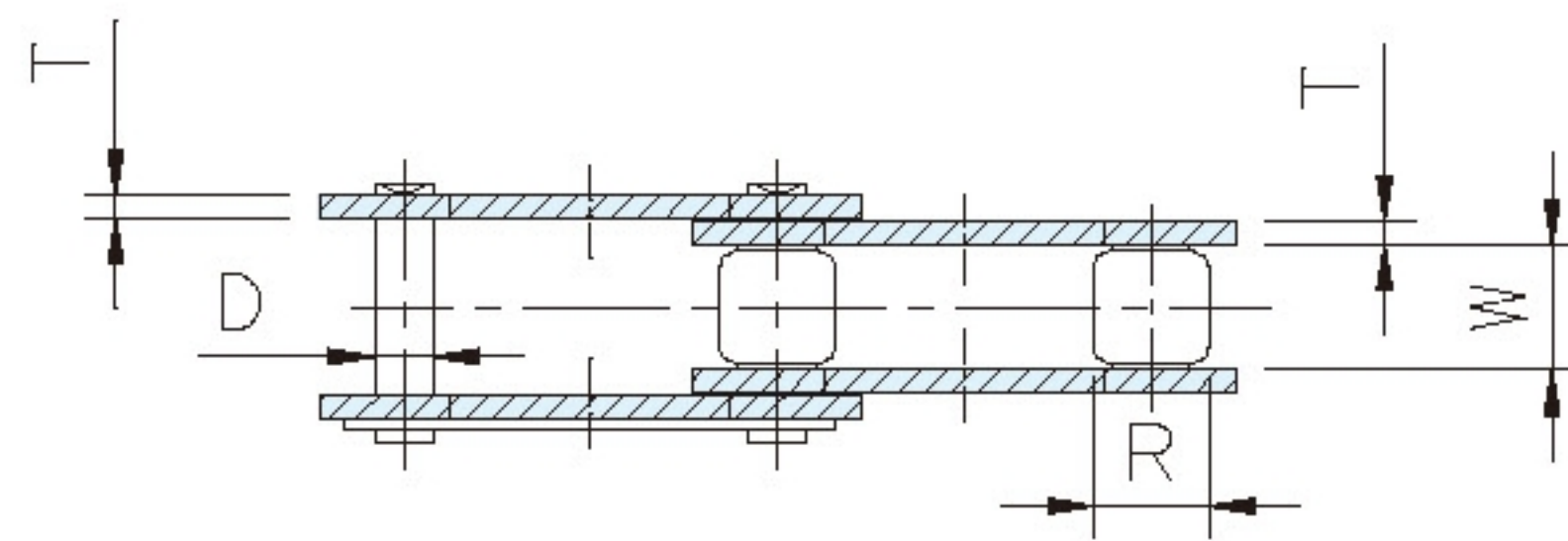


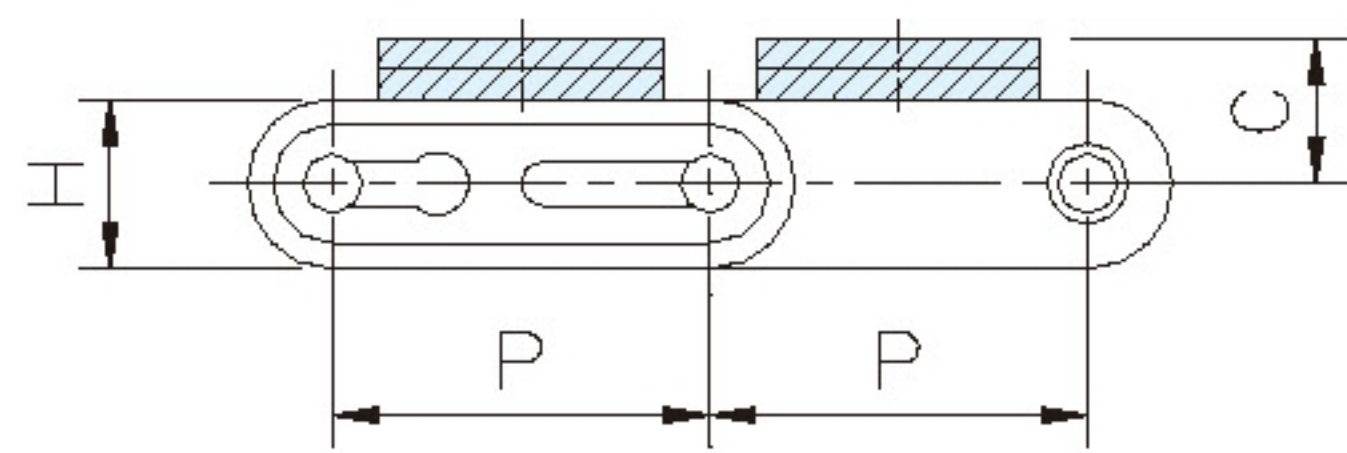
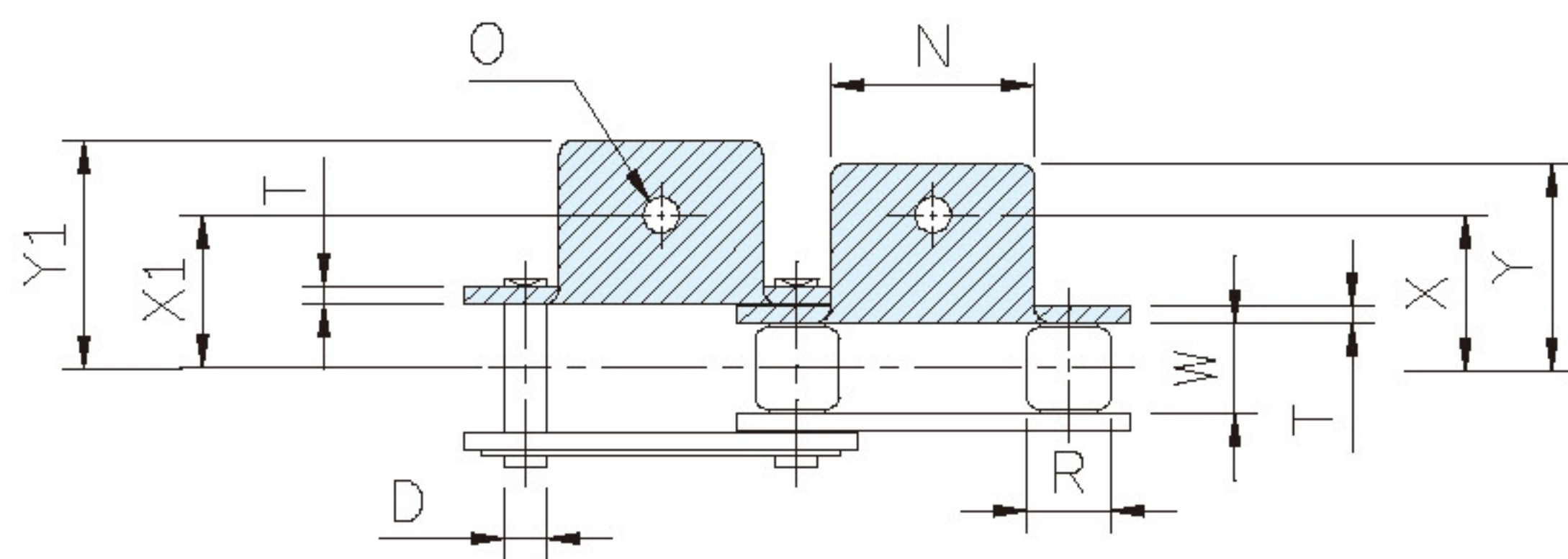
SA1



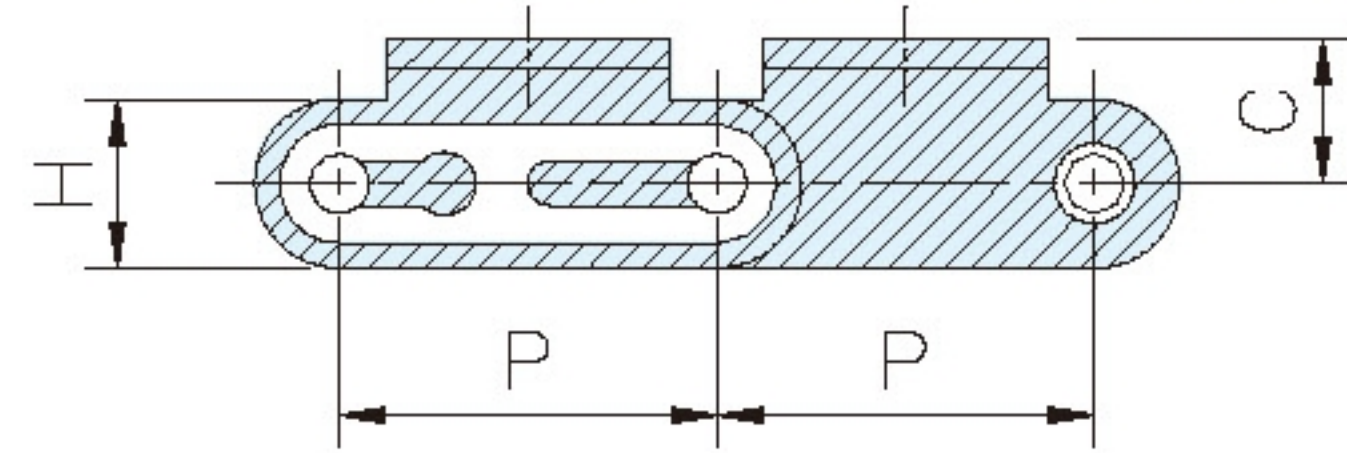
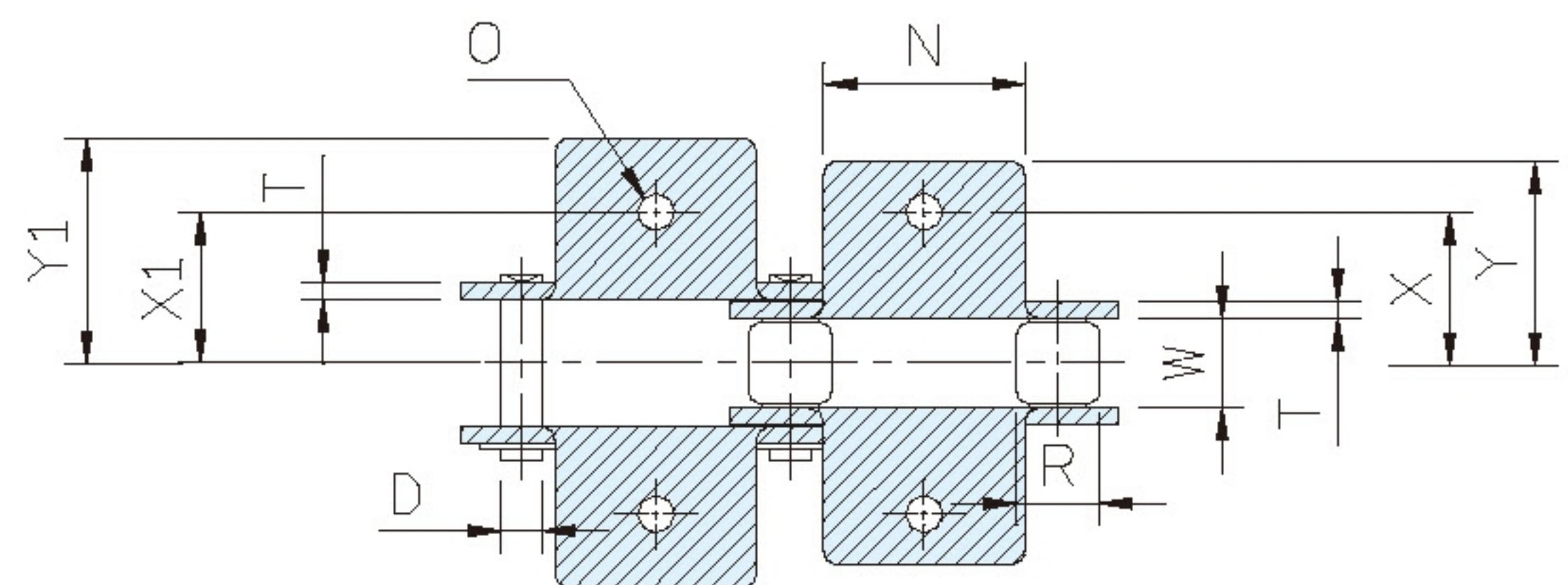
SK1



A1



K1



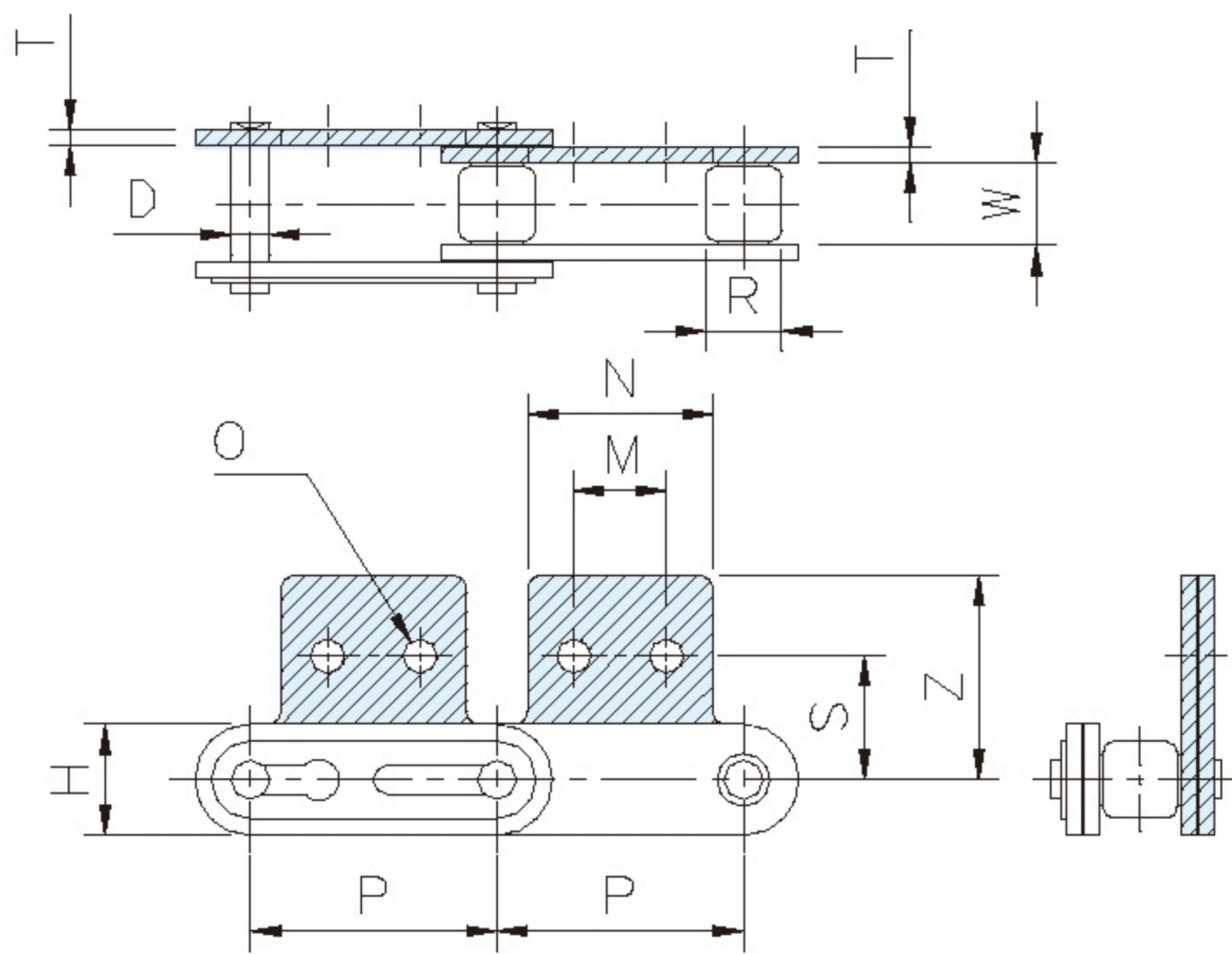
CHAIN NO.	Pitch		Width	Roller	Plate		Pin	Attachment										Allowable
	P		W	Dia	Height	Thick.	Dia	A-1 K-1		SA-1 SK-1	A-1,K-1					SA-1,SK-1		Load kgf(max)
	inch	mm	(min)	R(max)	H(max)	T	D(max)	N	O(min)		C	X	Y	X1	Y1	S	Z	
C2040SS	1"	25.40	7.85	7.92	12.0	1.50	3.98	19.10	3.50	5.10	9.10	12.70	17.65	12.70	19.30	11.10	19.80	45
C2042SS	1"	25.40	7.85	15.88	12.0	1.50	3.98	19.10	3.50	5.10	9.10	12.70	17.65	12.70	19.30	11.10	19.80	45
C2050SS	1-1/4"	31.75	9.40	10.16	15.0	2.00	5.09	23.80	5.10	6.70	11.10	15.90	21.95	15.90	24.15	14.25	24.10	70
C2052SS	1-1/4"	31.75	9.40	19.05	15.0	2.00	5.09	23.80	5.10	6.70	11.10	15.90	21.95	15.90	24.15	14.25	24.10	70
C2060HSS	1-1/2"	38.10	12.57	11.91	18.0	3.20	5.96	28.60	5.10	8.60	14.70	21.45	28.20	21.45	31.45	17.50	31.55	105
C2062HSS	1-1/2"	38.10	12.57	22.23	18.0	3.20	5.96	28.60	5.10	8.60	14.70	21.45	28.20	21.45	31.45	17.50	31.55	105
C2080HSS	2"	50.80	15.75	15.88	24.1	4.00	7.94	38.10	6.70	10.20	19.10	27.80	36.52	27.80	40.70	22.20	40.50	180
C2082HSS	2"	50.80	15.75	28.58	24.1	4.00	7.94	38.10	6.70	10.20	19.10	27.80	36.52	27.80	40.70	22.20	40.50	180

Any special specifications, please feel free to contact us.

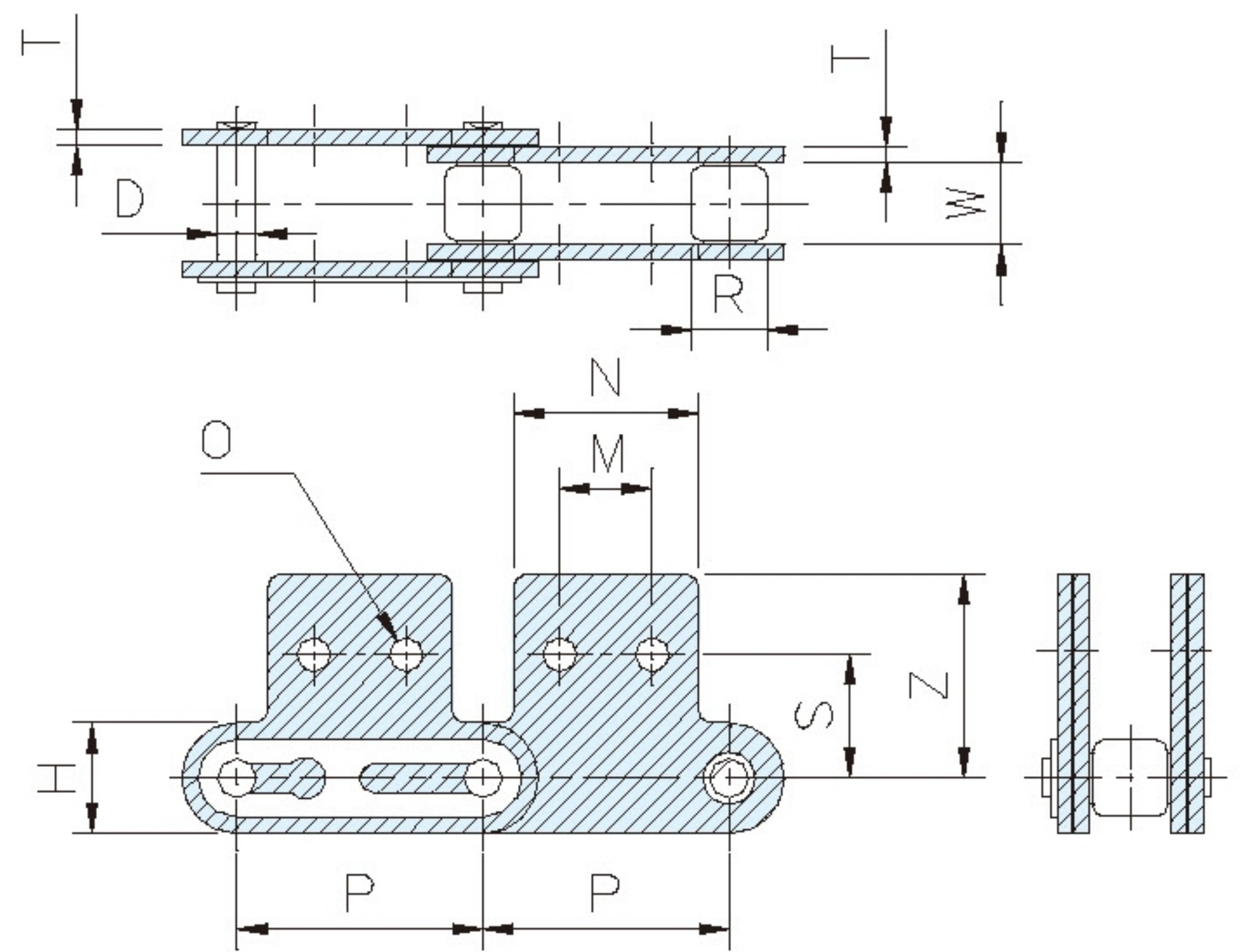
Note : AISI 304 chain is with slightly magnetic due to cold forming of parts.



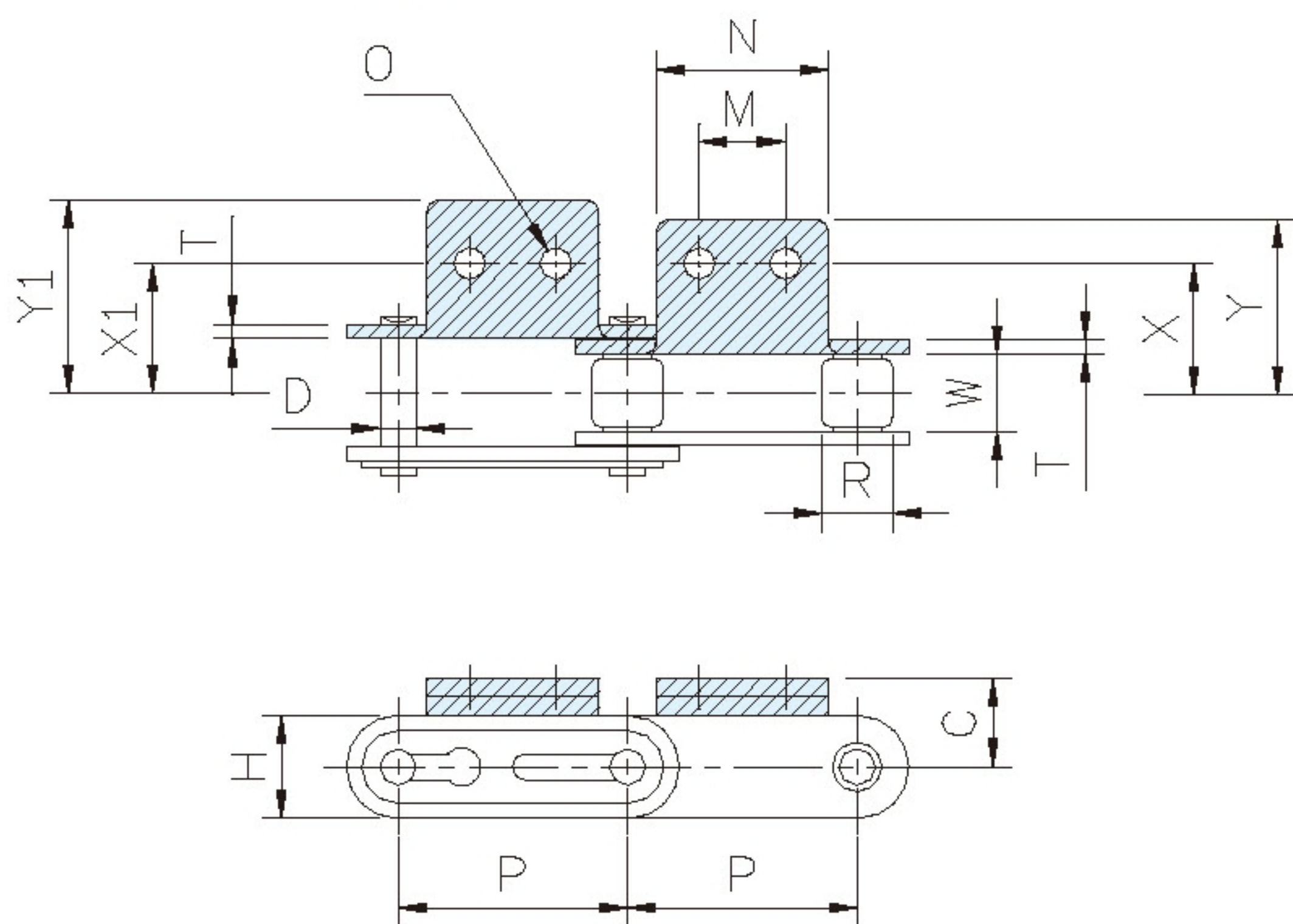
SA2



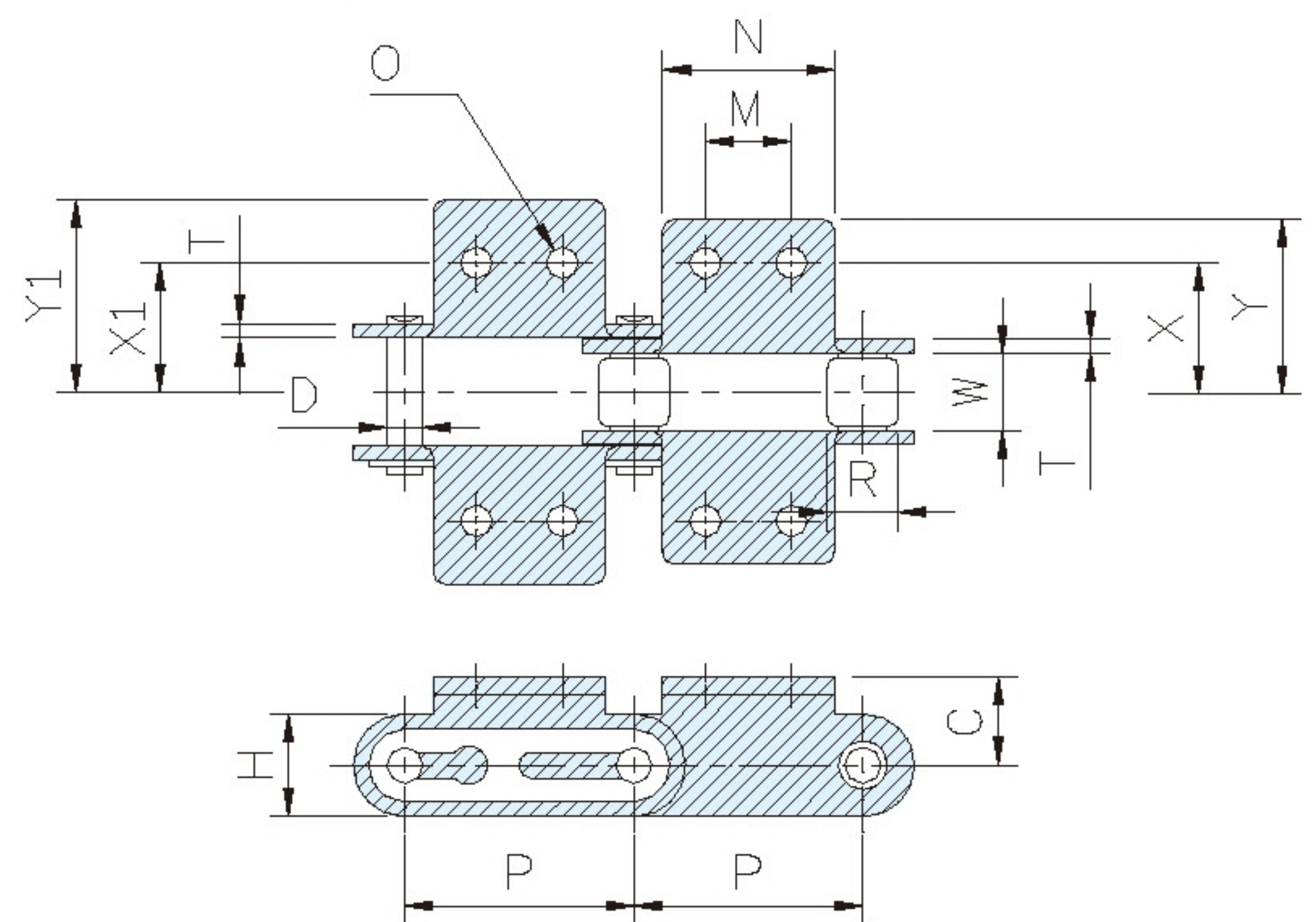
SK2



A2



K2



CHAIN NO.	Pitch		Width	Roller	Plate		Pin	Attachment										Allowable Load kgf(max)
	P		W	Dia	Height	Thick.	Dia				A-2,K-2					SA-2,SK-2		
	inch	mm	(min)	R(max)	H(max)	T	D(max)	N	O(min)	M	C	X	Y	X1	Y1	S	Z	
C2040SS	1"	25.40	7.85	7.92	12.0	1.50	3.98	19.10	3.50	9.50	9.10	12.70	17.65	12.70	19.30	13.60	19.80	45
C2042SS	1"	25.40	7.85	15.88	12.0	1.50	3.98	19.10	3.50	9.50	9.10	12.70	17.65	12.70	19.30	13.60	19.80	45
C2050SS	1-1/4"	31.75	9.40	10.16	15.0	2.00	5.09	23.80	5.10	11.90	11.10	15.90	21.95	15.90	24.15	15.90	24.10	70
C2052SS	1-1/4"	31.75	9.40	19.05	15.0	2.00	5.09	23.80	5.10	11.90	11.10	15.90	21.95	15.90	24.15	15.90	24.10	70
C2060HSS	1-1/2"	38.10	12.57	11.91	18.0	3.20	5.96	28.60	5.10	14.30	14.70	21.45	28.20	21.45	31.45	19.10	31.55	105
C2062HSS	1-1/2"	38.10	12.57	22.23	18.0	3.20	5.96	28.60	5.10	14.30	14.70	21.45	28.20	21.45	31.45	19.10	31.55	105
C2080HSS	2"	50.80	15.75	15.88	24.1	4.00	7.94	38.10	6.70	19.10	19.10	27.80	36.52	27.80	40.70	25.40	40.50	180
C2082HSS	2"	50.80	15.75	28.58	24.1	4.00	7.94	38.10	6.70	19.10	19.10	27.80	36.52	27.80	40.70	25.40	40.50	180

Any special specifications, please feel free to contact us.

Note : AISI 304 chain is with slightly magnetic due to cold forming of parts.