

Occlutech PFO Occluder
Ordering information



Article No.	Disc Ø [mm]	Defect Size [mm]	Sheath Size* [F]	Flex Pusher II Article No. (colour**)
LA Single Layer				
18PFO25S	23/25	8<D≤13	9	51FP120 ●
LA Double Layer				
19PFO18D	16/18	D≤8	7	51FP100 ○
19PFO25D	23/25	8<D≤13	9	51FP120 ●
19PFO30D	27/30	13<D≤15	9	51FP120 ●
19PFO35D	31/35	15<D≤18	11	51FP160 ○

Availability subject to regulatory approval.
Product data may be subject to change.
Contact your Occlutech representative for information.

* Occlutech Delivery Set (ODS). ** Colour defines Pusher colour.

QUALITY MADE IN EUROPE.

Occlutech adheres to the highest quality standards. We never compromise on quality. Our dedication to patients and the medical community is the main driver of our vision. We want to be in the forefront of developing technologies and products that matter, that make a difference and that will help our customers to be at the forefront when it comes to better treating structural heart disease.

Content references:

1. Occlutech Percutaneous Patent Foramen Ovale Closure: Safety and Efficacy Registry (OPPOSE), Multicentric Registry, UK.
2. Castleman LS et. al. Biocompatibility of Nitinol Alloy as an Implant Material. Journal of Biomedical Materials Research | 97 6:10:695.
3. Electrochemical Characterization of Nitinol Occluder, Natural and Medical Sciences Institute at the University of Tübingen, mNI<0,014 µg/(cm²·d).
4. EuroIntervention – Amplatzer versus Figulla occluder for transcatheter patent foramen ovale closure.

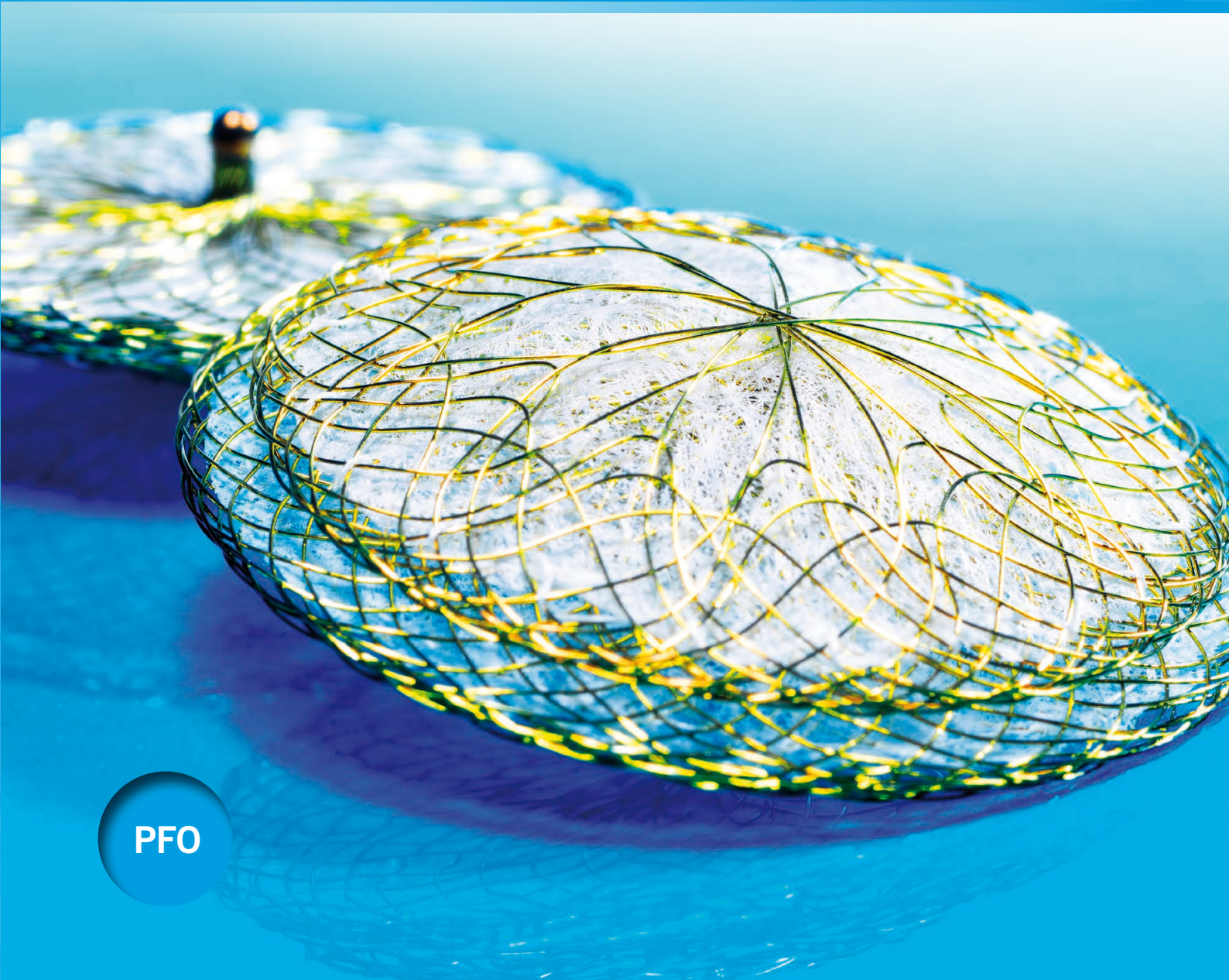
Customer Service International
Occlutech, La Cours Gata 2, SE-252 31 Helsingborg, Sweden
Tel +46 (0)42 33 65 32, Fax +46 (0)42 311 09 70
order@occlutech.com, www.occlutech.com



Perfecting Performance



Occlutech PFO Occluder



Designed for excellence and safety.

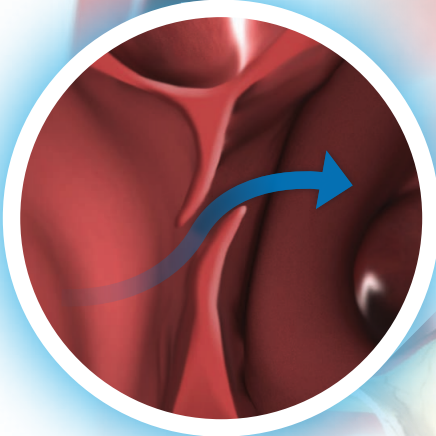
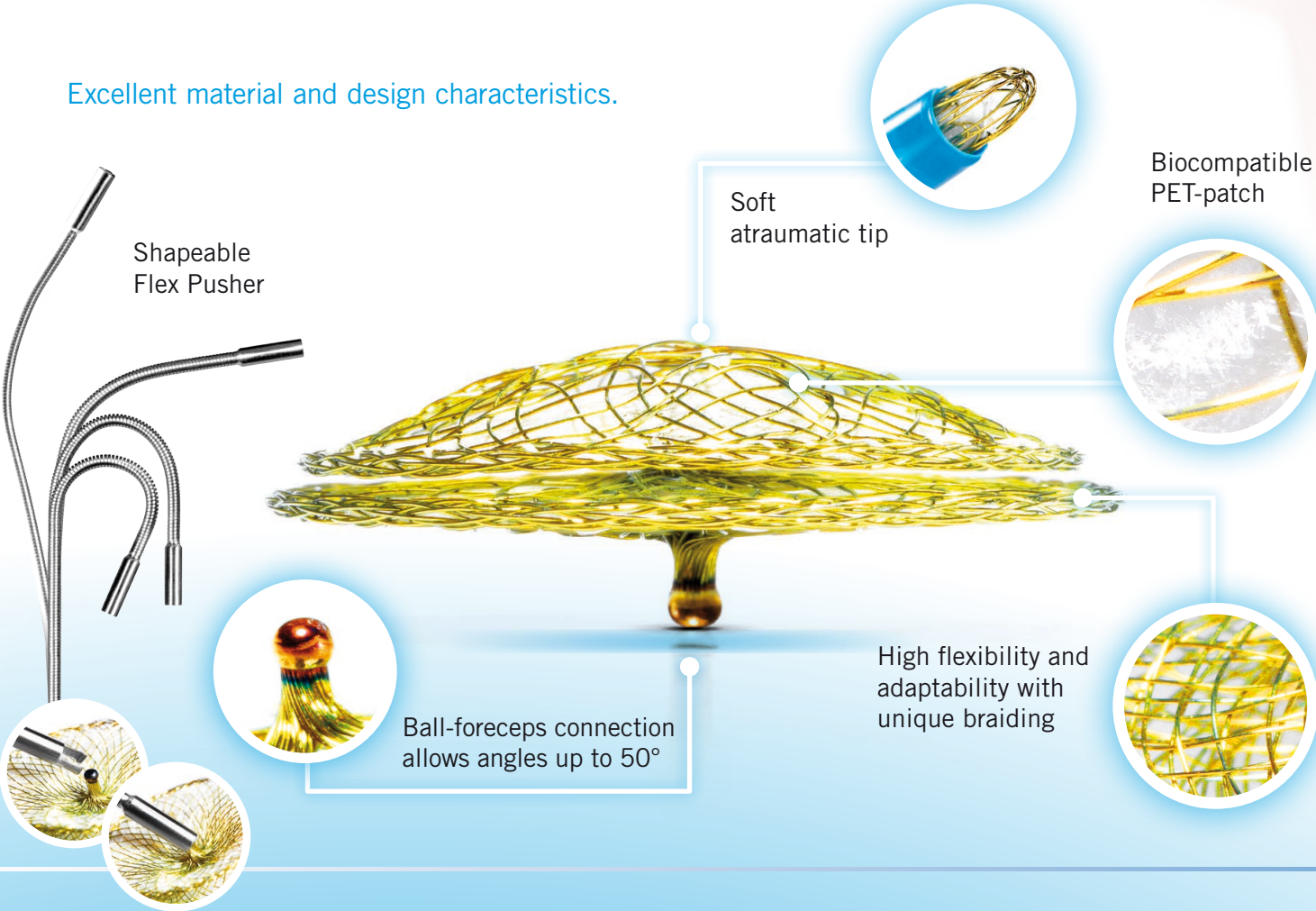


PRODUCT FEATURES

The Flex II PFO occluder enables physicians to simplify implantations and achieve state-of-the-art results¹ with a steep learning curve.

- The unique ball-connection between pusher and Occluder safely locks it, while it freely follows the anatomy. Once in place it is easy and fast to deliver.
- Handknitted biocompatible PET-patch allow immediate verification of occlusion effect by Ultrasound and X-Ray.
- Titanium oxide covered Nitinol shows the best values of biocompatibility² and minimized Nickel release.³
- Optimized braiding: No hub and reduced material on left arterial disc guarantees better ingrowth.

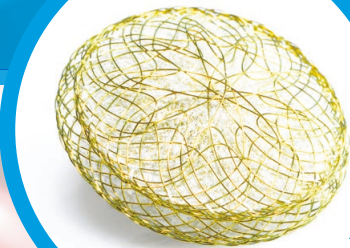
Excellent material and design characteristics.



PFO defect



PFO Occluder delivered



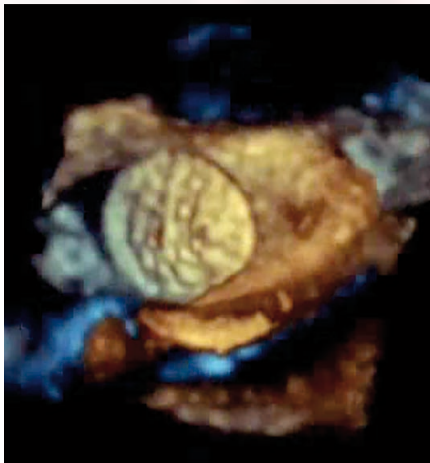
PFO



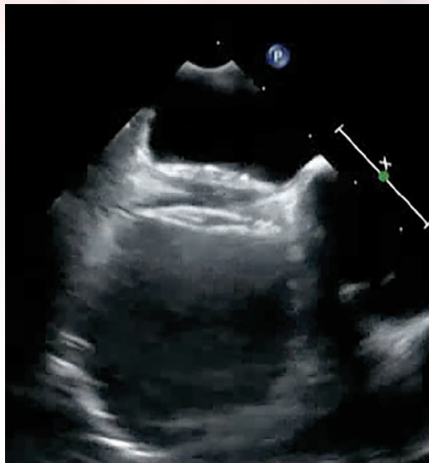
CLINICAL BENEFITS

Over 50,000 PFO occluders have been delivered to over 80 countries around the world, with excellent track record regarding performance and safety.

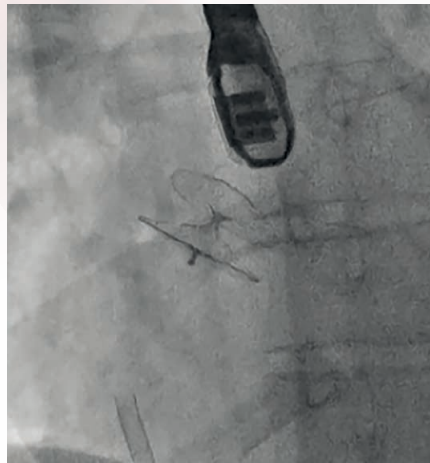
- Excellent periprocedural outcome and excellent 3 months TEE-follow up results for PFO reshunting.⁴
- Mean procedure time: less than 30 minutes with decreased fluoroscopic time.⁴



TEE cross section of an optimally implanted PFO Occluder.



The hubless distal disc in 3-D TEE projection.



The Flex II in X-ray view.