

Occlutech®
PLD*
Ordering information

Occlutech®
PLD SQUARE_W
1.*

Article No.	Product Name	D1 (mm)	D2 (mm)	D3 (mm)	Min. ID (mm)	Size (F)	FP (Item no.)
60 PLD 04W	PLD Square	13	11.5	4	2.21	6	50FP100 & 50FP100L
60 PLD 05W	PLD Square	14	12.5	5	2.21	6	50FP100 & 50FP100L
60 PLD 06W	PLD Square	16	14	6	2.21	6	50FP100 & 50FP100L
60 PLD 07W	PLD Square	17	16	7	2.54	7	50FP100 & 50FP100L

Occlutech®
PLD SQUARE_T
1.*

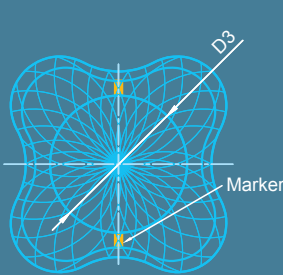
Article No.	Product Name	D1 (mm)	D2 (mm)	DS (mm)	Min. ID (mm)	Size (F)	FP (Item no.)
62 PLD 03T	PLD Square	11.5	10	3	2.21	6	50FP100 & 50FP100L
62 PLD 05T	PLD Square	14	12.5	5	2.21	6	50FP100 & 50FP100L
62 PLD 07T	PLD Square	17	16	7	2.54	7	50FP100 & 50FP100L

Occlutech®
PLD RECTANGULAR_W
1.*

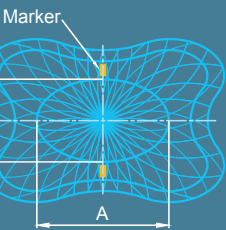
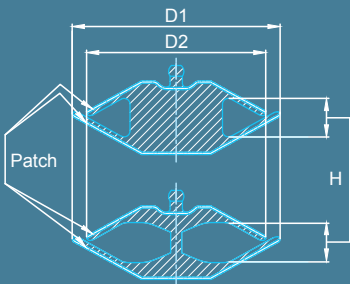
Article No.	Product Name	D1 (mm)	D2 (mm)	AxB (mm)	Min. ID (mm)	Size (F)	FP (Item no.)
61 PLD 04W	PLD Rectangular	11.5	10	4x2	2.21	6	50FP100 & 50FP100L
61 PLD 06W	PLD Rectangular	14	12.5	6x3	2.21	6	50FP100 & 50FP100L
61 PLD 08W	PLD Rectangular	16.5	15	8x4	2.54	7	50FP100 & 50FP100L
61 PLD 10W	PLD Rectangular	19	17	10x4	2.87	8	50FP100 & 50FP100L
61 PLD 12W	PLD Rectangular	21	19	12x5	3.20	9	50FP120 & 50FP120L
61 PLD 14W	PLD Rectangular	24	22	14x6	3.20	9	50FP120 & 50FP120L
61 PLD 16W	PLD Rectangular	26.5	24.5	16x8	3.40	10	50FP120 & 50FP120L
61 PLD 18W	PLD Rectangular	28.5	26.5	18x10	3.40	10	50FP120 & 50FP120L

Occlutech®
PLD RECTANGULAR_T
1.*

Article No.	Product Name	D1 (mm)	D2 (mm)	DS (mm)	Min. ID (mm)	Size (F)	FP (Item no.)
63 PLD 05T	PLD Rectangular	13	11.5	5x3	2.21	6	50FP100 & 50FP100L
63 PLD 07T	PLD Rectangular	16	14	7x4	2.54	7	50FP100 & 50FP100L
63 PLD 10T	PLD Rectangular	19	17	10x4	2.87	8	50FP100 & 50FP100L
63 PLD 12T	PLD Rectangular	21	19	12x5	3.20	9	50FP120 & 50FP120L



SQUARE



RECTANGULAR

- D1
- Length of the distal disc (bigger disc) for PLD
D2
- Length of the proximal disc (smaller disc) for PLD
D3
- Diameter of the waist for square PLD
AxB
- Length x Width of the waist of rectangular PLD
- DS
- Defect Size
H
- Height of the waist (3 mm for all sizes)
Min. ID
- Recommended minimum inner dimension for delivery sheath
FP
- Flex Pusher

1. W and T represent the types of connections between the discs. W stands for waist (D3 or AxB) and T stands for twist (connection diameter is negligible).
* Availability subject to regulatory approval.

Customer Service International
Occlutech, La Cours Gata 2, SE-252 31 Helsingborg, Sweden
Tel +46 (0)42 33 65 32, Fax +46 (0)42 311 09 70
order@occlutech.com, www.occlutech.com



Perfecting Performance
in Paravalvular Leak Closure



Occlutech®
PLD
Paravalvular Leak Device





Occlutech® PLD Paravalvular Leak Device

Clinical Background - Medical Need

Paravalvular mitral and aortic leaks after surgical valve replacement have an incidence varying between two and twelve percent. Up to 60% of the leaks are evident in the first year after implantation and are frequent in the presence of a calcified annulus and re-surgery. Many leaks are asymptomatic and benign, but some patients with significant leaks may suffer heart failure, hemolysis, volume overload or cardiac chamber dilatation.

Repeat surgery for such leaks frequently carries significant risk of morbidity and mortality, as well as recurrence of the leak. In many instances surgery is impossible due to the health status of the patient.

Frequently, the defects are of a stretched crescent shape close to the edge of the valve, making closure with traditional implants difficult.

The Occlutech PLD paravalvular leak device provides a specific, uniquely designed solution for transapical or trans femoral closure of these leaks.

Occlutech PLD is a unique device; specifically designed to close such leaks it brings with it a lower incidence of residual shunt and a better ability to place the device without interfering with the valve.

Occlutech Technology

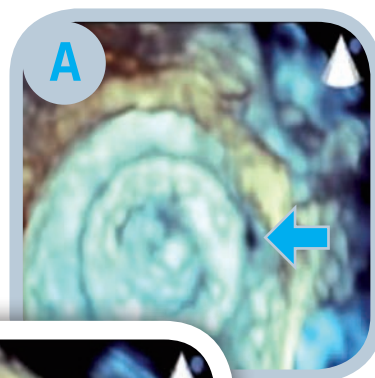
The unique patented Occlutech braiding technology is known for its ability to create gentler, more flexible implants as demonstrated in a wide range of occluder products. Occlutech products are known to adapt very well to the anatomy and for their highly biocompatible surfaces. In creating a unique product to support the treatment of paravalvular leaks, Occlutech has taken full advantage of its unique technological position.

Occlutech® PLD

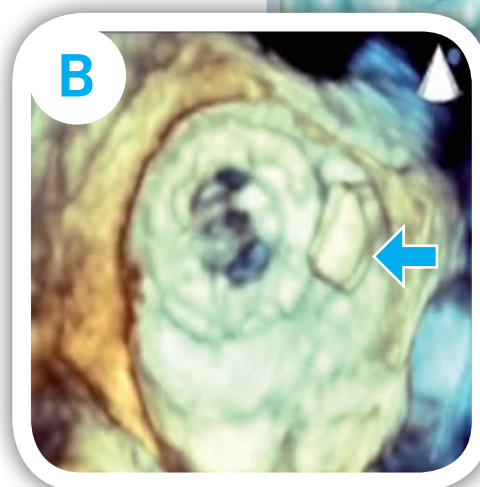
The Occlutech PLD device is designed to specifically meet the needs in paravalvular leak closure. The design of the device allows alignment over the leak and therefore the ability to achieve complete closure. The device can be delivered from various routes (transapical and transfemoral) using small delivery catheters.

Clinical cases carried out to date, demonstrate the versatility of the device. In both mitral and aortic cases, a rectangular shape device is important to cover a crescent shape defect while avoiding interference with the valve. A square shaped device is also available. The presence of gold markers in the device enhances visibility and allows accurate deployment and deployment across the defect.

A. Typical half-moon shaped paravalvular leak



B. Paravalvular leak closed with Occlutech PLD 61PLDW 10x4 mm



Product Features:

The Occlutech PLD is an ideal device for closing paravalvular leaks as it offers a range of unique features:

- Unique braiding avoiding a distal hub giving flexibility and adaptability
- Placement is facilitated by two gold markers
- High success rate in achieving complete closure
- Repositionable and fully retrievable
- No interference with the prosthetic valve leaflets
- Non-thrombogenic
- Requires only small delivery sheaths, allowing placement in tight and tortuous leaks
- No interference with flow dynamics
- Delivery allowed transapically or transfemorally
- User-friendly and easy to use

Waist & Twist

The Occlutech PLD is available with two types of connections between the discs, **Waist** or **Twist**. Example below shown on a Occlutech PLD Square.



Occlutech® PLD
Perfecting Performance
in Paravalvular Leak Closure