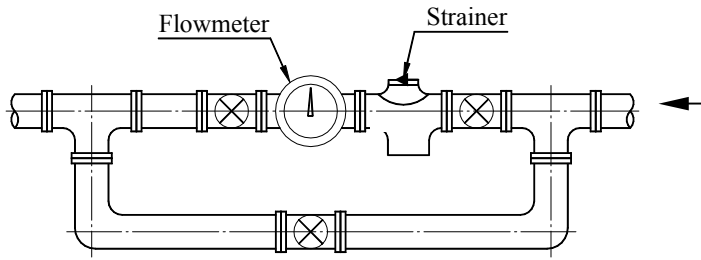
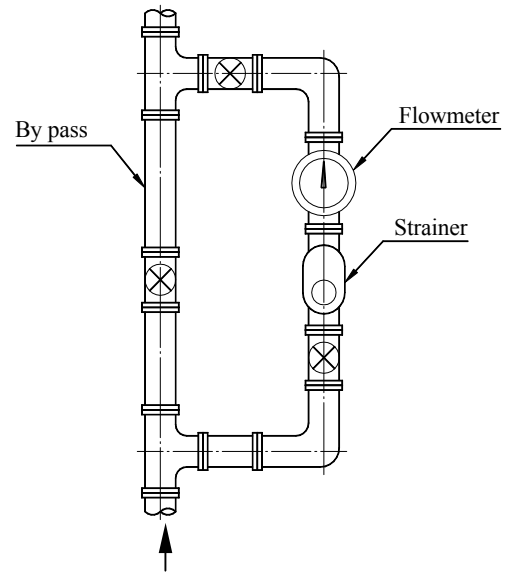


INSTALLATION MANUAL



Horizontal piping (from right to left)



Vertical piping (from bottom to top)

NOTE:

1. In order to prevent that dust and residues permeate through the oil meter, hence, installing strainer is necessary. On the other words, please pay more attention to keep the roots flow meter clean.
2. When installing the roots flow meter, the arrow symbol of the roots flow meter should be the same as the flow direction of the oil.
3. **The strainer should be connected with the roots flow meter directly as the diagrams above.** The better way is to set up a by-pass pipe.
4. Usually, some dusts still remain in the new pipes, hence, cleaning the pipe is necessary before installing the roots flow meter.
5. During operating the roots flow meter, it must be within flow range, pressure, and temperature as indicated on the name of plate accordingly.
6. When installing the roots flow meter, the register plate does not face to the sky, but should face to the user.