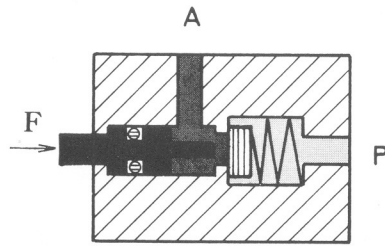
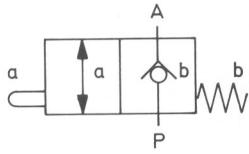


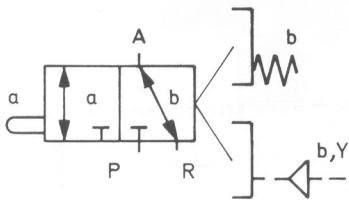
## 4.2 機械式氣壓閥

2/2 - 閥



靜止時，P不通A。  
 加外力F，P通A。  
 b表示彈簧

3/2 - 閥



### 1. 彈簧回位

靜止時， P不通A  
 A通R

加外力F P通A  
 R封閉

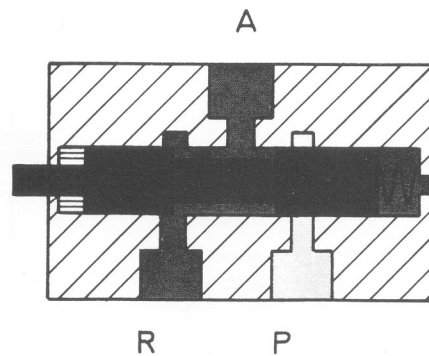
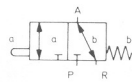
### 2. 氣壓回位

加外力F P通A  
 R封閉

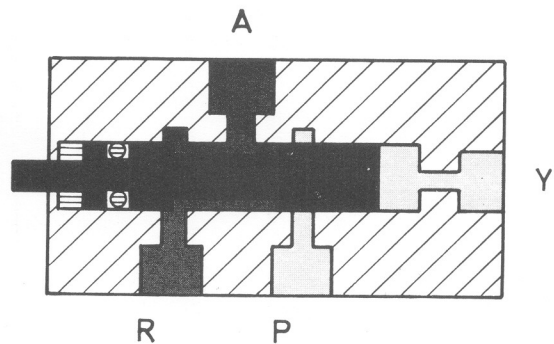
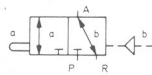
外力消失

Y又有氣壓信號時 P不通A  
 A通R

1.

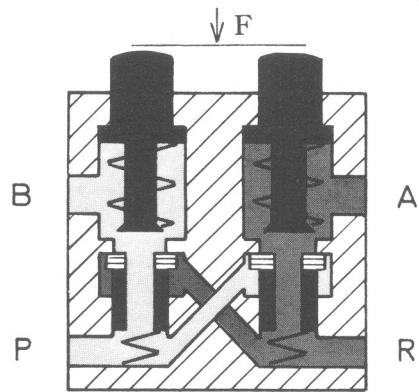
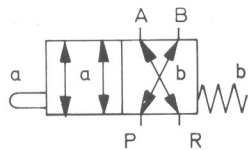


2.



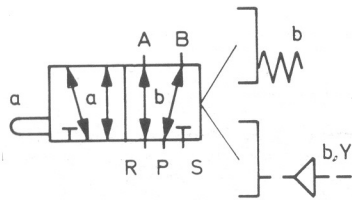
## 4.2 機械式氣壓閥

4/2 - 閥



靜止時，P通B，A通R  
加外力F，P通A，B通R

5/2 - 閥



### 1. 彈簧回位

靜止時，P通B，A通R  
加外力F P通A，B通S

### 2. 氣壓回位

加外力F，P通A，B通S  
外力消失，  
Y又有氣壓信號時，P通B  
，A通R

