

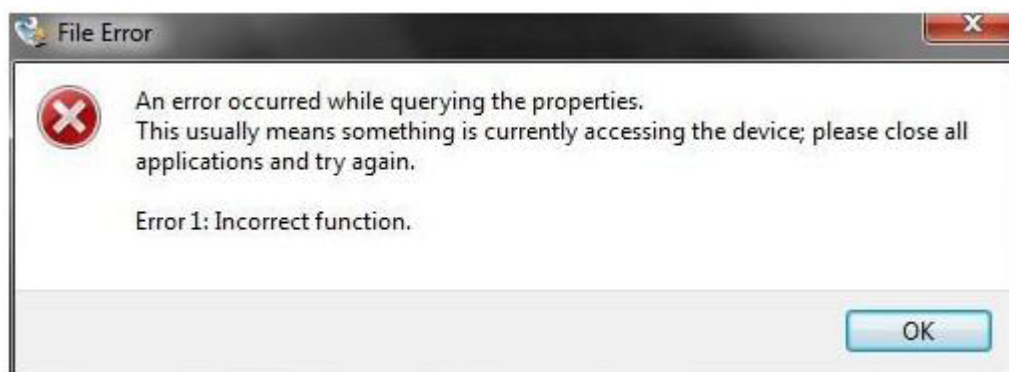
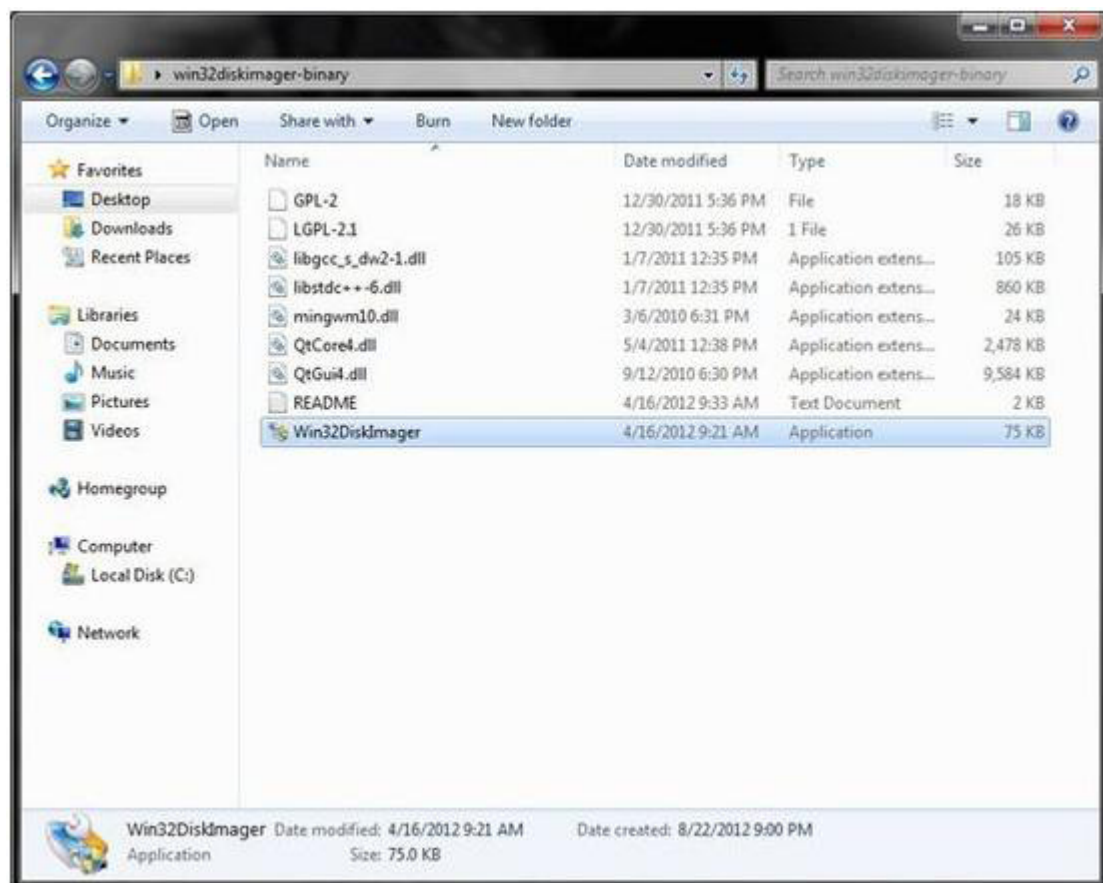
Writing IMG files to SD Card

For Windows System Users:

1: Here is what we provided in our DVD:

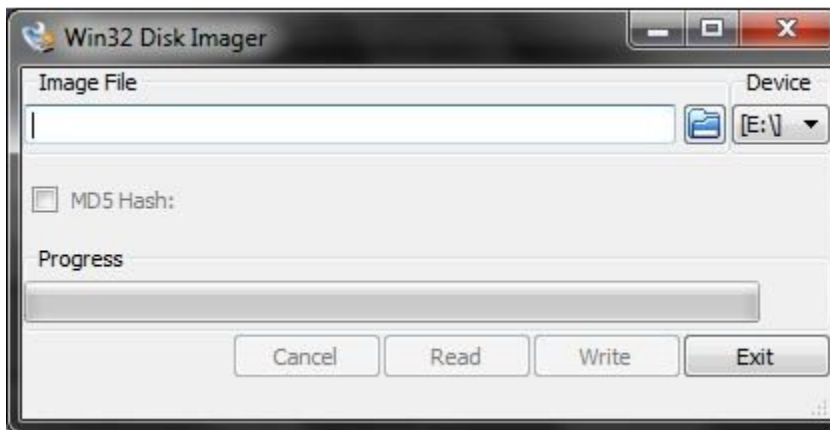
document	2014/8/15 16:30
IMAGE	2014/8/6 10:31
schematic	2014/8/6 11:27
software	2014/8/6 10:34

2.Open: Software\Win32DiskImager\Win32DiskImager.exe

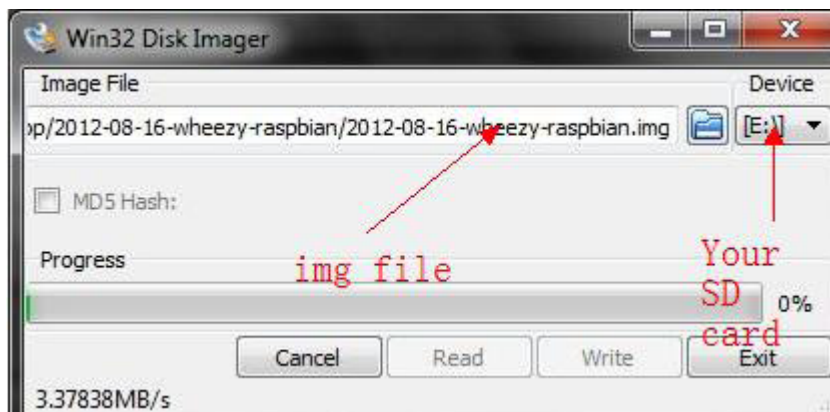


(In win7 , it might popup view ,then click “OK”)

3. Select the img files, and choose your SD Device:



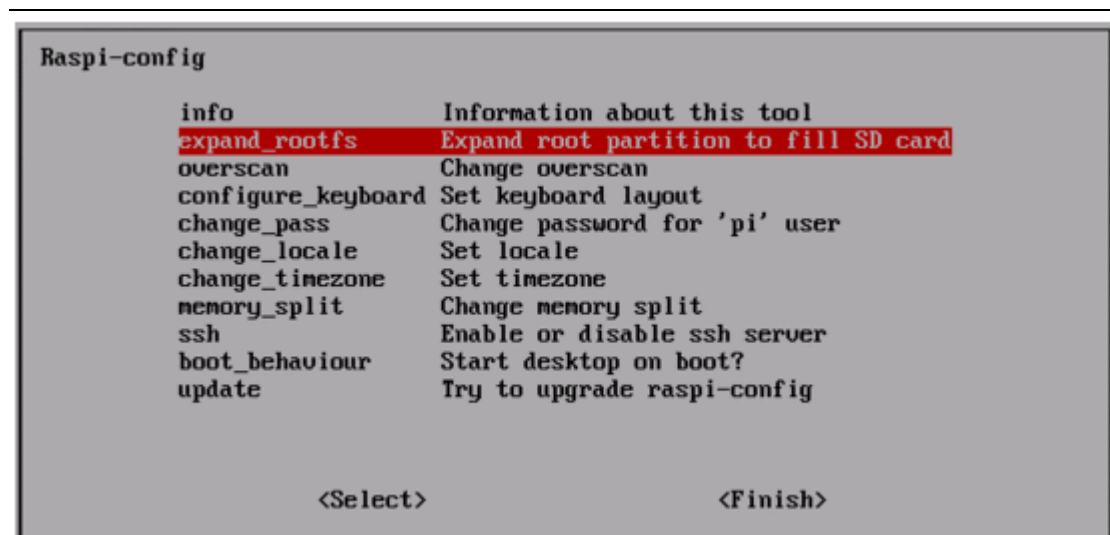
Like this:



4、 then write it, after it complete, it will pop up tips.



5、 then you can boot Raspberry pi ,and begin to set up the system.



More details: