



■ Company Data

P	4	Overview
P	5	History
P	6	Stock Information

■ Financial Data

P	8	Financial Results
P	9	Key Financial Results
P	10	Policy on Valuation
P	11	Financial Results for Each of Segments
P	12	Financial Results for Each of Websites
P	13	Quarterly Financial Results
P	14	Quarterly Financial Results for Each of Websites
P	15-16	Balance Sheets
P	17	Profit and loss statements
P	18-19	Cash flow statements



■ Overview



【 Name 】	en-japan inc.
【 Establishment 】	January 14, 2000
【 Representative 】	Michikatsu Ochi (Chairman) / Takatsugu Suzuki (President)
【 Headquarters 】	Shinjuku I-land Tower, 6-5-1 Nishi-Shinjuku, Shinjuku-ku, Tokyo
【 Total Stockholder's Equity 】	JPY 14,064 million (as of end of Dec. 2009)
【Stock Listing 】	Nippon New Market "Hercules"
【Fiscal Year 】	January 1 – December 31
【 Number of Employees 】	634 (as of end of Dec. 2009)
【 Number of Outstanding Shares】	245,624 (as of end of Dec. 2009)
【 Business Description 】	(1) Internet job recruitment service (2) Consultation on recruitment, employee education and personnel evaluation system

History



1995	Feb	Established Digital Media division in Nihon Brain Center Co., Ltd.
	Jul	Set up the new graduate and mid-career recruitment site, [en] employment net
2000	Jan	Spun off Digital Media division of Nihon Brain Center Co., Ltd. Established en-japan inc.
	Feb	Set up the collective site for job placement agencies, [en] Career Change Consultant
	Jul	Set up collective temporary staff services site, [en] Temporary Placement Info for the Tokyo metropolitan area
2001	Jun	Listed on NASDAQ Japan Market of Osaka Securities Exchange
2002	Aug	Started first video service in the industry
2003	Oct	en-japan wins court case recognizing copyrights of its contents, an industry first!
2004	Jun	Integrated Nihon Brain Center Co., Ltd.'s new graduate recruitment, education and evaluation business
2005	Feb	Opened a dedicated site to casual positions that can be upgraded to full-time positions, [en] Part-time Jobs Plus
2006	Jul	We invest in "Talent (Beijing) Alliance Technology Development, a Chinese Internet job site company, our first step in our overseas business expansion strategy
2007	Jul	[en] Career Change Info was selected as the No.1 site for the overall rating in "Career Change Job Site Survey 2007."
	Nov	Renewed the [en] Temporary Placement Info site.
2008	Feb	Launched "[en] Part-time Jobs" a site which offers comprehensive information on part-time jobs.
	May	"[en] Career Change Info Mobile " Released.
	Jul	[en] Career Change Info was selected as the No.1 site for the overall rating in "Career Change Job Site Survey 2008." [en] Temporary Placement Info was Selected as No.1 as to User Satisfaction in the part time worker survey 3times in a row.
2009	Feb	We form a business alliance with REVIC Global Co., Ltd.
	Mar	We form a capital tie-up with Relo Holdings, Inc.
	Jul	We form a business alliance with Wilson Learning Worldwide
		Opened NTT DoCoMo's official fee-based mobile site "Working Mobile"
		We form a capital and business alliance with Pharma Network Co., Ltd.
	Sep	We form a capital and business alliance with Lacras Corporation for launch of SaaS-type Personnel Outsourcing Business.
	Oct	Began pre-launch activities for "[en] College" corporate members-only business training course.
	Dec	We launched a wedding hall information site "[en] Green Wedding"

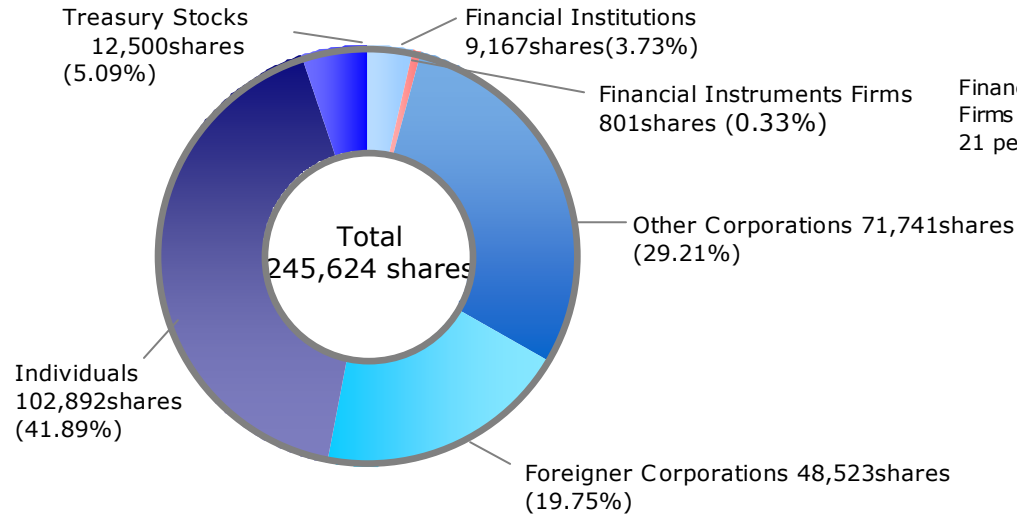
This material is for informational purpose only. You are fully responsible for the final decision to invest in the company. The statements included in these documents that are not historical facts are forward-looking statements which reflect management's current views with respect to certain future events and financial performance of the company. The company makes no guarantee or promise as to the accuracy or completeness of the information provided here and shall not be liable for any errors or delays in the content, or for any actions taken in reliance thereon. The content is subject to change without notice hereon.

Stock Information

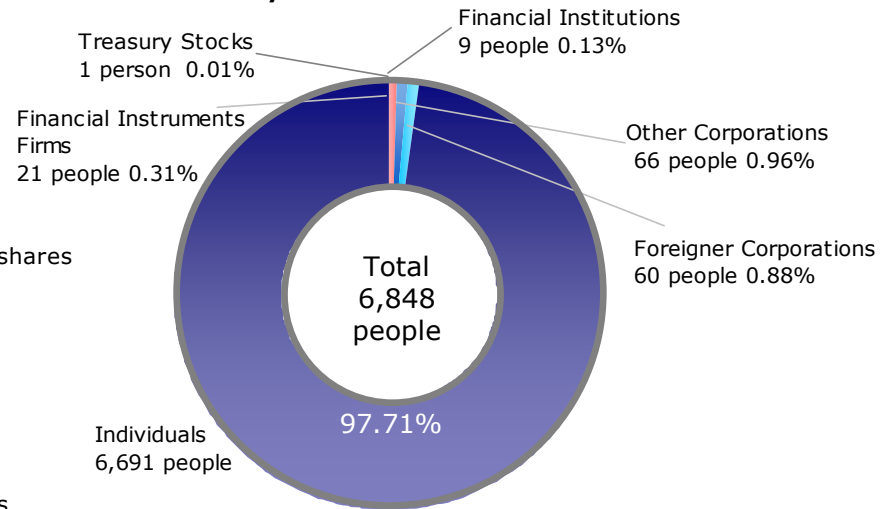


Stock Information	2000	2001	2002	2003	2004	2005	2006	2007	2008	2009
Shares outstanding at fiscal year-end (including treasury stock)	1,375	6,500	19,500	118,115	238,909	240,490	241,812	242,956	245,338	245,624
Average number of shares outstanding during the period	1,154	5,053	17,719	117,130	237,478	239,341	240,908	242,231	238,167	233,828

■ Number of Shares Categorized by Nature of Shareholder (Shareholding Ratio)



■ Number of Shareholders Categorized by Nature of Shareholder



Number of Shares Categorized by Nature of Shareholder (Shareholding Ratio)	2000	2001	2002	2003	2004	2005	2006	2007	2008	2009
Financial Institutions	20(1.45%)	764(11.75%)	3,002(15.40%)	15,750(13.33%)	39,779(16.65%)	33,575(13.96%)	34,171(14.13%)	20,598(8.48%)	6,285(2.56%)	9,167(3.73%)
Financial Instruments Firms	—	3(0.05%)	27(0.14%)	158(0.13%)	310(0.13%)	474(0.20%)	1,776(0.74%)	2,188(0.90%)	1,145(0.47%)	801(0.33%)
Other Corporations	367(26.69%)	1,528(23.51%)	4,403(22.58%)	25,768(21.82%)	53,075(22.22%)	59,641(24.80%)	72,929(30.16%)	72,622(29.89%)	72,507(29.55%)	71,741(29.21%)
Foreigner Corporations	—	191(2.94%)	1,071(5.49%)	9,920(8.4%)	29,533(12.36%)	39,573(16.45%)	38,312(15.84%)	51,300(21.11%)	48,369(19.72%)	48,523(19.75%)
Individuals	988(71.85%)	4,014(61.75%)	10,997(56.39%)	66,519(56.32%)	116,212(48.64%)	107,227(44.59%)	94,624(39.13%)	96,248(39.62%)	110,032(44.85%)	102,892(41.89%)
Treasury Stocks	—	—	—	—	—	—	—	—	7,000(2.85%)	12,500(5.09%)
Total	1,375	6,500	19,500	118,115	238,909	240,490	241,812	242,956	245,338	245,624

Number of Shareholders Categorized by Nature of Shareholder	2000	2001	2002	2003	2004	2005	2006	2007	2008	2009
Financial Institutions	2	9	13	14	16	15	16	17	12	9
Financial Instruments Firms	—	1	1	9	12	10	23	27	18	21
Other Corporations	7	10	26	54	37	57	77	67	73	66
Foreigner Corporations	—	4	9	23	47	79	87	87	67	60
Individuals	15	110	1,503	3,693	3,644	5,103	6,652	6,806	8,127	6,691
Treasury Stocks	—	—	—	—	—	—	—	—	1	1
Total	24	134	1,552	3,793	3,756	5,264	6,855	7,004	8,298	6,848

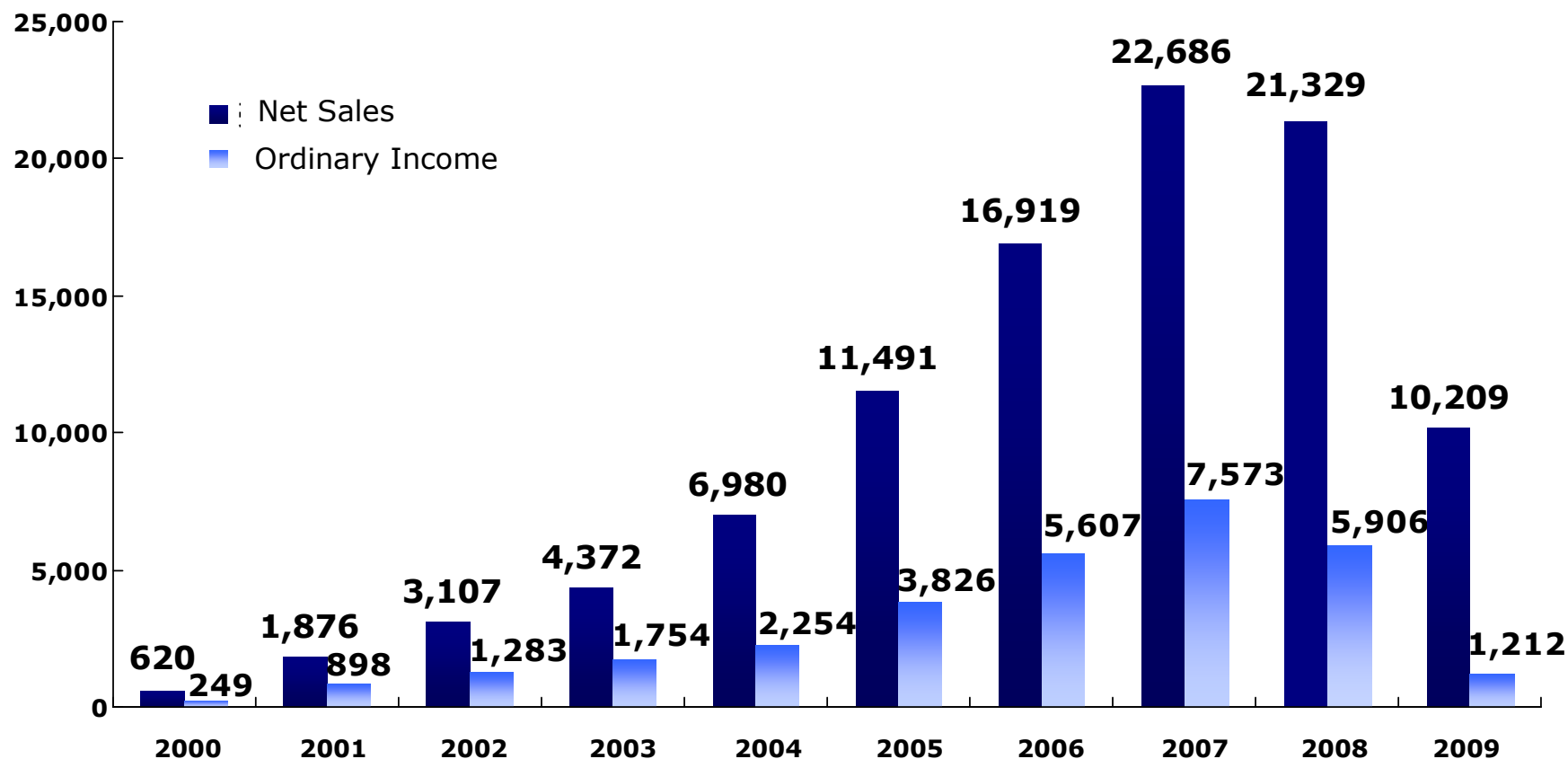
This material is for informational purpose only. You are fully responsible for the final decision to invest in the company. The statements included in these documents that are not historical facts are forward-looking statements which reflect management's current views with respect to certain future events and financial performance of the company. The company makes no guarantee or promise as to the accuracy or completeness of the information provided here and shall not be liable for any errors or delays in the content, or for any actions taken in reliance thereon. The content is subject to change without notice hereon.



■ Financial Results



(Millions of Yen)



(Millions of Yen)

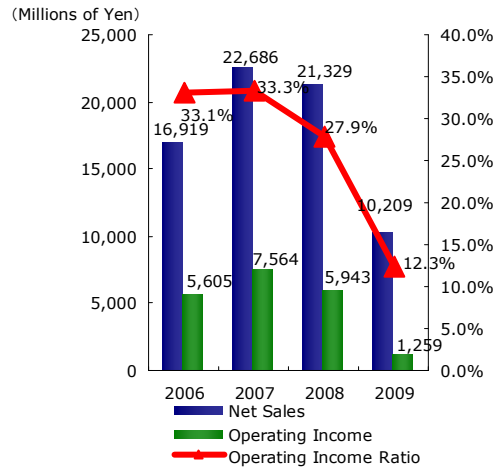
	2000	2001	2002	2003	2004	2005	2006	2007	2008	2009
Net Sales	620	1,876	3,107	4,372	6,980	11,491	16,919	22,686	21,329	10,209
Ordinary Income	249	898	1,283	1,754	2,254	3,826	5,607	7,573	5,906	1,212

This material is for informational purpose only. You are fully responsible for the final decision to invest in the company. The statements included in these documents that are not historical facts are forward-looking statements which reflect management's current views with respect to certain future events and financial performance of the company. The company makes no guarantee or promise as to the accuracy or completeness of the information provided here and shall not be liable for any errors or delays in the content, or for any actions taken in reliance thereon. The content is subject to change without notice hereon.

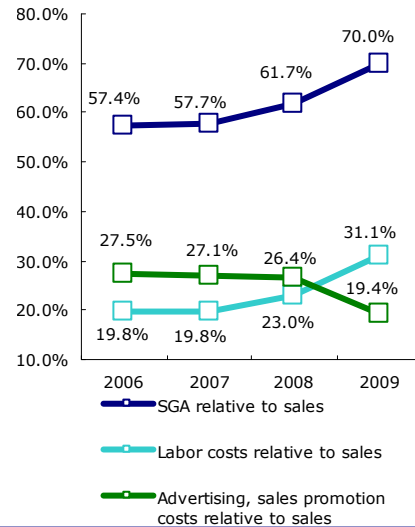
Key Financial Results



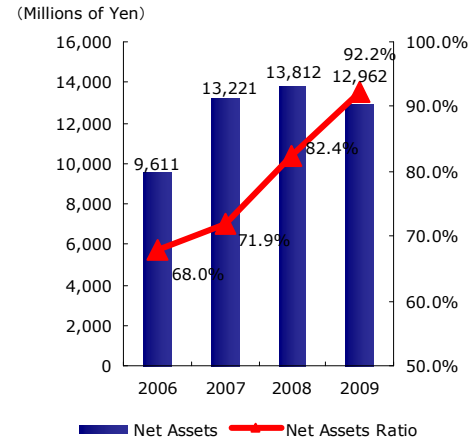
**Net Sales·Operating Income·
Operating Income Ratio**



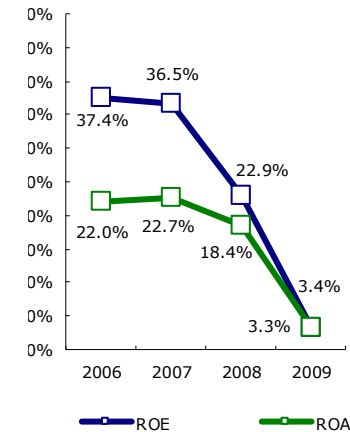
**SGA relative to sales·Labor costs relative to sales·
Advertising, sales promotion costs relative to sales**



Net Assets·Net Assets Ratio



ROE·ROA

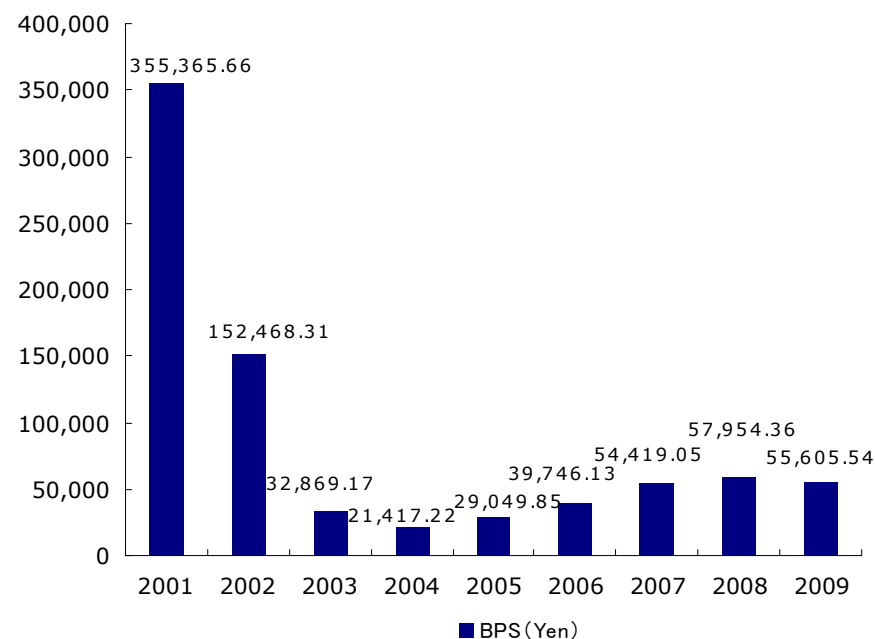
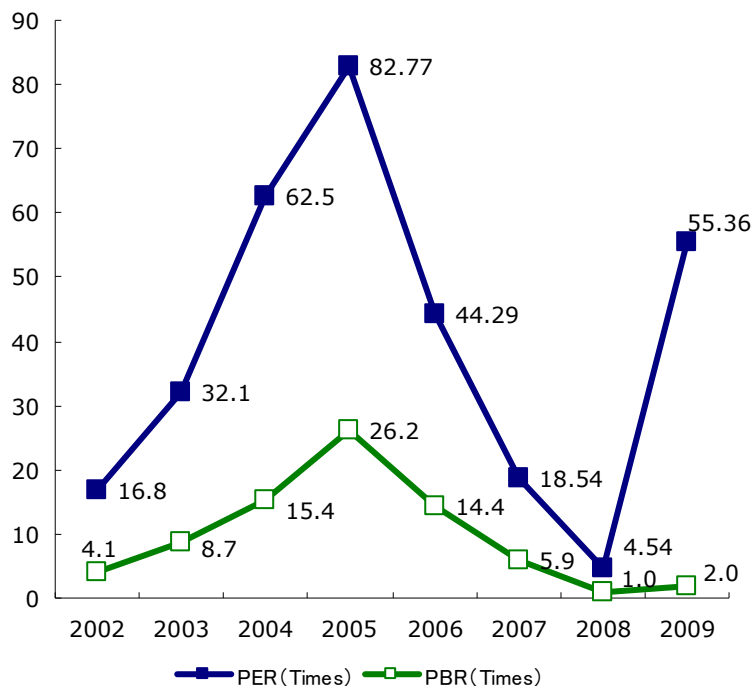


(Millions of Yen)

Main management indexes	2000	change	2001	change	2002	change	2003	change	2004	change	2005	change	2006	change	2007	change	2008	change	2009	change
Net Sales	620	—	1,876	202.6%	3,107	65.6%	4,372	40.7%	6,980	59.7%	11,491	64.6%	16,919	47.2%	22,686	34.1%	21,329	-6.0%	10,209	-52.1%
Sales amount gross profit ratio	98.3%	—	98.6%	0.3pt	98.2%	-0.4pt	95.3%	-2.9pt	91.8%	-3.5pt	90.5%	-1.3pt	90.5%	0.0pt	91.0%	0.5pt	89.5%	-1.5pt	82.3%	-7.2%
Sales, General and Administrative Expenses	355	—	917	158.3%	1,747	90.5%	2,418	38.4%	4,163	72.2%	6,603	58.6%	9,710	47.1%	13,088	34.8%	13,155	0.5%	7,144	-45.7%
SGA relative to sales	57.3%	—	48.9%	-8.4pt	56.2%	7.3pt	55.3%	-0.9pt	59.6%	4.3pt	57.5%	-2.1pt	57.4%	-0.1pt	57.7%	0.3pt	61.7%	4.0pt	70.0%	8.3pt
Labor costs relative to sales	18.3%	—	16.1%	-2.2pt	15.0%	-1.1pt	14.5%	-0.5pt	17.7%	3.2pt	17.5%	-0.2pt	19.8%	2.3pt	19.8%	0.0pt	23.0%	3.2pt	31.1%	8.1pt
Advertising, sales promotion costs relative to sales	22.1%	—	22.8%	0.7pt	22.8%	0.0pt	25.8%	3.0pt	29.9%	4.1pt	29.4%	-0.5pt	27.5%	-1.9pt	27.1%	-0.4pt	26.4%	0.7pt	19.4%	-7.0pt
Operating Income	254	—	933	267.3%	1,305	39.9%	1,749	34.0%	2,245	28.4%	3,791	68.9%	5,605	47.9%	7,564	35.0%	5,943	-21.4%	1,259	-78.8%
Operating income ratio	41.0%	—	49.7%	8.7pt	42.0%	-7.7pt	40.0%	-2.0pt	32.2%	-7.8pt	33.0%	0.8pt	33.1%	0.1pt	33.3%	0.2pt	27.9%	-5.4pt	12.3%	-15.6pt
Ordinary Income	249	—	898	260.6%	1,283	42.9%	1,754	36.7%	2,254	28.5%	3,826	69.7%	5,607	46.5%	7,573	35.1%	5,906	-22.0%	1,212	-79.5%
Ordinary Income ratio	40.2%	—	47.8%	7.6pt	41.3%	-6.5pt	40.1%	-1.2pt	32.3%	-7.8pt	33.3%	1.0pt	33.1%	-0.2pt	33.4%	0.3pt	27.7%	-5.7pt	11.9%	-15.8pt
Net Income	132	—	464	251.5%	663	42.9%	1,038	56.6%	1,253	20.7%	2,203	75.8%	3,105	40.9%	4,168	34.2%	3,090	-25.9%	459	-85.1%
Net Income ratio	21.4%	—	24.7%	3.3pt	21.3%	-3.4pt	23.8%	2.5pt	18.0%	-5.8pt	19.2%	1.2pt	18.4%	-0.8pt	18.4%	0.0pt	14.5%	-3.9pt	4.5%	-10.0pt
Total Assets	957	—	2,772	189.7%	3,712	33.9%	4,710	26.9%	7,067	50.0%	9,949	40.8%	14,129	42.0%	18,382	30.1%	16,769	-8.8%	14,064	-16.1%
ROA	13.8%	—	16.7%	2.9pt	17.9%	1.2pt	22.0%	4.1pt	17.7%	-4.3pt	22.1%	4.4pt	22.0%	-0.1pt	22.7%	0.7pt	18.4%	-4.3pt	3.3%	-15.1pt
ROI	50.7%	—	48.2%	-2.5pt	39.6%	-8.6pt	41.7%	2.1pt	38.3%	-3.4pt	45.0%	6.7pt	46.6%	1.6pt	46.6%	0.0pt	33.6%	-13.0pt	7.9%	-25.7pt
Net Assets (Owners' Equity)	717	—	2,309	222.0%	2,973	28.8%	3,882	30.6%	5,116	31.8%	6,986	36.6%	9,611	37.6%	13,221	37.6%	13,812	4.5%	12,962	-6.2pt
Net Asset Ratio	74.9%	—	83.3%	8.4pt	80.1%	-3.2pt	82.4%	2.3pt	72.4%	-10.0pt	70.2%	-2.2pt	68.0%	-2.2pt	71.9%	3.9pt	82.4%	10.5pt	92.2%	9.8pt
ROE	18.5%	—	30.7%	12.2pt	25.1%	-5.6pt	30.3%	5.2pt	27.9%	-2.4pt	36.4%	8.5pt	37.4%	1.0pt	36.5%	-0.9pt	22.9%	-13.6pt	3.4%	-19.5pt
Employee	38	—	72	89.5%	103	43.1%	179	73.8%	374	108.9%	538	43.9%	879	63.4%	1,138	29.5%	1,094	-3.9%	634	-42.0%

This material is for informational purpose only. You are fully responsible for the final decision to invest in the company. The statements included in these documents that are not historical facts are forward-looking statements which reflect management's current views with respect to certain future events and financial performance of the company. The company makes no guarantee or promise as to the accuracy or completeness of the information provided here and shall not be liable for any errors or delays in the content, or for any actions taken in reliance thereon. The content is subject to change without notice hereon.

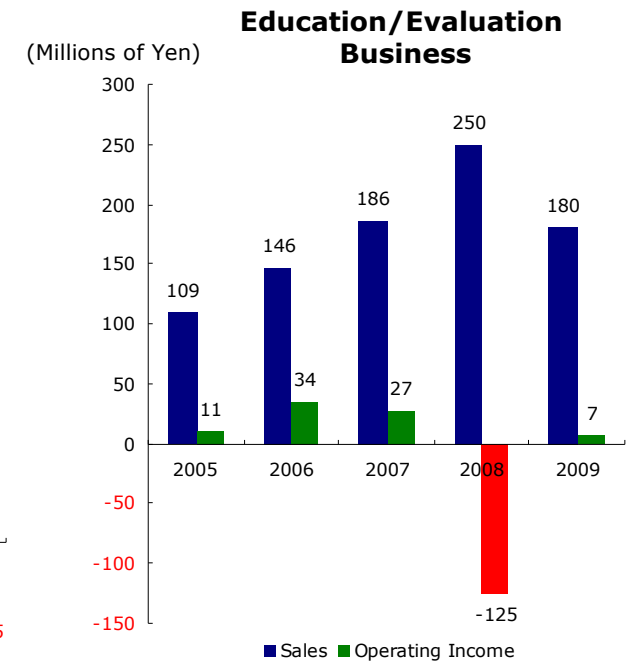
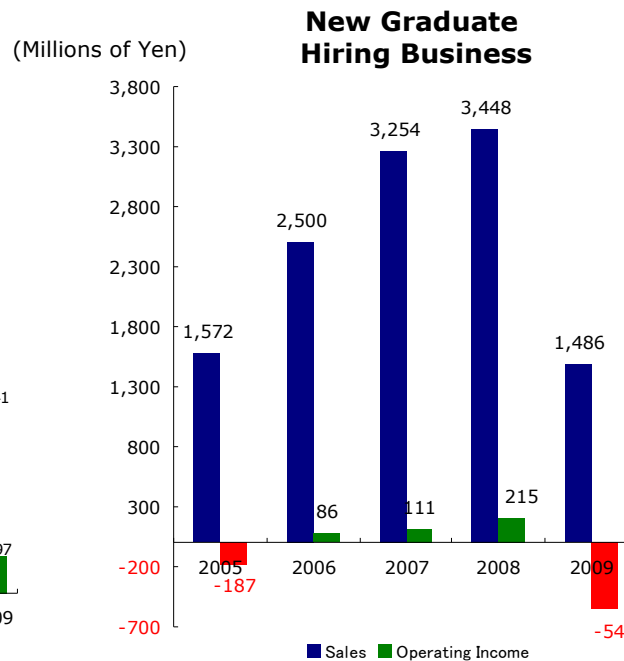
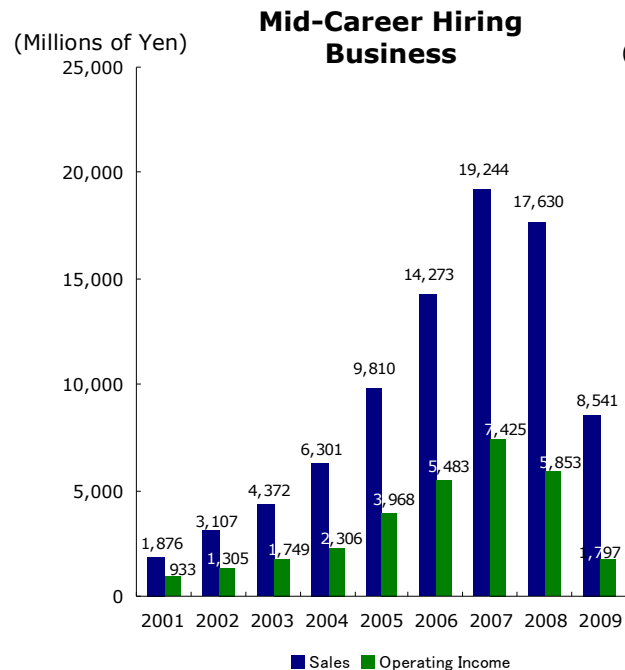
■ Policy on Valuation



	2000	2001	2002	2003	2004	2005	2006	2007	2008	2009
BPS(Yen)	521,884.91	355,365.66	152,468.31	32,869.17	21,417.22	29,049.85	39,746.13	54,419.05	57,954.36	55,605.54
EPS(Yen)	114,897.53	91,883.04	37,431.87	8,868.57	5,277.44	9,205.85	12,892.66	17,209.57	12,977.66	1,965.24
Dividends(Yen)	—	—	10,000	2,500	1,500	2,300	3,100	4,100	4,100	800
Payout Ratio (%)	—	—	26.7	28.2	28.4	25.0	24.0	23.8	31.6	40.7
Stock Price(Yen)	—	829,000	630,000	285,000	330,000	762,000	571,000	319,000	58,900	108,800
PER(Times)	—	9.0	16.8	32.1	62.5	82.77	44.29	18.54	4.54	55.36
PBR(Times)	—	2.3	4.1	8.7	15.4	26.2	14.4	5.9	1.0	2.0

This material is for informational purpose only. You are fully responsible for the final decision to invest in the company. The statements included in these documents that are not historical facts are forward-looking statements which reflect management's current views with respect to certain future events and financial performance of the company. The company makes no guarantee or promise as to the accuracy or completeness of the information provided here and shall not be liable for any errors or delays in the content, or for any actions taken in reliance thereon. The content is subject to change without notice hereon.

Financial Results for Each of Segments



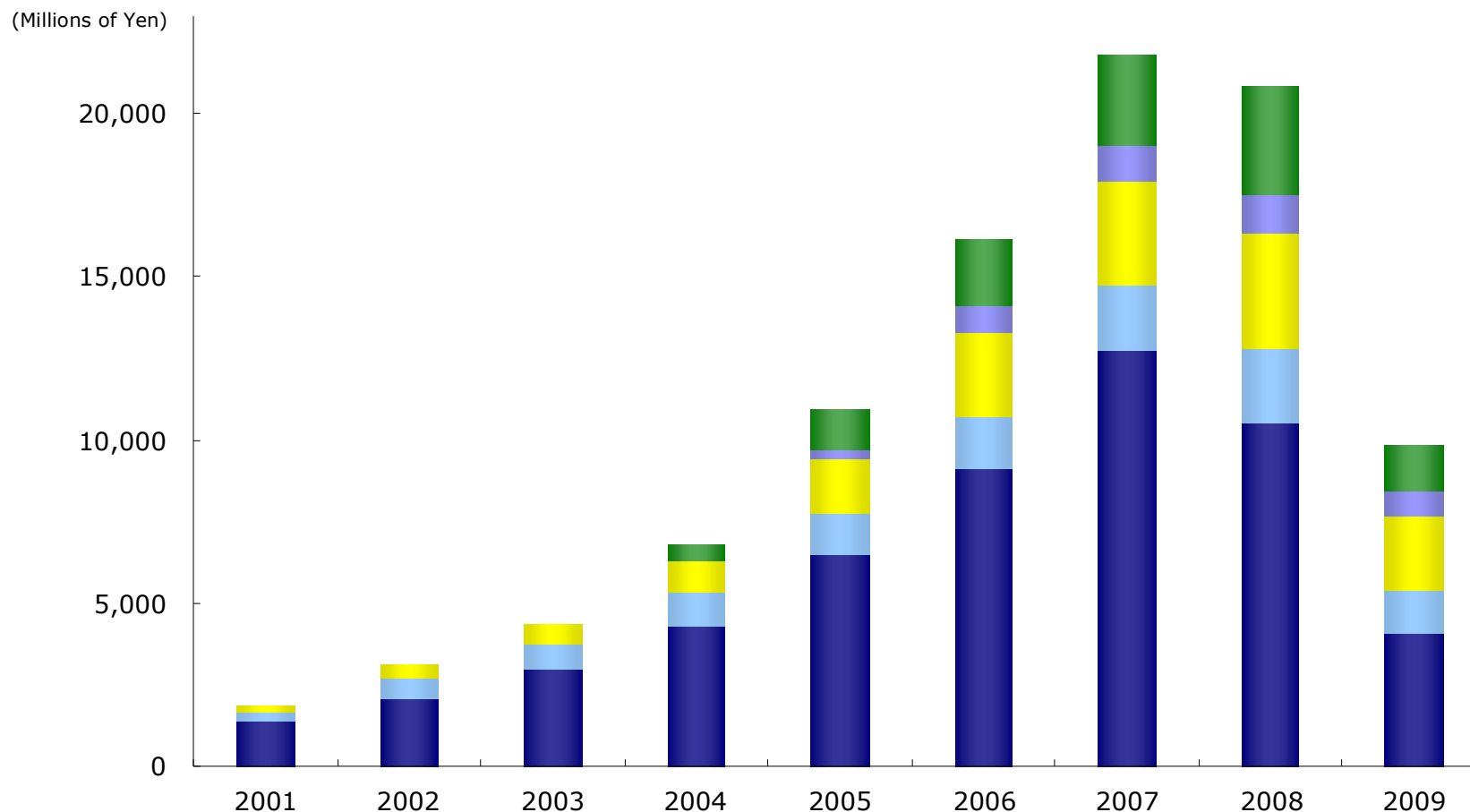
Mid-Career Hiring Business	2001	Change	2002	Change	2003	Change	2004	Change	2005	Change	2006	Change	2007	Change	2008	Change	2009	Change
Sales	1,876	202.6%	3,107	65.6%	4,372	40.7%	6,301	44.1%	9,810	55.7%	14,273	45.5%	19,244	34.8%	17,630	-8.4%	8,541	-51.6%
Operating Income	933	267.3%	1,305	39.9%	1,749	34.0%	2,306	31.8%	3,968	72.1%	5,483	38.2%	7,425	35.4%	5,853	-21.2%	1,797	-69.3%
Operating Income Ratio	49.7%	8.7pt	42.0%	-7.7pt	40.0%	-2.0pt	36.6%	-3.4pt	40.4%	3.8pt	38.4%	-2.4pt	38.6%	0.2pt	33.2%	5.4pt	21.0%	-12.2pt
Employee	72	89.5%	103	43.1%	179	73.8%	247	38.0%	363	47.0%	636	75.2%	836	31.4%	828	-1.0%	499	-39.7%

New Graduate Hiring Business	2001	Change	2002	Change	2003	Change	2004	Change	2005	Change	2006	Change	2007	Change	2008	Change	2009	Change
Sales	—	—	—	—	—	—	636	—	1,572	147.2%	2,500	59.0%	3,254	30.2%	3,448	5.9%	1,486	-56.9%
Operating Income	—	—	—	—	—	—	-62	—	-187	—	86	—	111	27.7%	215	94.2%	-545	—
Operating Income Ratio	—	—	—	—	—	—	-9.2%	—	-11.9%	-3.3pt	3.5%	15.4pt	3.4%	-0.1pt	6.3%	2.9pt	-36.7%	-43.0pt
Employee	—	—	—	—	—	—	118	—	166	40.7%	230	38.6%	282	22.6%	248	-12.1%	116	-53.2%

Education/Evaluation Business	2001	Change	2002	Change	2003	Change	2004	Change	2005	Change	2006	Change	2007	Change	2008	Change	2009	Change
Sales	—	—	—	—	—	—	42	—	109	159.5%	146	33.9%	186	27.4%	250	34.4%	180	-28.0%
Operating Income	—	—	—	—	—	—	—	—	11	—	34	209.1%	27	-20.6%	-125	—	7	—
Operating Income Ratio	—	—	—	—	—	—	—	—	10.1%	—	23.5%	13.4pt	14.8%	-8.7pt	-50.2%	-65.0pt	4.3%	54.5pt
Employee	—	—	—	—	—	—	9	—	9	0.0%	13	44.4%	20	53.8%	20	0.0%	19	-5.0%

This material is for informational purpose only. You are fully responsible for the final decision to invest in the company. The statements included in these documents that are not historical facts are forward-looking statements which reflect management's current views with respect to certain future events and financial performance of the company. The company makes no guarantee or promise as to the accuracy or completeness of the information provided here and shall not be liable for any errors or delays in the content, or for any actions taken in reliance thereon. The content is subject to change without notice hereon.

■ Financial Results for Each of Websites



■ [en] Career Change Info ■ [en] Career Change Consultant ■ [en] Temporary Placement Info ■ [en] Part-Time Jobs ■ [en] Job Info for Students

(Millions of Yen)

Sales	2001	Change	2002	Change	2003	Change	2004	Change	2005	Change	2006	Change	2007	Change	2008	Change	2009	Change
[en] Career Change Info	1,406	188.1%	2,094	48.9%	2,960	41.4%	4,307	45.5%	6,520	51.4%	9,174	40.7%	12,737	38.8%	10,558	-17.1%	4,066	-61.5%
[en] Career Change Consultant	291	185.3%	636	118.6%	807	26.9%	1,010	25.2%	1,208	19.6%	1,557	28.9%	2,042	31.1%	2,248	10.1%	1,346	-40.1%
[en] Temporary Placement Info	179	517.2%	376	110.1%	605	60.9%	982	62.3%	1,694	72.5%	2,556	50.9%	3,181	24.5%	3,568	12.2%	2,304	-35.4%
[en] Part-Time Jobs	—	—	—	—	—	—	—	—	299	—	838	180.3%	1,105	31.9%	1,165	5.4%	746	-36.0%
[en] Job Info for Students	—	—	—	—	—	—	500	—	1,254	150.8%	2,051	63.6%	2,751	34.1%	3,328	21.0%	1,396	-58.0%

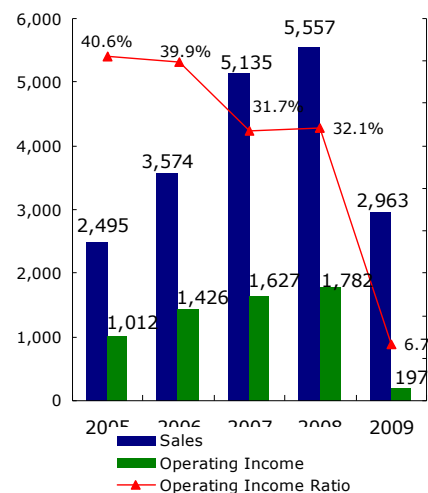
This material is for informational purpose only. You are fully responsible for the final decision to invest in the company. The statements included in these documents that are not historical facts are forward-looking statements which reflect management's current views with respect to certain future events and financial performance of the company. The company makes no guarantee or promise as to the accuracy or completeness of the information provided here and shall not be liable for any errors or delays in the content, or for any actions taken in reliance thereon. The content is subject to change without notice hereon.

Quarterly Financial Results



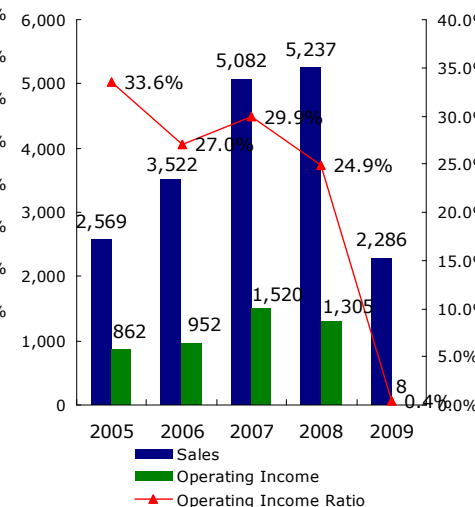
1st quarter

(Millions of Yen)



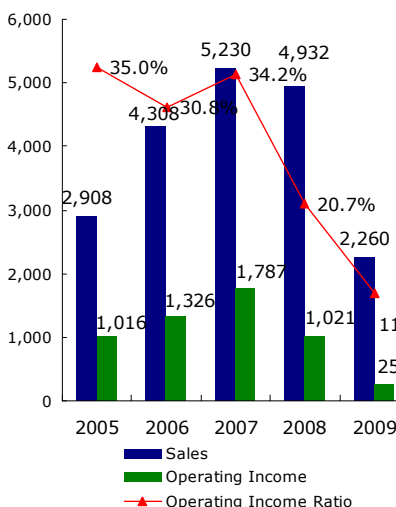
2nd quarter

(Millions of Yen)



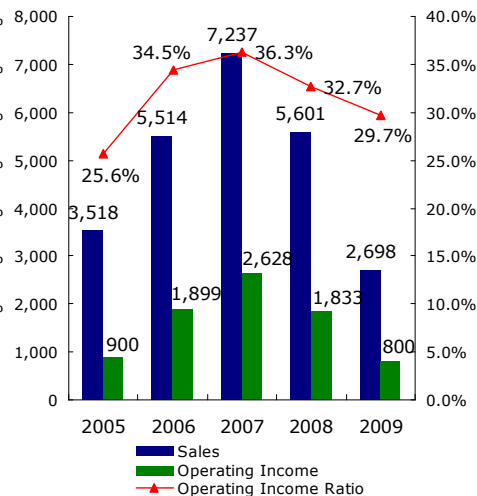
3rd quarter

(Millions of Yen)



4th quarter

(Millions of Yen)



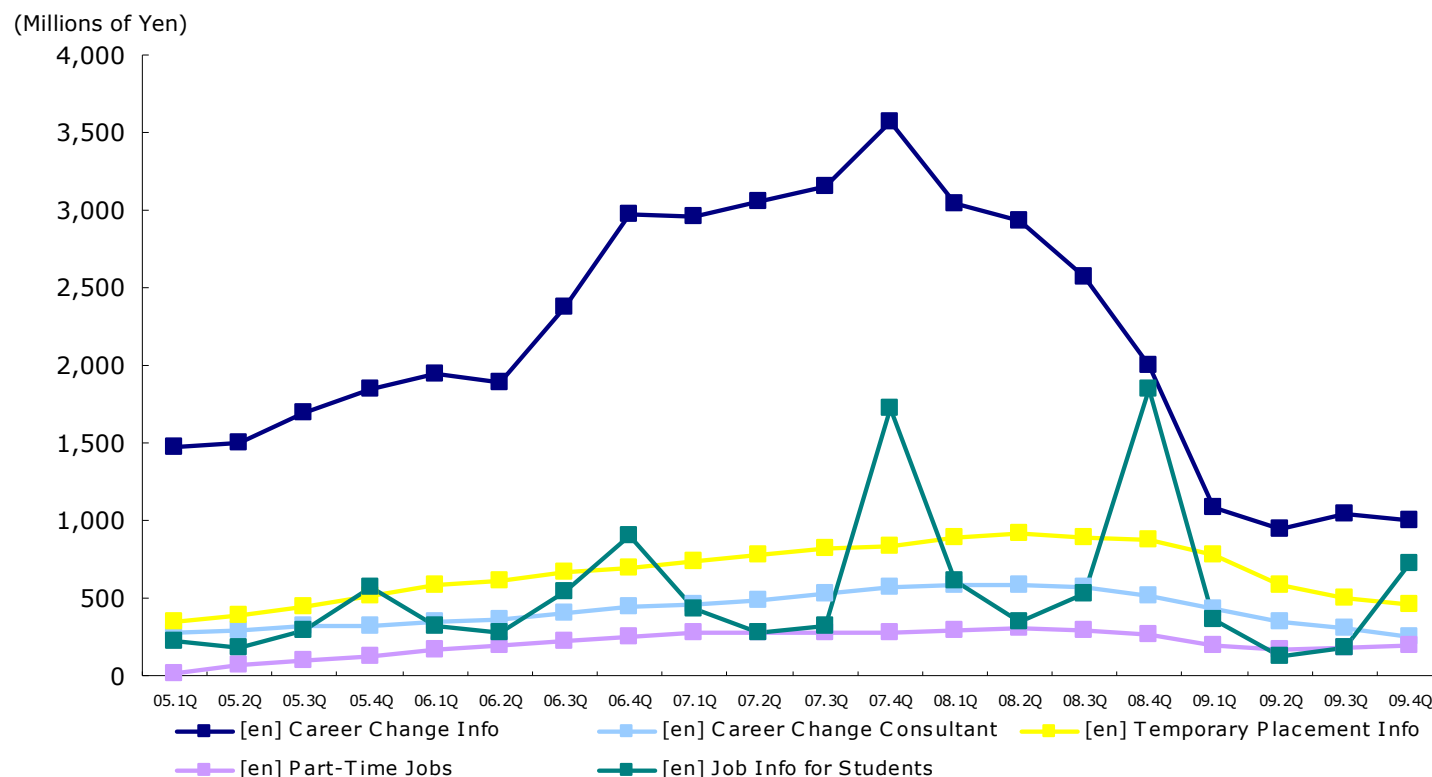
(Millions of Yen)

Quarter Segment Performance	2005				2006				2007				2008				2009			
	1Q	2Q	3Q	4Q	1Q	2Q	3Q	4Q	1Q	2Q	3Q	4Q	1Q	2Q	3Q	4Q	1Q	2Q	3Q	4Q
Sales	2,495	2,569	2,908	3,518	3,574	3,522	4,308	5,514	5,135	5,082	5,230	7,237	5,557	5,237	4,932	5,601	2,963	2,286	2,260	2,698
Operating Income	1,012	862	1,016	900	1,426	952	1,326	1,899	1,627	1,520	1,787	2,628	1,782	1,305	1,021	1,833	197	8	253	800
Operating Income Ratio	40.6%	33.6%	35.0%	25.6%	39.9%	27.0%	30.8%	34.5%	31.7%	29.9%	34.2%	36.3%	32.1%	24.9%	20.7%	32.7%	6.7%	0.4%	11.2%	29.7%
Ordinary Income	1,012	871	1,026	915	1,429	932	1,338	1,906	1,634	1,538	1,782	2,618	1,763	1,311	1,039	1,791	186	10	232	757
Income before Taxes and Adjustments	1,012	856	951	990	1,423	926	1,338	1,902	1,630	1,533	1,774	2,389	1,754	765	1,039	1,777	186	-291	132	758
Net Income	576	414	528	683	794	449	879	982	907	803	1,059	1,397	998	469	588	1,035	110	-197	77	469

Change	2005				2006				2007				2008				2009			
	1Q	2Q	3Q	4Q	1Q	2Q	3Q	4Q	1Q	2Q	3Q	4Q	1Q	2Q	3Q	4Q	1Q	2Q	3Q	4Q
Sales	95.1%	76.1%	56.2%	47.8%	43.2%	37.1%	48.1%	56.7%	43.7%	44.3%	21.4%	31.2%	8.2%	3.1%	-5.7%	-22.6%	-46.7%	-56.3%	-54.2%	-51.8%
Operating Income	85.7%	148.2%	71.9%	18.3%	40.9%	10.5%	30.5%	111.0%	14.1%	59.6%	34.8%	38.3%	9.5%	-14.1%	-42.9%	-30.3%	-88.9%	-99.4%	-75.1%	-56.3%
Ordinary Income	85.5%	149.7%	72.8%	19.6%	41.1%	7.0%	30.5%	108.3%	14.4%	64.9%	33.1%	37.3%	7.9%	-14.8%	-41.7%	-31.6%	-89.4%	-99.2%	-77.6%	-56.3%
Income before Taxes and Adjustments	85.5%	145.3%	60.2%	29.4%	40.5%	8.1%	40.7%	92.2%	14.5%	65.5%	32.5%	25.6%	7.6%	-50.1%	-41.4%	-25.6%	-89.4%	-	-87.3%	-57.4%
Net Income	78.0%	107.9%	52.2%	78.6%	37.9%	8.4%	66.4%	43.6%	14.2%	78.8%	20.5%	42.3%	10.0%	-41.6%	-44.5%	-6.6%	-89.0%	-	-86.8%	-54.7%

This material is for informational purpose only. You are fully responsible for the final decision to invest in the company. The statements included in these documents that are not historical facts are forward-looking statements which reflect management's current views with respect to certain future events and financial performance of the company. The company makes no guarantee or promise as to the accuracy or completeness of the information provided here and shall not be liable for any errors or delays in the content, or for any actions taken in reliance thereon. The content is subject to change without notice hereon.

■ Quarterly Financial Results for Each of Websites



Detail of Net Sales (Quarter)	2005				2006				2007				2008				2009			
	1Q	2Q	3Q	4Q	1Q	2Q	3Q	4Q	1Q	2Q	3Q	4Q	1Q	2Q	3Q	4Q	1Q	2Q	3Q	4Q
[en] Career Change Info	1,478	1,502	1,694	1,844	1,942	1,890	2,369	2,972	2,964	3,052	3,147	3,573	3,045	2,936	2,572	2,003	1,086	941	1,040	997
[en] Career Change Consultant	273	292	317	324	344	365	406	439	463	492	522	563	582	581	563	520	433	352	302	256
[en] Temporary Placement Info	342	387	448	516	577	614	665	698	743	779	820	837	886	910	895	876	773	579	497	454
[en] Part-Time Jobs	17	64	93	124	169	193	218	256	272	275	282	275	294	310	289	270	201	170	182	192
[en] Job Info for Students	216	185	289	563	318	283	544	905	427	283	321	1,718	608	347	525	1,846	366	129	178	721

Change	2005				2006				2007				2008				2009			
	1Q	2Q	3Q	4Q	1Q	2Q	3Q	4Q	1Q	2Q	3Q	4Q	1Q	2Q	3Q	4Q	1Q	2Q	3Q	4Q
[en] Career Change Info	73.1%	61.3%	48.3%	33.7%	31.3%	25.8%	39.8%	61.1%	52.6%	61.5%	32.8%	20.2%	2.8%	-3.8%	-18.3%	-43.9%	-64.3%	-67.9%	-59.6%	-50.2%
[en] Career Change Consultant	21.3%	18.4%	20.6%	18.0%	26.2%	25.0%	28.0%	35.4%	34.4%	34.7%	28.5%	28.4%	25.8%	18.2%	7.7%	-7.7%	-25.6%	-39.4%	-46.2%	-50.7%
[en] Temporary Placement Info	71.6%	66.1%	75.8%	74.8%	68.8%	58.6%	48.5%	35.3%	28.7%	26.8%	23.3%	19.9%	19.3%	16.7%	9.1%	4.7%	-12.8%	-36.4%	-44.5%	-48.1%
[en] Part-Time Jobs	—	—	—	—	857.3%	202.2%	134.8%	106.2%	60.5%	42.1%	29.2%	7.6%	8.2%	12.6%	2.6%	-1.8%	-31.6%	-45.0%	-37.1%	-29.0%
[en] Job Info for Students	—	1277.8%	101.4%	64.0%	46.9%	52.9%	88.1%	60.8%	34.2%	0.3%	-40.9%	89.9%	42.3%	22.3%	63.4%	7.5%	-39.8%	-62.9%	-66.0%	-60.9%

This material is for informational purpose only. You are fully responsible for the final decision to invest in the company. The statements included in these documents that are not historical facts are forward-looking statements which reflect management's current views with respect to certain future events and financial performance of the company. The company makes no guarantee or promise as to the accuracy or completeness of the information provided here and shall not be liable for any errors or delays in the content, or for any actions taken in reliance thereon. The content is subject to change without notice hereon.

■ Balance Sheets



(Thousand of Yen)

(Assets)	2000	2001	2002	2003	2004	2005	2006	2007	2008	2009
Current Assets										
Cash and Deposits	758,651	2,328,370	2,562,642	3,310,300	4,569,364	5,565,531	6,173,772	8,003,825	8,657,204	6,214,449
Notes Receivable	3,843	—	3,201	3,632	14,633	10,433	16,853	13,044	14,537	4,452
Accounts Receivable	137,798	276,022	467,759	523,264	990,165	1,473,310	2,275,791	2,639,824	2,016,797	975,941
Inventory	—	—	—	—	8,810	10,738	13,630	13,176	11,133	9,125
Prepaid Expense	3,089	9,433	19,237	15,302	50,869	163,666	224,044	246,081	295,050	159,437
Deferred Tax Assets	10,991	19,018	31,464	42,115	92,489	136,135	302,362	407,713	245,776	21,509
Other	695	326	42,394	2,382	11,112	25,546	31,598	23,014	45,228	1,335,421
Reserve for Bad Debt	-1,086	-5,363	-7,126	-7,133	-10,593	-16,626	-33,772	-21,849	-48,520	-13,844
Total Current Assets	913,983	2,627,807	3,119,574	3,889,866	5,726,851	7,368,735	9,004,281	11,324,829	11,237,207	8,706,494
Fixed Assets										
Tangible Fixed Assets										
Buildings	—	—	—	—	—	119,856	110,705	146,307	161,139	108,141
Building additional equipment	6,401	5,224	36,687	34,014	89,796	—	—	—	—	—
Structures	—	—	—	—	—	—	—	—	5,425	—
Equipment and Fixtures	5,360	13,090	71,074	176,642	195,017	597,749	515,356	505,003	376,782	407,550
Lease Assets	—	—	—	—	—	—	—	—	—	26,077
Construction in Progress	—	—	—	—	—	38,637	33,775	11,287	212,513	—
Total Tangible Fixed Assets	11,761	18,314	107,762	210,656	284,814	756,243	659,837	662,598	755,859	541,769
Intangible Fixed Assets										
Trademarks	—	338	1,983	2,051	2,140	3,090	4,165	5,831	5,390	4,823
Software	7,235	14,498	39,622	67,535	73,381	160,584	644,478	964,816	940,044	1,019,809
Software under Development	—	—	—	—	95,287	142,195	199,591	115,736	142,795	54,532
Telephone Subscription Rights	92	230	259	259	1,351	1,351	1,351	1,351	1,351	1,351
Total Intangible Fixed Assets	7,327	15,066	41,864	69,846	172,161	307,222	849,587	1,087,735	1,089,581	1,080,517
Investments and Other Assets										
Investment Securities	—	—	—	76,800	82,400	25,000	340,019	730,885	625,575	1,154,030
Stock in Affiliates	—	—	—	—	—	—	571,594	571,594	30,000	520,968
Claims in Bankruptcy	—	—	—	—	—	—	—	24,678	38,765	25,585
Long-Term Prepaid Expense	—	—	—	—	—	271,338	195,039	131,764	48,123	8,278
Deferred Tax Assets	3,317	6,692	15,230	1,072	43,038	91,749	94,294	191,028	439,702	332,359
Long-Term Deposits	—	—	150,000	150,000	150,000	384,140	1,388,220	2,578,300	1,350,000	1,350,000
Insurance Reserve	—	55,526	218,004	242,549	408,175	413,235	422,090	430,332	438,999	—
Deposit and Guarantees	21,443	48,863	60,038	69,692	199,930	331,890	604,378	672,996	712,598	338,954
Other	—	—	—	—	—	—	—	—	41,930	31,086
Reserve for Bad Debt	—	—	—	—	—	—	—	-24,678	-38,765	-25,585
Total Investments and Other Assets	24,760	111,082	443,272	540,115	883,545	1,517,355	3,615,637	5,306,901	3,686,929	3,735,678
Total Fixed Assets	43,850	144,464	592,900	820,618	1,340,520	2,580,821	5,125,062	7,057,235	5,532,371	5,357,965
Total Assets	957,833	2,772,271	3,712,474	4,710,485	7,067,372	9,949,557	14,129,344	18,382,065	16,769,578	14,064,460

This material is for informational purpose only. You are fully responsible for the final decision to invest in the company. The statements included in these documents that are not historical facts are forward-looking statements which reflect management's current views with respect to certain future events and financial performance of the company. The company makes no guarantee or promise as to the accuracy or completeness of the information provided here and shall not be liable for any errors or delays in the content, or for any actions taken in reliance thereon. The content is subject to change without notice hereon.

■ Balance Sheets



(Liabilities)	2000	2001	2002	2003	2004	2005	2006	2007	2008	2009
Current Liabilities										
Accounts Payable	761	588	6,530	2,907	12,542	62,730	79,979	72,564	131,022	38,226
Payments Due	68,562	141,246	268,624	322,316	705,511	1,023,714	1,459,616	1,484,451	1,014,703	552,473
Lease Liabilities										12,190
Accrued Expense	11,485	17,631	30,216	65,381	160,319	69,748	309,229	215,929	185,749	82,955
Corporate Taxes Payable	130,988	244,037	372,685	342,065	701,065	1,174,419	1,848,360	2,086,839	663,740	—
Consumption Taxes Payable	17,619	46,082	39,014	53,825	95,459	123,675	228,573	232,919	124,229	—
Advances Received	8,232	4,715	11,875	26,880	239,138	364,860	327,737	577,837	451,322	266,257
Deposits	2,594	8,094	10,206	14,056	34,299	42,831	79,122	129,124	128,455	54,105
Reserve for Bonuses	—	—	—	—	—	100,350	147,992	345,539	234,892	78,969
Reserve for Director Bonuses	—	—	—	—	—	—	8,800	6,300	—	—
Other	—	—	190	710	2,266	1,029	28,841	9,124	22,737	1,104
Total Current Liabilities	240,242	462,394	739,342	828,143	1,950,604	2,963,360	4,518,254	5,160,631	2,956,853	1,086,282
Long-term Liabilities										
Lease Liabilities	—	—	—	—	—	—	—	—	—	15,191
Total Long-term Liabilities	—	—	—	—	—	—	—	—	—	15,191
Total Liabilities	240,242	462,394	739,342	828,143	1,950,604	2,963,360	4,518,254	5,160,631	2,956,853	1,101,473
(Capital)										
Capital	322,500	747,500	747,500	770,729	783,002	806,379	—	—	—	—
Capital surplus reserves	262,500	965,500	965,500	—	—	—	—	—	—	—
Capital reserves										
Capital surplus reserves	—	—	—	988,729	1,249,573	1,272,950	—	—	—	—
Total capital reserves	—	—	—	988,729	1,249,573	1,272,950	—	—	—	—
Other surplus funds										
Unappropriated earnings	132,591	596,876	1,260,132	—	—	—	—	—	—	—
Total other surplus funds	132,591	596,876	1,260,132	—	—	—	—	—	—	—
Retained earnings										
Unappropriated reserves										
Contingent reserves	—	—	—	—	—	2,000,000	—	—	—	—
Unappropriated earnings	—	—	—	2,103,907	3,061,894	2,906,867	—	—	—	—
Total retained earnings	—	—	—	2,103,907	3,061,894	4,906,867	—	—	—	—
Net unrealized gains on securities and other holdings	—	—	—	18,976	22,296	—	—	—	—	—
Total shareholder's equity	717,591	2,309,876	2,973,132	3,882,341	5,116,767	6,986,197	—	—	—	—
Total liabilities and shareholders' equity	957,833	2,772,271	3,712,474	4,710,485	7,067,372	9,949,557	—	—	—	—
(Net Assets)										
Owners' Equity										
Paid-In Capital	—	—	—	—	—	—	841,221	932,780	965,246	968,495
Capital Surplus										
Capital Legal Reserve	—	—	—	—	—	—	1,307,790	1,399,348	1,431,811	1,435,060
Total Capital Surplus	—	—	—	—	—	—	1,307,790	1,399,348	1,431,811	1,435,060
Other Retained Earnings										
General Reserve	—	—	—	—	—	—	2,000,000	2,000,000	2,000,000	2,000,000
Retained Earnings Brought Forward	—	—	—	—	—	—	5,459,685	8,878,759	10,973,491	10,455,834
Total Retained Earnings	—	—	—	—	—	—	7,459,685	10,878,759	12,973,491	12,455,834
Treasury Stock	—	—	—	—	—	—	—	—	-1,553,757	-2,038,386
Total Owners' Equity	—	—	—	—	—	—	9,608,697	13,210,889	13,816,792	12,821,003
Valuation and Translation Adjustments										
Valuation Differences on Other Investment Securities	—	—	—	—	—	—	2,393	10,545	-4,066	141,982
Total Valuation and Translation Adjustments	—	—	—	—	—	—	2,393	10,545	-4,066	141,982
Total Net Assets	—	—	—	—	—	—	9,611,090	13,221,434	13,812,725	12,962,986
Total Liabilities and Net Assets	—	—	—	—	—	—	14,129,344	18,382,065	16,769,578	14,064,460

This material is for informational purpose only. You are fully responsible for the final decision to invest in the company. The statements included in these documents that are not historical facts are forward-looking statements which reflect management's current views with respect to certain future events and financial performance of the company. The company makes no guarantee or promise as to the accuracy or completeness of the information provided here and shall not be liable for any errors or delays in the content, or for any actions taken in reliance thereon. The content is subject to change without notice hereon.

Profit and loss statements



Income Statements	2000	2001	2002	2003	2004	2005	2006	2007	2008	2009
Net Sales	620,652	1,876,910	3,107,491	4,372,559	6,980,678	11,491,772	16,919,926	22,686,137	21,329,443	10,209,242
Cost of Sales	10,274	25,378	54,520	204,668	572,105	1,097,051	1,604,439	2,033,507	2,230,907	1,804,517
Gross Income	610,377	1,851,532	3,052,971	4,167,890	6,408,573	10,394,720	15,315,487	20,652,629	19,098,536	8,404,725
Sales, General and Administrative Expenses										
Advertising & Promotions Expense	137,048	428,244	707,295	1,107,395	2,056,354	3,304,991	4,551,332	6,062,752	5,586,559	1,934,944
Executive Salaries	10,200	26,700	47,320	47,320	49,980	55,905	57,000	57,000	80,316	59,600
Employee Salaries	64,849	170,599	273,090	435,120	877,946	1,382,170	2,179,810	2,904,748	3,283,736	2,502,551
Bonuses	28,206	49,136	65,060	67,531	152,701	210,941	538,155	668,914	690,552	99,265
Reserve for Bonuses	—	—	—	—	—	85,488	126,311	298,551	204,552	78,005
役員賞与引当金繰入額	—	—	—	—	—	—	8,800	6,300	—	—
Legal Fringe Benefits	7,796	24,990	38,563	65,936	117,722	210,989	357,882	443,187	524,736	343,600
Commission Expense	26,235	47,634	92,911	63,683	114,206	175,893	264,005	308,241	393,066	304,863
Rent	12,271	31,754	50,729	135,187	224,950	344,714	477,882	837,165	907,683	781,311
Commissions on Payments	—	—	197,749	203,905	115,034	88,020	100,385	126,843	121,026	79,884
Depreciation Expense	11,523	23,365	47,184	32,026	32,199	51,473	100,178	163,078	163,888	180,096
Reserve for Bad Debt	3,028	4,831	5,122	2,967	3,909	6,032	17,741	19,514	50,908	15,900
Other	54,930	110,582	222,540	256,984	418,217	686,379	930,524	1,191,815	1,148,238	764,963
Operating Income	254,467	933,691	1,305,402	1,749,830	2,245,350	3,791,720	5,605,476	7,564,516	5,943,271	1,259,737
Non-Operating Income										
Interest Received	20	657	1,171	1,179	1,091	7,880	14,218	27,916	36,307	23,486
Dividends Received	—	—	—	—	800	—	—	—	—	18,500
Commissions Received	—	—	—	4,021	6,758	3,593	959	2,255	1,151	95
Foreign exchange gains	—	—	—	—	—	18,537	4,288	—	—	—
Miscellaneous Income	27	64	1,254	684	1,864	4,840	11,376	11,250	15,034	17,284
Non-Operating Expenses										
New share issuance fees	2,544	14,366	3,646	2,120	1,179	—	—	—	—	—
Fixed asset liquidation loss	2,700	390	500	—	—	450	—	—	—	—
Interest Expense	—	—	—	—	—	—	—	—	—	95
The insurance cancellation of a contract is disadvantageous	—	—	20,387	—	—	—	—	—	—	—
Foreign Exchange Loss	—	—	—	—	—	—	—	10,527	14,324	1,969
Loss on LLP Investment	—	—	—	—	—	—	14,015	13,831	53,689	73,051
Contribution for Hiring of Elderly and Handicapped	—	—	—	—	—	—	7,600	7,800	8,750	—
Loss on Termination of Lease Agreement	—	—	—	—	—	—	—	—	—	27,088
Miscellaneous Expense	—	1,541	—	—	12	—	7,647	707	12,719	3,991
Ordinary Income	249,271	898,094	1,283,294	1,754,294	2,254,671	3,826,122	5,607,055	7,573,073	5,906,282	1,212,905
Extraordinary Income										
A loan loss reserve return case	—	—	—	—	—	—	—	—	—	—
Fixed assets sale gain	—	—	—	—	—	—	—	6	—	—
Refund from Cancellation of Insurance	—	—	—	—	—	—	—	—	—	84,807
Gain on Transfer of Business	—	—	—	—	—	—	—	—	6,281	—
Securities liquidation profit	—	—	—	—	—	81,308	—	—	—	—
Extraordinary Loss										
Loss on Sale of Fixed Assets	—	—	—	—	—	—	—	17,117	8	578
Loss on Disposal of Fixed Assets	—	—	—	10,348	—	66,171	11,404	50,105	21,619	124,206
Office Relocation Expense	—	—	—	—	—	29,976	4,633	16,727	6,838	85,095
Costs related to Lawsuit	—	—	—	—	—	—	—	11,954	—	11,971
Valuation Loss on Stock in Affiliates	—	—	—	—	—	—	—	—	527,154	29,999
Valuation Loss on Investment Securities	—	—	—	—	—	—	—	49,999	19,979	24,263
Extraordinary Retirement Payments	—	—	—	—	—	—	—	—	—	236,184
Decrease loss	—	—	—	—	—	—	—	99,959	—	—
Income before Taxes and Adjustments	249,271	898,094	1,283,294	1,743,945	2,254,671	3,811,282	5,591,017	7,327,216	5,336,961	785,413
Corporate, Resident and Enterprise Taxes	130,988	445,212	641,023	714,687	1,096,015	1,685,000	2,655,487	3,366,205	2,322,818	94,514
Corporate Tax Adjustment	-14,308	-11,402	-20,984	-9,516	-94,618	-77,053	-170,414	-207,680	-76,708	231,369
Total Corporate and Other Taxes	132,591	464,285	663,255	1,038,775	1,253,275	2,203,336	3,105,944	4,168,691	3,090,851	459,529
Unappropriated retained earnings/carry forward from previous term	—	132,591	596,876	1,065,132	1,808,619	703,531	—	—	—	—
Unappropriated earnings	132,591	596,876	1,260,132	2,103,907	3,061,894	2,906,867	—	—	—	—

(Thousand of Yen)

This material is for informational purpose only. You are fully responsible for the final decision to invest in the company. The statements included in these documents that are not historical facts are forward-looking statements which reflect management's current views with respect to certain future events and financial performance of the company. The company makes no guarantee or promise as to the accuracy or completeness of the information provided here and shall not be liable for any errors or delays in the content, or for any actions taken in reliance thereon. The content is subject to change without notice hereon.

■ Cash flow statements



(Thousand of Yen)

Statements of Cash Flows	2000	2001	2002	2003	2004	2005	2006	2007	2008	2009
Cash Flows from Operating Activities										
Income before Taxes and Adjustments	249,271	898,094	1,283,294	1,743,945	2,254,671	3,811,282	5,591,017	7,327,216	5,336,961	785,413
Depreciation Expense	11,523	23,365	47,184	97,451	223,585	381,625	481,635	653,802	794,754	868,738
Decrease loss	—	—	—	—	—	—	—	99,959	—	—
Change in Reserve for Bad Debt (Decrease: —)	1,086	4,277	1,762	7	3,459	6,032	17,146	12,755	40,757	-47,856
Change in Reserve for Bonuses (Decrease: —)	—	—	—	—	—	100,350	47,641	197,547	-110,647	-155,922
Change in Reserve for Director Bonuses (Decrease: —)	—	—	—	—	—	—	8,800	-2,500	-6,300	—
Interest Received	-20	-657	-1,171	-1,179	-1,091	-7,880	-14,218	-27,916	-36,307	-23,486
Dividends Received	—	—	—	—	-800	—	—	—	—	-18,500
Foreign Exchange Loss/Gain (Gain: —)	—	—	—	—	—	-18,537	-4,288	10,527	14,324	1,969
Loss/Gain on LLP Investment (Gain: —)	—	—	—	—	—	—	14,015	13,831	53,689	73,051
Investment securities sale gain	—	—	—	—	—	-81,308	—	—	—	—
Valuation Loss on Investment Securities (Gain: —)	—	—	—	—	—	—	—	49,999	19,979	24,263
Valuation Loss on Stock in Affiliates	—	—	—	—	—	—	—	—	527,154	29,999
Gain on Sale of Fixed Assets	—	—	—	—	—	—	—	-6	—	—
Loss on Sale of Fixed Assets	—	—	—	—	—	—	—	17,117	8	578
Loss on Disposal of Fixed Assets	2,700	390	500	10,348	—	66,621	11,404	50,105	21,619	124,206
The insurance cancellation of a contract is disadvantageous	—	—	20,387	—	—	—	—	—	—	—
Gain on Transfer of Business	—	—	—	—	—	—	—	—	-6,281	—
Extraordinary Retirement Payments	—	—	—	—	—	—	—	—	—	236,184
Insurance refund	—	—	—	—	—	—	—	—	—	-84,807
Change in Accounts Receivable (Increase: —)	-141,641	-134,380	-194,938	-55,935	-337,946	-478,945	-808,900	-360,223	621,533	1,050,940
Change in Accounts Payable (Decrease: —)	761	-173	5,942	-3,622	-2,126	50,187	17,249	-7,415	58,458	-92,796
Change in Payments Due (Decrease: —)	62,099	71,801	47,872	-16	297,486	317,669	305,895	141,705	-467,161	-518,382
Change in Other Current Assets (Increase: —)	-3,785	-5,974	-51,872	43,945	-14,927	-390,420	11,237	-7,758	-70,355	-120,470
Change in Other Current Liabilities (Decrease: —)	39,930	36,592	14,979	69,351	322,340	103,511	385,837	207,596	-223,339	-531,269
Change in Other Fixed Assets (Increase: —)	—	—	—	—	—	—	—	38,596	69,107	53,054
Subtotal	221,924	893,335	1,173,939	1,904,296	2,744,652	3,860,190	6,064,474	8,414,939	6,637,956	1,654,908
Interest and Dividends Received	20	657	1,171	1,179	1,891	5,490	8,267	22,718	32,434	45,542
Corporate Taxes Paid	—	-332,162	-512,374	-745,308	-737,014	-1,244,497	-1,996,023	-3,143,891	-3,733,585	-1,769,552
Extraordinary Retirement Payments	—	—	—	—	—	—	—	—	—	-236,184
Cash Flows from Operating Activities	221,944	561,830	662,736	1,160,167	2,009,528	2,621,183	4,076,717	5,293,767	2,936,805	-305,285

This material is for informational purpose only. You are fully responsible for the final decision to invest in the company. The statements included in these documents that are not historical facts are forward-looking statements which reflect management's current views with respect to certain future events and financial performance of the company. The company makes no guarantee or promise as to the accuracy or completeness of the information provided here and shall not be liable for any errors or delays in the content, or for any actions taken in reliance thereon. The content is subject to change without notice hereon.

Cash flow statement



(Thousand of Yen)

	2000	2001	2002	2003	2004	2005	2006	2007	2008	2009
Cash Flows from Investing Activities										
The expenditure by the deposit of the fixed deposit	—	—	-150,000	—	—	-215,760	-1,000,000	-1,200,000	—	—
Cash from Redemption of Time Deposits	—	—	—	—	—	—	—	—	228,300	1,000,000
Cash used for Purchase of Investment Securities	—	—	—	-44,800	—	-25,000	-325,000	-469,950	-30,000	-387,500
Cash Provided from Sale of Investment Securities	—	—	—	—	—	126,108	—	29,000	37,000	8,018
Cash used for Purchase of Stock in Affiliates	—	—	—	—	—	—	-571,594	—	-30,000	-520,968
Cash used for Purchase of Tangible Fixed Assets	-9,673	-10,519	-32,546	-145,688	-91,371	-713,803	-152,257	-362,879	-323,464	-123,323
Cash Provided from Sale of Tangible Fixed Assets	—	—	—	—	—	—	—	15,300	8	20
Cash used for Purchase of Intangible Fixed Assets	-17,176	-26,645	-51,878	-39,476	-183,174	-341,026	-658,367	-833,617	-620,409	-561,010
Cash used for Deposit Guarantees	-21,443	-27,419	-11,174	-9,654	-44,464	-246,436	-283,177	-90,819	-39,674	-30,651
Cash Provided from Return of Deposit and Guarantees	—	—	—	—	303	114,476	10,689	22,201	71	404,296
Cash used for Accumulation of Insurance Reserve	—	-55,526	-249,276	-24,979	-162,063	-8,647	-8,921	-8,666	-8,666	-1,391
Cash Provided from Cancellation of Insurance Reserve	—	—	66,411	—	—	—	691	424	—	525,198
Cash used for Loan Extensions	—	—	—	—	—	-4,099	—	-1,020	-3,190	—
Cash Provided from Loan Repayments	—	—	—	—	—	—	1,065	978	1,481	15,906
Cash Flows from Investing Activities	-48,293	-120,111	-428,464	-264,599	-480,770	-1,314,189	-2,986,871	-2,899,046	-788,544	328,593
Cash Flows from Financing Activities										
Cash Provided by Issuance of Stock	585,000	1,128,000	—	46,458	24,545	46,754	69,682	183,117	64,928	6,497
Cash used for Purchase of Treasury Stock	—	—	—	—	—	—	—	—	-1,553,757	-484,629
Cash used for Dividend Payments	—	—	—	-194,368	-294,240	-357,738	-551,495	-747,178	-994,238	-974,085
Cash used for Repayment of Lease Obligations	—	—	—	—	—	—	—	—	—	-13,847
Cash Flows from Financing Activities	585,000	1,128,000	—	-147,909	-269,694	-310,984	-481,813	-564,060	-2,483,066	-1,466,064
Translation Adjustment for Cash and Cash Equivalents	—	—	—	—	—	157	208	-607	-11,814	1
Net Increase in Cash and Cash Equivalents (Decrease: —)	758,651	1,569,719	234,271	747,658	1,259,063	996,167	608,241	1,830,052	-346,620	-1,442,755
Cash and Cash Equivalents, Beginning of Period	—	758,651	2,328,370	2,562,642	3,310,300	4,569,364	5,565,531	6,173,772	8,003,825	7,657,204
Cash and Cash Equivalents, End of Period	758,651	2,328,370	2,562,642	3,310,300	4,569,364	5,565,531	6,173,772	8,003,825	7,657,204	6,214,449

This material is for informational purpose only. You are fully responsible for the final decision to invest in the company. The statements included in these documents that are not historical facts are forward-looking statements which reflect management's current views with respect to certain future events and financial performance of the company. The company makes no guarantee or promise as to the accuracy or completeness of the information provided here and shall not be liable for any errors or delays in the content, or for any actions taken in reliance thereon. The content is subject to change without notice hereon.