

硬體安裝指南

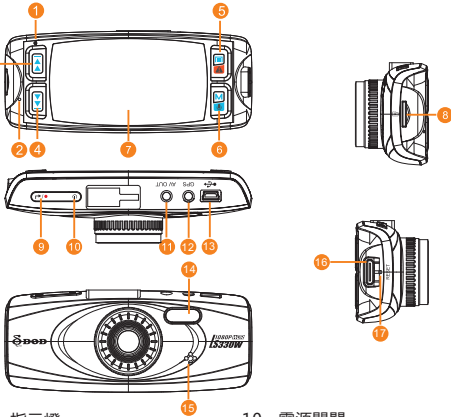
感謝您選購本公司產品，請詳閱此指南手冊，並特別注意相關提醒，正常操作主機！

本公司產品使用最好的電子原件，生產全球最好的優質畫面，提供給客戶最好的產品。

錄影中注意事項

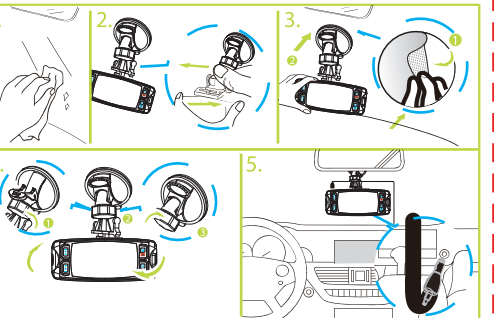
- 1、在錄影中，汽車前方擋風玻璃無隔熱紙或貼膜，錄影效果則最佳。
- 2、車前擋風玻璃，內外請保持清潔，避免影響錄影畫面品質。
- 3、雨天錄影時，如發現雨刷刷不乾淨玻璃，請及時更換雨刷，避免造成雨天錄影品質不佳。
- 4、天晴錄影時，錄影畫面品質最佳，但注意如在逆光環境下錄影，畫面則較暗，此為正常現象。
- 5、為了呈現更好的視頻及音頻效果，建議使用以下播放軟體播放：暴風影音、Windows Media Player、Quick Time Player。
- 6、本機經過耐高低溫測試；但為了保障更長的壽命，夏日車內高溫，如本機無需工作，建議移到陰涼處。

產品結構



- | | |
|----------------|---------------|
| 1、指示燈 | 10、電源開關 |
| 2、麥克風 | 11、AV輸出接口 |
| 3、方向上 | 12、GPS IN |
| 4、方向下 | 13、USB/車充電源插孔 |
| 5、選單/SOS緊急檔案鎖 | 14、LED燈 |
| 6、模式/麥克風開關(長按) | 15、喇叭 |
| 7、2.7寸TFT顯示螢幕 | 16、HDM輸出接口 |
| 8、Mirco-SD卡插槽 | 17、重置鍵 |
| 9、錄影/拍照/確認 | |

安裝與固定



- 1、請先將記憶卡依指定方向插入主機，並使用支架將主機固定於車內。
- 2、使用支架時，請慎選擺放位置。切勿將主機放在會阻礙開車視線或影響安全氣囊正常運作的位置。
- 3、如果汽車擋風玻璃內外有油漬、指紋或其他髒汙，請先擦拭乾淨後再安裝。

開啟與關閉主機電源

請插入車用電源並發動汽車，主機會立即開機。
當汽車熄火或者移除車用電源，主機10秒後自動關機。

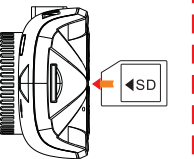
注意事項

- 1、當車輛熄火後點煙器仍供電的使用者，請在離開車子時務必將點煙器插頭拔起。
- 2、請使用8GB Class 6以上規格的Micor SD卡。
- 3、檔案被保護鎖定後，此檔案在錄影中不會被刪除，機器最多保護鎖定10筆，超過10筆會自動將最舊的保護檔轉成一般檔，持續錄影仍會被刪除。
- 4、影片中浮水印時速係為GPS接收後運算所得，會有些許時間落差，速度顯示請以電腦軟體為主。

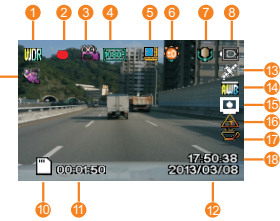
軟體操作指南

開機流程

- 1、插入記憶卡
- 2、將車用電源分別插入汽車點煙頭與主機
- 3、發動汽車
- 4、主機開機，系統將會自動開始錄影



錄影畫面



待機畫面



- | | |
|-------------|------------|
| 1、WDR功能全時開啟 | 10、記憶卡圖示 |
| 2、錄影圖示 | 11、錄影時間 |
| 3、錄影模式 | 12、日期顯示 |
| 4、動畫尺寸 | 13、GPS圖示 |
| 5、分段攝影3分鐘 | 14、白平衡 |
| 6、攝影亮度調整 | 15、待機速度顯示 |
| 7、麥克風 | 16、GPS超速警示 |
| 8、連接電源充電 | 17、疲勞駕駛警示 |
| 9、移動攝影 | 18、當前時間 |

錄影設定

停止錄影後按一下MENU鍵進入錄影設定。

全時寬動態：全時開啟。

動畫尺寸：設定動畫尺寸大小。

攝影亮度調整：設定攝影亮度大小。

白平衡：針對環境光源進行調整。

錄音：開啟或關閉錄音功能。

日期水印：開啟或關閉日期記錄功能。

分段攝影：設定分段攝影時間或關閉分段攝影功能。

重力感應：設定G-Sensor觸發檔案保護的靈敏度。

移動攝影：開啟或關閉移動攝影功能。

車牌顯示：可在視頻上顯示車牌號碼。

★ **疲勞駕駛警示：**開啟或關閉疲勞駕駛警示功能。

★ **GPS軌跡：**開啟或關閉GPS軌跡功能。

★ **待機速度顯示：**設定開啟或關閉待機速度顯示功能。

★ **GPS超速警示：**開啟或關閉超速警示功能。

世界時區：請依格林威治標準時間，設定您所在地區的時間。

密碼設置：設定系統操作密碼並保護文件安全。

★ **速度單位：**設定速度單位功能。

影像旋轉：設定開啟或關閉影像旋轉功能。

★ **功能僅使用於有加購DOD GPS天線的機器**

系統設置

停止錄影後按二下MENU鍵進入系統設定。

格式化：將記憶卡進行格式化，格式化前請先備份資料

語言選擇：支援多國語言，可依您的喜好調整。

日期/時間：更改系統時間。

頻率：調整使用環境的光源頻率。

照明燈：開啟和關閉照明燈功能。

按鍵音：開啟或關閉按鍵音功能。

屏幕保護：設定螢幕自動關閉時間，或永遠開啟。

TV輸出：影像輸出時，可調整NTSC與PAL。

★ **時速浮水印：**開啟或關閉時速浮水印。

系統版本：查看系統版本號。

恢復預設值：將所有設定回復至原廠預設狀態。

回放模式

播放流程

- 1、停止錄影後按下MODE鍵進入影片播放模式。
- 2、按上下鍵選擇到想要播放的影片。
- 3、按下確認鍵開始播放影片。
- 4、再一次按下確認鍵暫停播放影片。

影片刪除

- 1、停止錄影後按下MODE鍵進入影片播放模式。
- 2、按上下鍵選擇到想要刪除的影片。
- 3、按下MENU鍵進入選單進行影片刪除或全部刪除。

電腦播放

- 播放1080P 30fps影像電腦規格建議：
- 1、intel Core 2 Duo 2.0GHz 以上CPU
 - 2、2G以上DDRII記憶體
 - 3、支援DirectX 10以上規格之顯示卡

Hardware Installation Guide

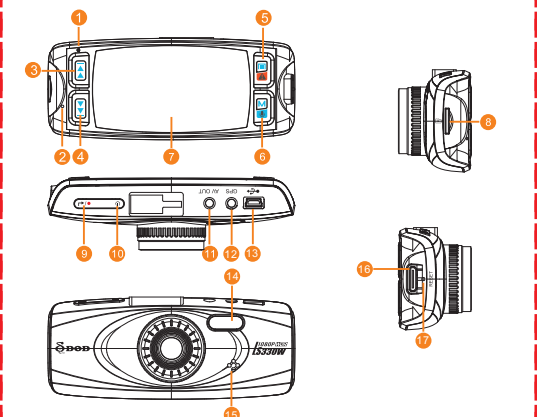
Thank you for purchasing Our company product, please following the instruction to use the device correctly.

Our company products are made of top materials to provide the best quality product with the best image quality to all customers.

Recording notes

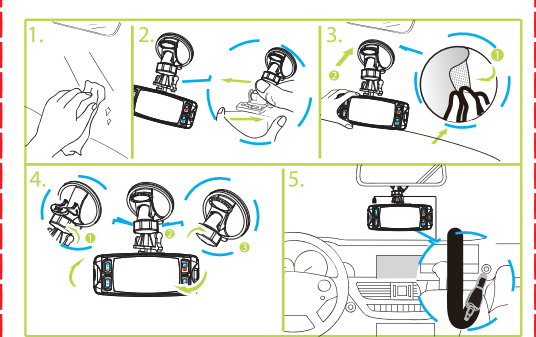
- 1、Recording in a car without film on windshield can ensure the best image recorded.
- 2、Please keep the windshield clean to prevent bad influence on image quality.
- 3、If windshield wiper can't clean the windshield, please replace it with a new one, or the image quality in the rainy day will be influenced.
- 4、Image quality will be better while recording in a sunny day, but please note in backlight position the image will be darker, it's the normal reaction while image sensor face the light straightly.
- 5、In order to present a better video and audio quality, we suggest using the following player software: Storm video, Windows Media Player, QuickTime Player.
- 6、After the machine high and low temperature testing; But in order to ensure a longer life, summer heat inside the car, such as the machine without work, the proposed move to the shade.

Product Structure



- | | |
|----------------------------------|--|
| 1、Indicator | 10、Power switch |
| 2、Microphone | 11、AV Output Port |
| 3、UP | 12、GPS IN |
| 4、DOWN | 13、USB/Vehicle Charger Power Supply Port |
| 5、MENU/SOS Emergency File Lock | 14、LED lamp |
| 6、MODE/Mute Mode(Long press) | 15、Speaker |
| 7、2.7-Inch TFT Display Screen | 16、HDMI Output Jack |
| 8、Micro-SD Card Slot | 17、Reset key |
| 9、Video Recording/Camera/Confirm | |

Installation and Fixation



- 1、Please insert the memory card into the SD Card Slot with the specified direction, and then use the bracket to fix the device inside the car.
- 2、When using the bracket, please choose the position carefully. Do not place the device in the position that blocks the driver's sight or affects the normal work of the airbags.
- 3、If there is any splotch, fingerprints or other kinds of smudginess inside or outside on the windshield, please wipe clean it before proceeding the installation.

Power On/Off

Please connect the vehicle cigarette lighter and start the engine, the device will be switched on immediately. When car engine stooped or car power disconnected, the device will shutdown in 10 seconds automatically.

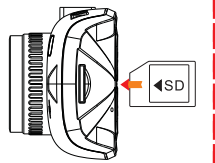
Notes

- 1、For the users whose vehicle cigarette lighter keeps power supplying after the engine stopped, please unplug the car charger before leaving the vehicle.
- 2、Please use 8GB Class 6 or above Micro SD card.
- 3、Once the file be protected, the file will not be deleted by loop recording. The device can protect up to 10 files, if the 11th file be protected, the oldest protected file will be turned to unprotected file which will be deleted by looping recording.
- 4、The speed stamp in the video is the result of GPS signal computing, and will have slight deviation, please take the speed information on DOD Player as priority.

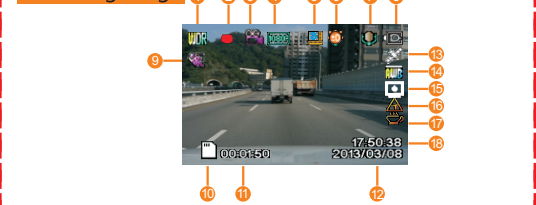
Software Operation

Switch On

- 1、Insert the memory card
- 2、Connect the car charger into the vehicle cigarette lighter and the device.
- 3、Start the vehicle.
- 4、The device be turned on, and start recording automatically.



Recording image



Standby Image



- | | |
|--------------------------------------|---------------------------|
| 1、WDR works all time | 10、Memory Card icon |
| 2、Recording image | 11、Recording time |
| 3、Recording mode | 12、Date |
| 4、Resolution | 13、GPS |
| 5、Loop recording in 3 minutes length | 14、White Balance |
| 6、Exposure | 15、Speed display |
| 7、Microphone | 16、GPS speeding warning |
| 8、Power connected | 17、Driver fatigue warning |
| 9、Motion Detection | 18、Time |

Recording Settings

After stopped recording, press MENU to enter the recording settings.

WDR : Toggle on the WDR function.

Resolution : Set the recording resolution.

Exposure : Set the exposure value.

White Balance: Adjust for ambient light.

Record Audio : Toggle on or off the sound recording function.

Date Stamp : Toggle on or off the data stamp function.

Loop recording : Set the video length in recording cycle mode, or toggle off record cycle function.

Gsensor : Set the sensitivity level of the G-sensor file protection.

Motion Detection : Toggle on or off the motion detection recording function.

Plate stamp: can display the registration number on the video.

★ **Driver fatigue warning**: Switch on/off Driver fatigue warning function.

★ **GPS logger**: Toggle on or off the GPS logger function.

★ **Speed Display**: Set the length of time before the full screen speed display activating.

★ **GPS speeding warning**: Switch on/off GPS speeding warning function.

Time Zone: Please set your local time zone in accordance with the reenwich Mean Time.

Password settings: Set the system operation and to protect the password file security.

★ **Speed Scale**: To toggle between KM/H and MPH.

Image rotation: Set the image rotation feature on or off.

★ **Only works with DOD GPS antenna(optional accessory)**

System Settings

After stopped recording, press MENU twice to enter the system setup.

Format : Format the memory card; please backup your data before formatting.

Language : Support multiple languages; you can choose the language according to your preferences.

Date/Time : Set the system time.

Frequency : Adjust the light frequency of use of the environment.

IR LED : turn on and off light feature

Beep Sound : Switch on or off the system beep indicator

Screen Saver : Set the screen automatic off time, or set it as always on.

TV Mode : You can toggle between NTSC and PAL when in video output mode.

★ **Speed Stamp** : Toggle on/off speed stamp.

Version : Check the system version number.

Default Setting : Reset all the settings to the default state.

Video Playback

Video-Play Operation

- 1、After stopped recording, press MODE to enter the video-play mode.
- 2、Press UP or Down to select the desired video to play.
- 3、Press CONFIRM to start playing video.
- 4、Press CONFIRM again to pause the video.

Delete Video

- 1、After stopped recording, press MODE to enter the video-play mode.
- 2、Press UP or Down to select the desired video to delete.
- 3、Press MENU, enter the menu to delete the video or delete all.

Play on Computer

Recommended PC requirements for 1080P 30fps video playing:

- 1、intel Core 2 Duo 2.0GHz or higher CPU
- 2、2G or above DDRII RAM
- 3、Graphic card supports DirectX 10 or above